



November 2017

# Product Price List



[www.sterlingpumps.com.au](http://www.sterlingpumps.com.au)

Sterling Pumps are an Australian based pump and motor manufacturer based in Pakenham, just outside Melbourne. As a complete solution provider, we offer a catalogue of standard products for common pumping uses and the capability to design, manufacture and test pumps, motor and fluid systems to specific individual requirements.

We design, cast, machine, fabricate, manufacture and test a diverse range of pumps including our vertical line shaft turbines, cast submersible pumps, fabricated submersible stainless steel pumps, submersible motors, horizontal split case pumps, open drain and non clog sewage and dewatering pumps, horizontal multistage pumps and industrial end suction pumps. We design and manufacture pumping packages including certified firefighting systems and API610 VS1 and VS6 pumps and pumping systems.



Sterling Pump products are installed around Australia and internationally in agricultural, mining, municipal, civil, industrial and aviation sectors as well as processing and emergency operations by some of the largest oil and gas operations in the world.

Sterling Pumps is a member of the global WPIL International group, which is comprised of Aturia Group (Italy), WPIL India Ltd, Rutschi Pompes (France), Rutschi Fluid (Switzerland), Mathers Ltd (United Kingdom), APE Pumps (South Africa) and ourselves. The purpose of this group is to share designs, patents and information with the aim of continuing as world leaders in design and manufacturing of pumps and pumping systems throughout the many industries that we support.

### Vertical Line Shaft Turbines

- 4" to 24" in stock Melbourne (VT series)
- Sizes up to 90" available
- Electric driven or diesel engine driven
- Constructions in;
  - Cast Iron, Zinc Free Bronze, Stainless Steel, Duplex SS, Super Duplex SS
  - Carbon Steel, Nickel Aluminium Bronze, Zeron 100
- Flanged or threaded column in mild steel or stainless steel
- Water/fluid lube column or oil lube column
- Axial Flow and Mixed Flow turbines available



### Submersible Bore Pumps

- 4" to 12" in stock Melbourne (TS series)
- Cast pumps available in:
  - Cast Iron, Zinc Free Bronze, Stainless Steel, Duplex SS, Super Duplex
  - Carbon Steel, Nickel Aluminium Bronze, Zeron 100
- Fabricated pumps, 4" 6" 8" and 10" (W series)
  - available in 304 and 316SS(N) up to 280 m<sup>3</sup>/h



### Submersible Motors

- 1.1 kW to 185 kW, 2p, 50 Hz
- 4", 6", 8", 10" in stock Melbourne, Standard, 304 and 316SS constructions
- 12" to 20" available
- 4 pole motors
- Special construction motors available in;
  - Duplex SS, Super Duplex, Nickel Alum Bronze, Copper-Nickel & Zeron 100
- 60 Hertz motors
- 240v, 415V, 1000V, 3300V and 6600V



### Sewage and Dewatering Pumps

- Pumps up to 20,000 m³/h, heads; to 100 metres, power to 500kW (G-N-NC-MS series)
- Heavy Duty cast iron industrial sewage and dewatering
- Non Clog pumps
- Guide rails options compatible with industry standards
- Mixed Flow solid handling Pumps (MN series)



### Horizontal Multistage Pumps

- Cast iron construction
  - flows up to 850 m³/h, heads up to 500 metres, power up to 560kW (TK-TKB-TKV series)
- 316SS optional construction
- 40 and 63 bar working pressures
- Electric driven or Diesel motor driven
- Horizontal and vertical orientation models
- Multiple porting options



### Split Case Pumps

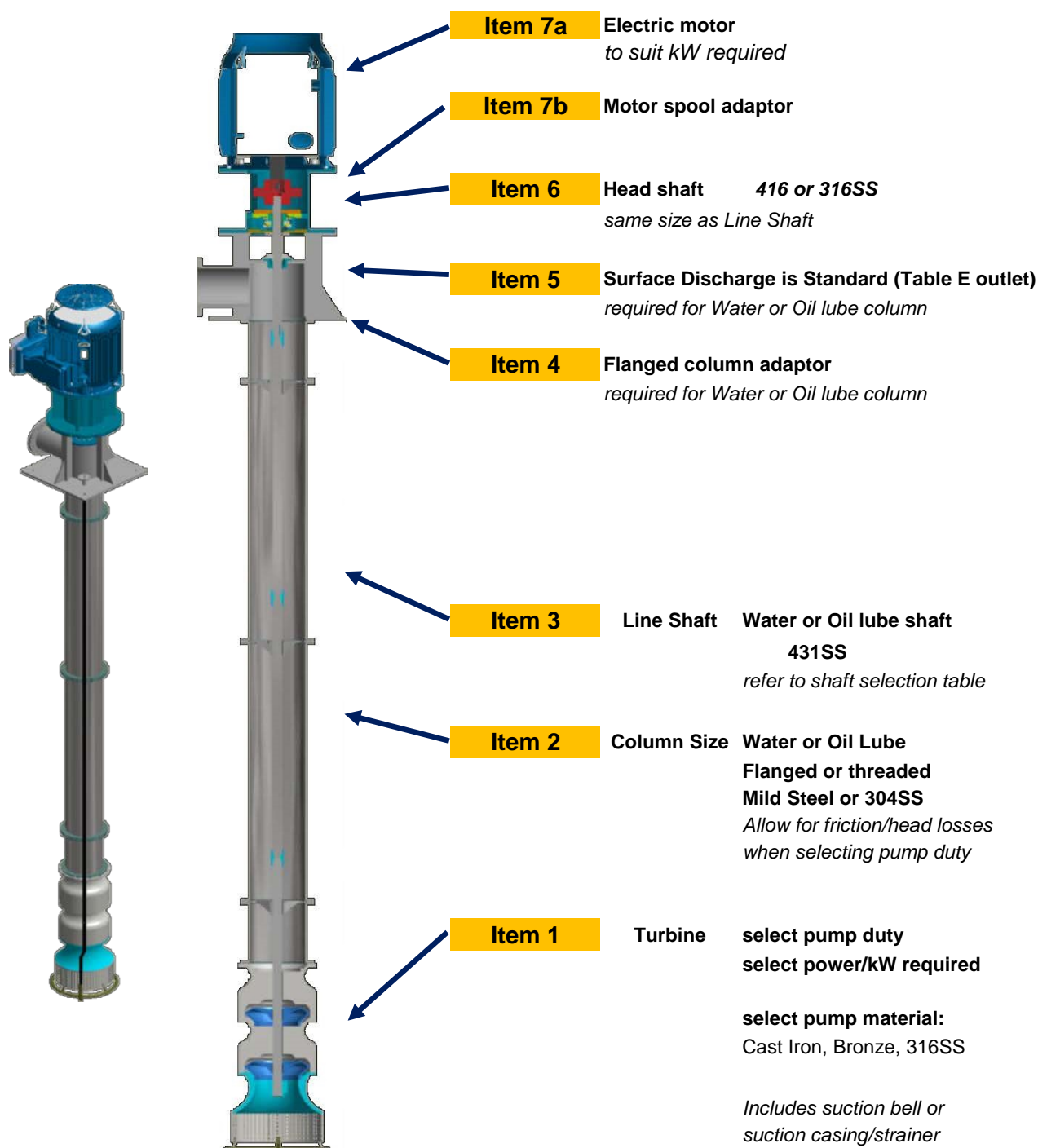
- Cast iron and stainless steel constructions (U-LN-LR series)
- Flows up to 10,000 m³/h, head up to 200 metres



**[www.sterlingpumps.com.au](http://www.sterlingpumps.com.au)**



## Line Shaft Turbine - Electric motor



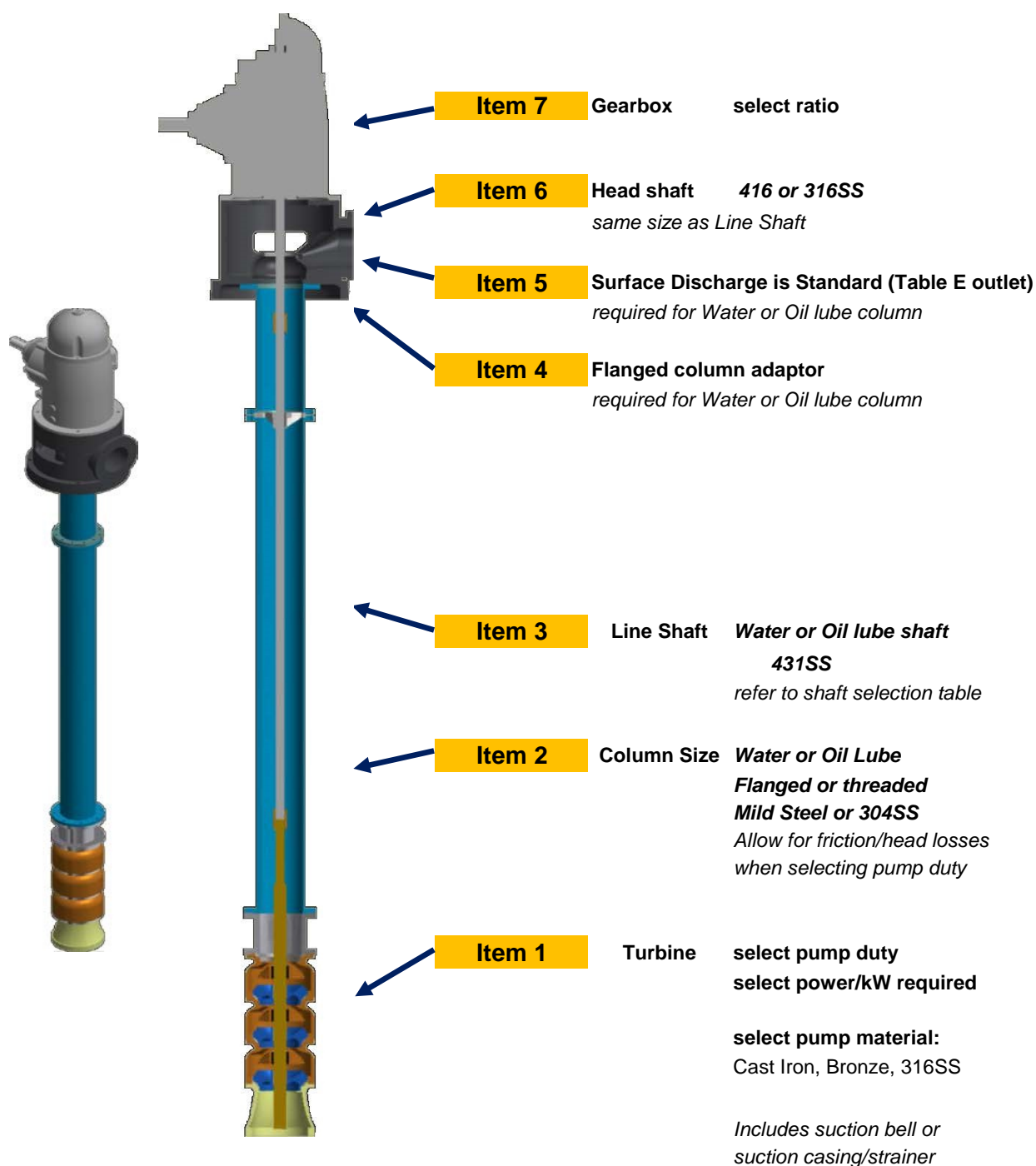
### Notes:

Oil column is recommended for pumped liquid containing suspended particles  
For speeds over 2,200 rpm, 1.5 metre bearing centres are recommended





## Line Shaft Turbine - Gearbox/Engine



### Notes:

Oil column is recommended for pumped liquid containing suspended particles  
For speeds over 2,200 rpm, 1.5 metre bearing centres are recommended



## VT series - 5" Line Shaft Turbines



Stages	Cast Iron		Bronze ZF		316SS	
	Water Lube	Oil Lube	Water Lube	Oil Lube	Water Lube	Oil Lube

### VT-5AA 125mm bowl diameter

1	\$1,688	\$1,968	\$3,760	\$4,040	\$4,040	\$4,320
2	\$2,528	\$2,808	\$5,960	\$6,240	\$6,360	\$6,640
3	\$3,368	\$3,648	\$8,160	\$8,440	\$8,680	\$8,960
4	\$4,208	\$4,488	\$10,360	\$10,640	\$11,000	\$11,280
5	\$5,048	\$5,328	\$12,560	\$12,840	\$13,320	\$13,600
6	\$5,888	\$6,168	\$14,760	\$15,040	\$15,640	\$15,920
7	\$6,728	\$7,008	\$16,960	\$17,240	\$17,960	\$18,240
8	\$7,568	\$7,848	\$19,160	\$19,440	\$20,280	\$20,560
9	\$8,408	\$8,688	\$21,360	\$21,640	\$22,600	\$22,880
10	\$9,248	\$9,528	\$23,560	\$23,840	\$24,920	\$25,200
11	\$10,088	\$10,368	\$25,760	\$26,040	\$27,240	\$27,520

Stages	Cast Iron		Bronze ZF		316SS	
	Water Lube	Oil Lube	Water Lube	Oil Lube	Water Lube	Oil Lube

### VT-5BA 125mm bowl diameter

1	\$1,688	\$1,968	\$3,760	\$4,040	\$4,040	\$4,320
2	\$2,528	\$2,808	\$5,960	\$6,240	\$6,360	\$6,640
3	\$3,368	\$3,648	\$8,160	\$8,440	\$8,680	\$8,960
4	\$4,208	\$4,488	\$10,360	\$10,640	\$11,000	\$11,280
5	\$5,048	\$5,328	\$12,560	\$12,840	\$13,320	\$13,600
6	\$5,888	\$6,168	\$14,760	\$15,040	\$15,640	\$15,920
7	\$6,728	\$7,008	\$16,960	\$17,240	\$17,960	\$18,240
8	\$7,568	\$7,848	\$19,160	\$19,440	\$20,280	\$20,560
9	\$8,408	\$8,688	\$21,360	\$21,640	\$22,600	\$22,880
10	\$9,248	\$9,528	\$23,560	\$23,840	\$24,920	\$25,200
11	\$10,088	\$10,368	\$25,760	\$26,040	\$27,240	\$27,520
12	\$10,928	\$11,208	\$27,960	\$28,240	\$29,560	\$29,840
13	\$11,768	\$12,048	\$30,160	\$30,440	\$31,880	\$32,160
14	\$12,608	\$12,888	\$32,360	\$32,640	\$34,200	\$34,480
15	\$13,448	\$13,728	\$34,560	\$34,840	\$36,520	\$36,800
16	\$14,288	\$14,568	\$36,760	\$37,040	\$38,840	\$39,120
17	\$15,128	\$15,408	\$38,960	\$39,240	\$41,160	\$41,440
18	\$15,968	\$16,248	\$41,160	\$41,440	\$43,480	\$43,760
19	\$16,808	\$17,088	\$43,360	\$43,640	\$45,800	\$46,080
20	\$17,648	\$17,928	\$45,560	\$45,840	\$48,120	\$48,400
21	\$18,488	\$18,768	\$47,760	\$48,040	\$50,440	\$50,720
22	\$19,328	\$19,608	\$49,960	\$50,240	\$52,760	\$53,040

#### Notes:

To order; VT model number, no of stages, column type and material type  
Order separately: Column, discharge head and drive type



## VT series - 6" Line Shaft Turbines

Stages	Cast Iron		Bronze ZF		316SS	
	Water Lube	Oil Lube	Water Lube	Oil Lube	Water Lube	Oil Lube

### VT-6AA 150mm bowl diameter

1	\$1,666	\$1,946	\$3,390	\$3,670	\$4,300	\$4,580
2	\$2,533	\$2,813	\$5,313	\$5,593	\$6,680	\$6,960
3	\$3,400	\$3,680	\$7,236	\$7,516	\$9,060	\$9,340
4	\$4,266	\$4,546	\$9,160	\$9,440	\$11,440	\$11,720
5	\$6,133	\$5,413	\$11,083	\$11,363	\$13,820	\$14,100
6	\$6,000	\$6,280	\$13,006	\$13,286	\$16,200	\$16,480
7	\$6,866	\$7,146	\$14,930	\$15,210	\$18,580	\$18,860
8	\$7,733	\$8,013	\$16,853	\$17,133	\$20,960	\$21,240
9	\$8,600	\$8,880	\$18,776	\$19,056	\$23,340	\$23,620
10	\$9,466	\$9,746	\$20,700	\$20,980	\$25,720	\$26,000
11	\$10,333	\$10,613	\$22,623	\$22,903	\$28,100	\$28,380

### VT-6BA 150mm bowl diameter

1	\$1,666	\$1,946	\$3,390	\$3,670	\$4,300	\$4,580
2	\$2,533	\$2,813	\$5,313	\$5,593	\$6,680	\$6,960
3	\$3,400	\$3,680	\$7,236	\$7,516	\$9,060	\$9,340
4	\$4,266	\$4,546	\$9,160	\$9,440	\$11,440	\$11,720
5	\$5,133	\$5,413	\$11,083	\$11,363	\$13,820	\$14,100
6	\$6,000	\$6,280	\$13,006	\$13,286	\$16,200	\$16,480
7	\$6,866	\$7,146	\$14,930	\$15,210	\$18,580	\$18,860
8	\$7,733	\$8,013	\$16,853	\$17,133	\$20,960	\$21,240
9	\$8,600	\$8,880	\$18,776	\$19,056	\$23,340	\$23,620
10	\$9,466	\$9,746	\$20,700	\$20,980	\$25,720	\$26,000
11	\$10,333	\$10,613	\$22,623	\$22,903	\$28,100	\$28,380

### VT-6CA 140mm bowl diameter

1	\$1,600	\$1,880				
2	\$2,180	\$2,460				
3	\$2,760	\$3,040				
4	\$3,340	\$3,620				
5	\$3,920	\$4,200				
6	\$4,500	\$4,780				
7	\$5,080	\$5,360				
8	\$5,660	\$5,940				
9	\$6,240	\$6,520				
10	\$6,820	\$7,100				

### VT-6DA 140mm bowl diameter

1	\$1,923	\$2,203	\$3,390	\$3,670	\$3,583	\$3,863
2	\$2,940	\$3,220	\$5,313	\$5,593	\$5,566	\$5,846
3	\$3,956	\$4,236	\$7,236	\$7,516	\$7,550	\$7,830
4	\$4,973	\$5,253	\$9,160	\$9,440	\$9,533	\$9,813
5	\$5,990	\$6,270	\$11,083	\$11,363	\$11,516	\$11,796
6	\$7,006	\$7,286	\$13,006	\$13,286	\$13,500	\$13,780
7	\$8,023	\$8,303	\$14,930	\$15,210	\$15,483	\$15,763
8	\$9,040	\$9,320	\$16,853	\$17,133	\$17,466	\$17,746
9	\$10,056	\$10,336	\$18,776	\$19,056	\$19,450	\$19,730
10	\$11,073	\$11,353	\$20,700	\$20,980	\$21,433	\$21,713





## VT series - 7" Line Shaft Turbines



Stages	Cast Iron		Bronze ZF		316SS	
	Water Lube	Oil Lube	Water Lube	Oil Lube	Water Lube	Oil Lube

### VT-7AA 170mm bowl diameter

1	\$2,730	\$3,090	\$5,933	\$6,293	\$5,966	\$6,326
2	\$3,826	\$4,186	\$8,266	\$8,626	\$7,950	\$8,310
3	\$4,923	\$5,283	\$10,600	\$10,960	\$9,933	\$10,293
4	\$6,020	\$6,380	\$12,933	\$13,293	\$11,916	\$12,276
5	\$7,116	\$7,476	\$15,266	\$15,626	\$13,900	\$14,260
6	\$8,213	\$8,573	\$17,600	\$17,960	\$15,883	\$16,243
7	\$9,310	\$9,670	\$19,933	\$20,293	\$17,866	\$18,226
8	\$10,406	\$10,766	\$22,266	\$22,626	\$19,850	\$20,210
9	\$11,503	\$11,863	\$24,600	\$24,960	\$21,833	\$22,193

### VT-7BA 170mm bowl diameter

1	\$3,850	\$4,210	\$6,283	\$6,643	\$6,596	\$6,956
2	\$5,520	\$5,880	\$8,920	\$9,280	\$9,363	\$9,723
3	\$7,190	\$7,550	\$11,556	\$11,916	\$12,130	\$12,490
4	\$8,860	\$9,220	\$14,193	\$14,553	\$14,896	\$15,256
5	\$10,530	\$10,890	\$16,830	\$17,190	\$17,663	\$18,023
6	\$12,200	\$12,560	\$19,466	\$19,826	\$20,430	\$20,790
7	\$13,870	\$14,230	\$22,103	\$22,463	\$23,196	\$23,556
8	\$15,540	\$15,900	\$24,740	\$25,100	\$25,963	\$26,323

### VT-7CA 180mm bowl diameter

1	\$1,923	\$2,203	\$3,390	\$3,670	\$3,583	\$3,863
2	\$2,940	\$3,220	\$5,313	\$5,593	\$5,566	\$5,846
3	\$3,956	\$4,236	\$7,236	\$7,516	\$7,550	\$7,830
4	\$4,973	\$5,253	\$9,160	\$9,440	\$9,533	\$9,813
5	\$5,990	\$6,270	\$11,083	\$11,363	\$11,516	\$11,796
6	\$7,006	\$7,286	\$13,006	\$13,286	\$13,500	\$13,780
7	\$8,023	\$8,303	\$14,930	\$15,210	\$15,483	\$15,763
8	\$9,040	\$9,320	\$16,853	\$17,133	\$17,466	\$17,746
9	\$10,056	\$10,336	\$18,776	\$19,056	\$19,450	\$19,730
10	\$11,073	\$11,353	\$20,700	\$20,980	\$21,433	\$21,713

### VT-7DA 182mm bowl diameter

1	\$3,850	\$4,210	\$6,283	\$6,643	\$6,596	\$6,956
2	\$5,520	\$5,880	\$8,920	\$9,280	\$9,363	\$9,723
3	\$7,190	\$7,550	\$11,556	\$11,916	\$12,130	\$12,490
4	\$8,860	\$9,220	\$14,193	\$14,553	\$14,896	\$15,256
5	\$10,530	\$10,890	\$16,830	\$17,190	\$17,663	\$18,023
6	\$12,200	\$12,560	\$19,466	\$19,826	\$20,430	\$20,790
7	\$13,870	\$14,230	\$22,103	\$22,463	\$23,196	\$23,556
8	\$15,540	\$15,900	\$24,740	\$25,100	\$25,963	\$26,323

#### Notes:

To order; VT model number, no of stages, column type and material type  
Order separately: Column, discharge head and drive type





## VT series - 8" Line Shaft Turbines



Stages	Cast Iron		Bronze ZF		316SS	
	Water Lube	Oil Lube	Water Lube	Oil Lube	Water Lube	Oil Lube

### VT-8AA 190mm bowl diameter

1	\$4,543	\$4,903	\$7,256	\$7,616	\$7,966	\$8,326
2	\$6,630	\$6,990	\$10,506	\$10,866	\$11,540	\$11,900
3	\$8,716	\$9,076	\$13,756	\$14,116	\$15,113	\$15,473
4	\$10,803	\$11,163	\$17,006	\$17,366	\$18,686	\$19,046
5	\$12,890	\$13,250	\$20,256	\$20,616	\$22,260	\$22,620
6	\$14,976	\$15,336	\$23,506	\$23,866	\$25,833	\$26,193
7	\$17,063	\$17,423	\$26,756	\$27,116	\$29,406	\$29,766
8	\$19,150	\$19,510	\$30,006	\$30,366	\$32,980	\$33,340

### VT-8BA 190mm bowl diameter

1	\$4,543	\$4,903	\$7,256	\$7,616	\$7,966	\$8,326
2	\$6,630	\$6,990	\$10,506	\$10,866	\$11,540	\$11,900
3	\$8,716	\$9,076	\$13,756	\$14,116	\$15,113	\$15,473
4	\$10,803	\$11,163	\$17,006	\$17,366	\$18,686	\$19,046
5	\$12,890	\$13,250	\$20,256	\$20,616	\$22,260	\$22,620
6	\$14,976	\$15,336	\$23,506	\$23,866	\$25,833	\$26,193
7	\$17,063	\$17,423	\$26,756	\$27,116	\$29,406	\$29,766
8	\$19,150	\$19,510	\$30,006	\$30,366	\$32,980	\$33,340

### VT-8CA 184mm bowl diameter

1	\$4,000	\$4,360	\$6,833	\$7,193	\$7,333	\$7,693
2	\$5,560	\$5,920	\$9,966	\$10,326	\$11,093	\$11,093
3	\$7,120	\$7,480	\$13,100	\$13,460	\$15,113	\$14,493
4	\$8,680	\$9,040	\$16,233	\$16,593	\$18,686	\$17,893
5	\$10,240	\$10,600	\$19,366	\$19,726	\$22,260	\$21,293
6	\$11,800	\$12,160	\$22,500	\$22,860	\$25,833	\$24,693
7	\$13,360	\$13,720	\$25,633	\$25,993	\$29,406	\$28,093
8	\$14,920	\$15,280	\$28,766	\$29,126	\$32,980	\$31,493

### VT-8DA 190mm bowl diameter

1	\$4,000	\$4,360	\$6,833	\$7,193	\$7,333	\$7,693
2	\$5,560	\$5,920	\$9,966	\$10,326	\$11,093	\$11,093
3	\$7,120	\$7,480	\$13,100	\$13,460	\$15,113	\$14,493
4	\$8,680	\$9,040	\$16,233	\$16,593	\$18,686	\$17,893
5	\$10,240	\$10,600	\$19,366	\$19,726	\$22,260	\$21,293
6	\$11,800	\$12,160	\$22,500	\$22,860	\$25,833	\$24,693
7	\$13,360	\$13,720	\$25,633	\$25,993	\$29,406	\$28,093
8	\$14,920	\$15,280	\$28,766	\$29,126	\$32,980	\$31,493

#### Notes:

To order, VT model number, no of stages, column type and material type  
 Order separately: Column, discharge head and drive type  
 Higher stage count models are available on request



## VT series - 8" Line Shaft Turbines



Stages	Cast Iron		Bronze ZF		316SS	
	Water Lube	Oil Lube	Water Lube	Oil Lube	Water Lube	Oil Lube

### VT-8DB 190mm bowl diameter

1	\$4,400	\$4,760	\$6,833	\$7,193	\$7,333	\$7,693
2	\$6,360	\$6,720	\$9,966	\$10,326	\$11,093	\$11,093
3	\$8,320	\$8,680	\$13,100	\$13,460	\$15,113	\$14,493
4	\$10,280	\$10,640	\$16,233	\$16,593	\$18,686	\$17,893
5	\$12,240	\$12,600	\$19,366	\$19,726	\$22,260	\$21,293
6	\$14,200	\$14,560	\$22,500	\$22,860	\$25,833	\$24,693
7	\$16,160	\$16,520	\$25,633	\$25,993	\$29,406	\$28,093
8	\$18,120	\$18,480	\$28,766	\$29,126	\$32,980	\$31,493

### VT-8EA 190mm bowl diameter

1	\$4,000	\$4,360	\$6,833	\$7,193	\$7,333	\$7,693
2	\$5,560	\$5,920	\$9,966	\$10,326	\$11,093	\$11,093
3	\$7,120	\$7,480	\$13,100	\$13,460	\$15,113	\$14,493
4	\$8,680	\$9,040	\$16,233	\$16,593	\$18,686	\$17,893
5	\$10,240	\$10,600	\$19,366	\$19,726	\$22,260	\$21,293
6	\$11,800	\$12,160	\$22,500	\$22,860	\$25,833	\$24,693
7	\$13,360	\$13,720	\$25,633	\$25,993	\$29,406	\$28,093
8	\$14,920	\$15,280	\$28,766	\$29,126	\$32,980	\$31,493

### VT-8GA 186mm bowl diameter

1	\$3,840	\$4,200				
2	\$4,880	\$5,240				
3	\$5,920	\$6,280				
4	\$6,960	\$7,320	POA	POA	POA	POA
5	\$8,000	\$8,360				
6	\$9,040	\$9,400				
7	\$10,080	\$10,440				
8	\$11,120	\$11,480				

### VT-8HA 190mm bowl diameter

1	\$3,840	\$4,200				
2	\$4,880	\$5,240				
3	\$5,920	\$6,280				
4	\$6,960	\$7,320	POA	POA	POA	POA
5	\$8,000	\$8,360				
6	\$9,040	\$9,400				

#### Notes:

To order; VT model number, no of stages, column type and material type  
 Order separately: Column, discharge head and drive type  
 Higher stage count models are available on request



## VT series - 10" Line Shaft Turbines



Stages	Cast Iron		Bronze ZF		316SS	
	Water Lube	Oil Lube	Water Lube	Oil Lube	Water Lube	Oil Lube
<b>VT-10AA 240mm bowl diameter</b>						
1	\$4,243	\$4,603	\$9,716	\$10,076	\$10,200	\$10,560
2	\$6,116	\$6,476	\$14,116	\$14,476	\$15,040	\$15,400
3	\$7,989	\$8,349	\$18,516	\$18,876	\$19,880	\$20,240
4	\$9,861	\$10,221	\$22,916	\$23,276	\$24,720	\$25,080
5	\$11,734	\$12,094	\$27,316	\$27,676	\$29,560	\$29,920
6	\$13,607	\$13,967	\$31,716	\$32,076	\$34,400	\$34,760

<b>VT-10BA 240mm bowl diameter</b>						
1	\$4,243	\$4,603	\$9,716	\$10,076	\$10,200	\$10,560
2	\$6,116	\$6,476	\$14,116	\$14,476	\$15,040	\$15,400
3	\$7,989	\$8,349	\$18,516	\$18,876	\$19,880	\$20,240
4	\$9,861	\$10,221	\$22,916	\$23,276	\$24,720	\$25,080
5	\$11,734	\$12,094	\$27,316	\$27,676	\$29,560	\$29,920
6	\$13,607	\$13,967	\$31,716	\$32,076	\$34,400	\$34,760

<b>VT-10CA 240mm bowl diameter</b>						
1	\$4,243	\$4,603	\$9,716	\$10,076	\$10,200	\$10,560
2	\$6,116	\$6,476	\$14,116	\$14,476	\$15,040	\$15,400
3	\$7,989	\$8,349	\$18,516	\$18,876	\$19,880	\$20,240
4	\$9,861	\$10,221	\$22,916	\$23,276	\$24,720	\$25,080
5	\$11,734	\$12,094	\$27,316	\$27,676	\$29,560	\$29,920

<b>VT-10DA 240mm bowl diameter</b>						
1	\$5,500	\$5,860	\$10,534	\$10,894	\$10,727	\$11,087
2	\$8,166	\$8,526	\$15,280	\$15,640	\$15,836	\$19,196
3	\$10,833	\$11,193	\$20,025	\$20,385	\$20,945	\$21,305
4	\$13,500	\$13,860	\$24,770	\$25,130	\$26,054	\$26,414
5	\$16,166	\$16,526	\$29,516	\$29,876	\$31,163	\$31,523

<b>VT-10EA 240mm bowl diameter</b>						
1	\$5,500	\$5,860	\$10,534	\$10,894	\$10,727	\$11,087
2	\$8,166	\$8,526	\$15,280	\$15,640	\$15,836	\$19,196
3	\$10,833	\$11,193	\$20,025	\$20,385	\$20,945	\$21,305
4	\$13,500	\$13,860	\$24,770	\$25,130	\$26,054	\$26,414
5	\$16,166	\$16,526	\$29,516	\$29,876	\$31,163	\$31,523
6	\$18,833	\$19,193	\$34,261	\$34,621	\$36,272	\$36,632

### Notes:

To order; VT model number, no of stages, column type and material type  
 Order separately: Column, discharge head and drive type  
 Higher stage count models are available on request



## VT series - 10" Line Shaft Turbines



Stages	Cast Iron		Bronze ZF		316SS	
	Water Lube	Oil Lube	Water Lube	Oil Lube	Water Lube	Oil Lube
<b>VT-10GA 250mm bowl diameter</b>						
1	\$4,243	\$4,603	\$9,716	\$10,076	\$10,200	\$10,560
2	\$6,116	\$6,476	\$14,116	\$14,476	\$15,040	\$15,400
3	\$7,989	\$8,349	\$18,516	\$18,876	\$19,880	\$20,240
4	\$9,861	\$10,221	\$22,916	\$23,276	\$24,720	\$25,080
5	\$11,734	\$12,094	\$27,316	\$27,676	\$29,560	\$29,920
6	\$13,607	\$13,967	\$31,716	\$32,076	\$34,400	\$34,760

<b>VT-10HA 250mm bowl diameter</b>						
1	\$4,243	\$4,603	\$9,716	\$10,076	\$10,200	\$10,560
2	\$6,116	\$6,476	\$14,116	\$14,476	\$15,040	\$15,400
3	\$7,989	\$8,349	\$18,516	\$18,876	\$19,880	\$20,240
4	\$9,861	\$10,221	\$22,916	\$23,276	\$24,720	\$25,080
5	\$11,734	\$12,094	\$27,316	\$27,676	\$29,560	\$29,920
6	\$13,607	\$13,967	\$31,716	\$32,076	\$34,400	\$34,760

<b>VT-10JA 250mm bowl diameter</b>						
1	\$4,243	\$4,603	\$9,716	\$10,076	\$10,200	\$10,560
2	\$6,116	\$6,476	\$14,116	\$14,476	\$15,040	\$15,400
3	\$7,989	\$8,349	\$18,516	\$18,876	\$19,880	\$20,240
4	\$9,861	\$10,221	\$22,916	\$23,276	\$24,720	\$25,080
5	\$11,734	\$12,094	\$27,316	\$27,676	\$29,560	\$29,920
6	\$13,607	\$13,967	\$31,716	\$32,076	\$34,400	\$34,760

<b>VT-10KA 250mm bowl diameter</b>						
1	\$4,243	\$4,603	\$9,716	\$10,076	\$10,200	\$10,560
2	\$6,116	\$6,476	\$14,116	\$14,476	\$15,040	\$15,400
3	\$7,989	\$8,349	\$18,516	\$18,876	\$19,880	\$20,240
4	\$9,861	\$10,221	\$22,916	\$23,276	\$24,720	\$25,080
5	\$11,734	\$12,094	\$27,316	\$27,676	\$29,560	\$29,920

### Notes:

To order; VT model number, no of stages, column type and material type  
 Order separately: Column, discharge head and drive type  
 Higher stage count models are available on request





## VT series - 12" Line Shaft Turbines



Stages	Cast Iron		Bronze ZF		316SS	
	Water Lube	Oil Lube	Water Lube	Oil Lube	Water Lube	Oil Lube

### VT-12AA 298mm bowl diameter

1	\$6,498	\$6,898	\$14,996	\$15,396	\$15,250	\$15,560
2	\$9,770	\$10,170	\$22,486	\$22,886	\$22,867	\$23,267
3	\$13,043	\$13,443	\$29,976	\$30,376	\$30,484	\$30,884
4	\$16,316	\$16,716	\$37,466	\$37,866	\$38,101	\$38,501
5	\$19,589	\$19,989	\$44,956	\$45,356	\$45,718	\$46,118
6	\$22,861	\$23,261	\$52,446	\$52,846	\$53,335	\$53,735
7	\$26,134	\$26,534	\$59,936	\$60,336	\$60,952	\$61,352
8	\$29,407	\$29,807	\$67,426	\$67,826	\$68,569	\$68,969
9	\$32,680	\$33,080	\$74,916	\$75,316	\$76,189	\$76,586

### VT-12BA 292mm bowl diameter

1	\$6,498	\$6,898	\$14,996	\$15,396	\$15,250	\$15,560
2	\$9,770	\$10,170	\$22,486	\$22,886	\$22,867	\$23,267
3	\$13,043	\$13,443	\$29,976	\$30,376	\$30,484	\$30,884
4	\$16,316	\$16,716	\$37,466	\$37,866	\$38,101	\$38,501
5	\$19,589	\$19,989	\$44,956	\$45,356	\$45,718	\$46,118
6	\$22,861	\$23,261	\$52,446	\$52,846	\$53,335	\$53,735
7	\$26,134	\$26,534	\$59,936	\$60,336	\$60,952	\$61,352
8	\$29,407	\$29,807	\$67,426	\$67,826	\$68,569	\$68,969

### VT-12CA 292mm bowl diameter

1	\$6,498	\$6,898	\$14,996	\$15,396	\$15,250	\$15,560
2	\$9,770	\$10,170	\$22,486	\$22,886	\$22,867	\$23,267
3	\$13,043	\$13,443	\$29,976	\$30,376	\$30,484	\$30,884
4	\$16,316	\$16,716	\$37,466	\$37,866	\$38,101	\$38,501
5	\$19,589	\$19,989	\$44,956	\$45,356	\$45,718	\$46,118
6	\$22,861	\$23,261	\$52,446	\$52,846	\$53,335	\$53,735

#### Notes:

To order; VT model number, no of stages, column type and material type  
 Order separately: Column, discharge head and drive type  
 Higher stage count models are available on request



## VT series - 14" - 16" - 18" Line Shaft Turbines

Stages	Cast Iron		Bronze ZF		316SS	
	Water Lube	Oil Lube	Water Lube	Oil Lube	Water Lube	Oil Lube

### VT-14AA 340mm bowl diameter

1	\$9,032	\$9,432	POA	POA	POA	POA
2	\$13,687	\$14,087				
3	\$18,341	\$18,741				
4	\$22,996	\$23,396				
5	\$27,650	\$28,050				

### VT-14BA 350mm bowl diameter

1	\$14,050	\$14,450	\$26,000	\$26,400	POA	POA
2	\$20,814	\$21,214	\$38,000	\$38,400		
3	\$27,578	\$27,978	\$50,000	\$50,400		
4	\$34,341	\$34,741	\$62,000	\$62,400		
5	\$41,105	\$41,505	\$74,000	\$74,400		
6	\$47,869	\$48,269	\$86,000	\$86,400		
7	\$54,632	\$55,032	\$98,000	\$98,400		

### VT-16AA 393mm bowl diameter

1	\$13,447	\$13,847	\$23,666	\$24,066	POA	POA
2	\$20,356	\$20,756	\$35,500	\$35,900		
3	\$27,265	\$27,665	\$47,333	\$47,733		
4	\$34,174	\$34,574	\$59,166	\$59,566		
5	\$41,083	\$41,483	\$71,000	\$71,400		
6	\$47,992	\$48,392	\$82,333	\$83,233		
7	\$54,901	\$55,301	\$94,666	\$95,066		
8	\$61,810	\$62,210	\$106,500	\$106,900		

### VT-18AA 440mm bowl diameter

1	\$16,509	\$16,909	POA	POA	POA	POA
2	\$25,109	\$25,509				
3	\$33,709	\$34,109				
4	\$42,309	\$42,709				
5	\$50,909	\$51,309				

### VT-18BA 432mm bowl diameter

1	\$16,509	\$16,909	POA	POA	POA	POA
2	\$25,109	\$25,509				
3	\$33,709	\$34,109				

### VT-18CA 445mm bowl diameter

1	\$17,381	\$17,781	\$32,363	\$32,763	POA	POA
2	\$27,418	\$27,818	\$50,181	\$50,581		
3	\$37,454	\$37,854	\$68,000	\$68,400		
4	\$47,490	\$47,890	\$85,818	\$86,218		
5	\$57,527	\$57,927	\$103,636	\$104,036		

#### Notes:

To order; VT model number, no of stages, column type and material type  
 Order separately: Column, discharge head and drive type  
 Higher stage count models are available on request



## AX - MX series - 8" - 10" - 12" Line Shaft Turbines



Stages	Cast Iron		Bronze ZF		316SS	
	Water Lube	Oil Lube	Water Lube	Oil Lube	Water Lube	Oil Lube
<b>MX-8AA</b>		<b>190mm bowl diameter</b>		<b>Mixed Flow</b>		
1	\$4,543	\$4,903	\$7,256	\$7,616	\$7,966	\$8,326
2	\$6,630	\$6,990	\$10,506	\$10,866	\$11,540	\$11,900
3	\$8,716	\$9,076	\$13,756	\$14,116	\$15,113	\$15,473
4	\$10,803	\$11,163	\$17,006	\$17,366	\$18,686	\$19,046
5	\$12,890	\$13,250	\$20,256	\$20,616	\$22,260	\$22,620
6	\$14,976	\$15,336	\$23,506	\$23,866	\$25,833	\$26,193
7	\$17,063	\$17,423	\$26,756	\$27,116	\$29,406	\$29,766
8	\$19,150	\$19,510	\$30,006	\$30,366	\$32,980	\$33,340
9	\$21,236	\$21,596	\$33,256	\$33,616	\$36,553	\$36,913
10	\$23,323	\$23,683	\$36,506	\$36,866	\$40,126	\$40,486

Stages	Cast Iron		Bronze ZF		316SS	
	Water Lube	Oil Lube	Water Lube	Oil Lube	Water Lube	Oil Lube
<b>MX-10AA</b>		<b>240mm bowl diameter</b>		<b>Mixed Flow</b>		
1	\$5,500	\$5,860	\$10,534	\$10,894	\$10,727	\$11,087
2	\$8,166	\$8,526	\$15,280	\$15,640	\$15,836	\$16,196
3	\$10,833	\$11,193	\$20,025	\$20,385	\$20,945	\$21,305



Stages	Cast Iron		Bronze ZF		316SS	
	Water Lube	Oil Lube	Water Lube	Oil Lube	Water Lube	Oil Lube
<b>MX-12AA</b>		<b>382mm bowl diameter</b>		<b>Mixed Flow</b>		
1	POA	POA	POA	POA	POA	POA
2	POA	POA	POA	POA	POA	POA

### Notes:

To order; AX-MX model number, no of stages, column type and material type  
Order separately: Column, discharge head and drive type



## AX - MX series - 14" - 16" - 20" Line Shaft Turbines



Stages	Cast Iron		Bronze ZF		316SS	
	Water Lube	Oil Lube	Water Lube	Oil Lube	Water Lube	Oil Lube
<b>AX-14AA</b>			410mm bowl diameter		<b>Axial Flow</b>	
1	\$14,050	\$14,450	POA	POA	POA	POA
2	\$20,814	\$21,214				

<b>MX-14AA</b>			460mm bowl diameter		<b>Mixed Flow</b>	
1	\$14,050	\$14,450	POA	POA	POA	POA
2	\$20,814	\$21,214				

<b>MX-14BA</b>			446mm bowl diameter		<b>Mixed Flow</b>	
1	\$14,050	\$14,450	POA	POA	POA	POA
2	\$20,814	\$21,214				

Stages	Cast Iron		Bronze ZF		316SS	
	Water Lube	Oil Lube	Water Lube	Oil Lube	Water Lube	Oil Lube
<b>MX-16AA</b>			510mm bowl diameter		<b>Mixed Flow</b>	
1	\$13,447	\$13,847	POA	POA	POA	POA
2	\$20,356	\$20,756				

Stages	Cast Iron		Bronze ZF		316SS	
	Water Lube	Oil Lube	Water Lube	Oil Lube	Water Lube	Oil Lube
<b>AX-20AA</b>			560mm bowl diameter		<b>Axial Flow</b>	
1	\$28,229	\$29,429	POA	POA	POA	POA
2	\$53,258	\$54,458				

<b>MX-20AA</b>			610mm bowl diameter		<b>Mixed Flow</b>	
1	\$28,229	\$29,429	POA	POA	POA	POA
2	\$53,258	\$54,458				



### Notes:

To order; AX-MX model number, no of stages, column type and material type  
Order separately: Column, discharge head and drive type





## Submersible Riser Main Column



Column size (inches)	CARBON STEEL			
	Threaded Sch 40 Steel Pipe 3 metres		Flanged Sch 40 Steel Pipe 3 metres	
	Order Number	Price	Order Number	Price
4"	SRM-100I-T-1-1-1000	\$661.60	SRM-100I-F-1-2-1000	\$772
5"	SRM-125I-T-1-1-1000	\$752.80	SRM-125I-F-1-2-1000	\$936
6"	SRM-150I-T-1-1-1000	\$901.60	SRM-150I-F-1-2-1000	\$1,180
8"	SRM-200I-T-1-1-1000	\$1,175	SRM-200I-F-1-2-1000	\$1,476
10"	SRM-250I-T-1-1-1000	\$1,525	SRM-250I-F-1-2-1000	\$1,968
12"	SRM-300I-T-1-1-1000	\$2,088.40	SRM-300I-F-1-2-1000	\$2,348

Column size (inches)	304 STAINLESS STEEL			
	Threaded* Sch 40 304SS Pipe 3 metres		Flanged Sch 10 304SS Pipe 3 metres	
	Order Number	Price	Order Number	Price
4"	SRM-100I-T-1-6-1000	\$1,094	SRM-100I-F-2-2-1000	\$1,092.80
5"	SRM-125I-T-1-6-1000	\$1,634	SRM-125I-F-2-2-1000	\$1,268.20
6"	SRM-150I-T-1-6-1000	\$2,358	SRM-150I-F-2-2-1000	\$1,764
8"	SRM-200I-T-1-6-1000	\$4,150	SRM-200I-F-2-2-1000	\$2,418
10"	SRM-250I-T-1-6-1000	\$5,556	SRM-250I-F-2-2-1000	\$3,150
12"	SRM-300I-T-1-6-1000	POA	SRM-300I-F-2-2-1000	\$4,510

### Notes:

\* Threaded 304SS riser main column has a Bronze coupling to minimise thread galling.

Threaded steel riser column has a steel coupling

Each flange has a notch to allow the submersible cable to pass within flange diameter

Each 3 metre length of flanged column is supplied with;

(1) gasket

(1) bolt kit (bolt/nuts/washers)



## Water Lube Column - Carbon Steel



Water lube Column and Shaft Assembly CARBON STEEL									
Shaft size (inches)	Column size (inches)	Threaded				Flanged			
		Sch 40 steel pipe				Sch 40 steel pipe			
		431SS shaft Bronze shaft couplings Carbon steel column coupling Bronze bearing retainers				431SS shaft Bronze shaft couplings Bronze bearing retainers			
		3 Metre				3 Metre			
		Order Number	3M bearing centre	Order Number	1.5M bearing centre	Order Number	3M bearing centre	Order Number	1.5M bearing centre
1"	4"	WLC-10004T103	\$1,153.38	WLC-10004T101	\$1,779.23	WLC-10004F103	\$1,199.54	WLC-10004F101	\$1,871.54
	6"	WLC-10006T103	\$1,507.23	WLC-10006T101	\$2,403.85	WLC-10006F103	\$1,707.23	WLC-10006F101	\$2,803.85
	8"	WLC-10008T103	\$1,732.92	WLC-10008T101	\$2,735.23	WLC-10008F103	\$1,976.00	WLC-10008F101	\$3,221.38
1-1/4"	4"	WLC-20004T103	\$1,261.48	WLC-20004T101	\$1,896.56	WLC-20004F103	\$1,307.64	WLC-20004F101	\$1,988.87
	6"	WLC-20006T103	\$1,615.33	WLC-20006T101	\$2,521.18	WLC-20006F103	\$1,815.33	WLC-20006F101	\$2,921.18
	8"	WLC-20008T103	\$1,841.02	WLC-20008T101	\$2,834.10	WLC-20008F103	\$2,084.10	WLC-20008F101	\$3,320.25
	10"	WLC-20010T103	\$2,248.71	WLC-20010T101	\$3,446.41	WLC-20010F103	\$2,621.02	WLC-20010F101	\$4,191.02
	12"	WLC-20012T103	\$2,820.56	WLC-20012T101	\$4,377.79	WLC-20012F103	\$3,242.10	WLC-20012F101	\$5,220.87
1-1/2"	6"	WLC-30006T103	\$1,751.48	WLC-30006T101	\$2,660.41	WLC-30006F103	\$1,951.48	WLC-30006F101	\$3,060.41
	8"	WLC-30008T103	\$1,977.18	WLC-30008T101	\$2,973.33	WLC-30008F103	\$2,220.25	WLC-30008F101	\$3,459.48
	10"	WLC-30010T103	\$2,384.87	WLC-30010T101	\$2,585.64	WLC-30010F103	\$2,757.18	WLC-30010F101	\$4,330.25
	12"	WLC-30012T103	\$2,956.71	WLC-30012T101	\$4,517.02	WLC-30012F103	\$3,378.25	WLC-30012F101	\$5,360.10
	14"	WLC-30014T103		WLC-30014T101		WLC-30014F103	\$3,630.56	WLC-30014F101	\$5,790.87
	16"	WLC-30016T103		WLC-30016T101		WLC-30016F103			
1-3/4"	6"	WLC-40006T103	\$1,952.00	WLC-40006T101	\$2,687.08	WLC-40006F103	\$2,152.00	WLC-30006F101	\$3,267.08
	8"	WLC-40008T103	\$2,177.69	WLC-40008T101	\$3,180.00	WLC-40008F103	\$2,420.77	WLC-30008F101	\$3,666.15
	10"	WLC-40010T103	\$2,585.38	WLC-40010T101	\$3,792.31	WLC-40010F103	\$2,957.69	WLC-30010F101	\$4,536.92
	12"	WLC-40012T103	\$3,157.23	WLC-40012T101	\$4,723.69	WLC-40012F103	\$3,578.77	WLC-30012F101	\$5,566.77
	14"	WLC-40014T103		WLC-40014T101		WLC-40014F103	\$3,831.08	WLC-30014F101	\$5,997.54
	16"	WLC-40016T103		WLC-40016T101		WLC-40016F103		WLC-30016F101	
	18"	WLC-40018T103		WLC-40018T101				WLC-30018F101	\$6,939.08

### Notes:

Pumps above 2,200 rpm must use 1.5 metre (5 foot) bearing centre column

Pumps below 2,200 rpm may use 3 metre (10 foot) bearing centre column

Mild steel column is painted with bituminous coating to protect and minimise rust/corrosion

Threaded Carbon steel column has carbon steel column coupling



## Water Lube Column - Stainless Steel



Water lube Column and Shaft Assembly 304 Stainless Steel									
Shaft size (inches)	Column size (inches)	Threaded				Flanged			
		Sch 40 304SS pipe 431SS shaft Bronze shaft coupling Bronze column coupling (1) Bronze bearing retainers				Sch 10 304SS pipe 431SS shaft Bronze shaft coupling Bronze bearing retainers			
		3 Metre				3 Metre			
		Order Number	3M bearing centre	Order Number	1.5M bearing centre	Order Number	3M bearing centre	Order Number	1.5M bearing centre
1"	4"	WLC-1004T203		WLC-10004T201	\$2,802.37	WLC-1004F203	\$1,592.46	WLC-10004F201	\$2,602.92
	6"	WLC-1006T204		WLC-10006T202	\$4,059.35	WLC-1006F204	\$2,148.77	WLC-10006F202	\$3,414.62
	8"	WLC-1008T205		WLC-10008T203	\$5,862.92	WLC-1008F205	\$2,739.08	WLC-10008F203	\$4,341.38
1-1/4"	4"	WLC-20004T203		WLC-20004T201	\$2,919.70	WLC-20004F203	\$1,700.56	WLC-20004F201	\$2,720.25
	6"	WLC-20006T203		WLC-20006T201	\$4,176.68	WLC-20006F203	\$2,256.87	WLC-20006F201	\$3,531.94
	8"	WLC-20008T203		WLC-20008T201	\$5,961.79	WLC-20008F203	\$2,847.18	WLC-20008F201	\$4,440.25
	10"	WLC-20010T203	\$5,580.64	WLC-20010T201	\$7,834.87	WLC-20010F203	\$3,522.56	WLC-20010F201	\$5,504.87
	12"	WLC-20012T203		WLC-20012T201		WLC-20012F203	\$4,897.48	WLC-20012F201	\$7,608.56
1-1/2"	6"	WLC-30006T203		WLC-30006T201	\$4,297.35	WLC-30006F203	\$2,393.02	WLC-30006F201	\$3,671.18
	8"	WLC-30008T203		WLC-30008T201	\$6,062.68	WLC-30008F203	\$2,983.33	WLC-30008F201	\$4,579.48
	10"	WLC-30010T203	\$5,716.79	WLC-30010T201	\$7,974.10	WLC-30010F203	\$3,658.71	WLC-30010F201	\$5,644.10
	12"	WLC-30012T203		WLC-30012T201		WLC-30012F203	\$5,033.64	WLC-30012F201	\$7,747.79
	14"	WLC-30014T203		WLC-30014T201		WLC-30014F203		WLC-30014F201	
	16"	WLC-30016T203		WLC-30016T201		WLC-30016F203		WLC-30016F201	
1-3/4"	6"	WLC-40006T203		WLC-40006T201	\$4,414.40	WLC-40006F203	\$2,593.54	WLC-40006F201	\$3,877.85
	8"	WLC-40008T203		WLC-40008T201	\$6,164.30	WLC-40008F203	\$3,183.85	WLC-40008F201	\$4,786.15
	10"	WLC-40010T203		WLC-40010T201	\$8,114.68	WLC-40010F203	\$3,859.23	WLC-40010F201	\$5,850.77
	12"	WLC-40012T203		WLC-40012T201		WLC-40012F203	\$5,234.15	WLC-40012F201	\$7,954.46
	14"	WLC-40014T203		WLC-40014T201		WLC-40014F203		WLC-40014F201	
	16"	WLC-40016T203		WLC-40016T201		WLC-40016F203		WLC-40016F201	
	18"	WLC-40018T203		WLC-40018T201		WLC-40018F203		WLC-40018F201	

### Notes:

Pumps above 2,200 rpm must use 1.5 metre (5 foot) bearing centre column

Pumps below 2,200 rpm may use 3 metre (10 foot) bearing centre column

(1) Threaded 304SS column has Bronze column coupling. SS column coupling available as option

4" and 6", 3M x 1.5M BC, no price adder for 316SS column coupling in lieu of Bronze

8" x 3M x 1.5M BC, add \$726 List for 316SS column coupling

10" 3M x 1.5M/3M BC, POA



## Spare Parts - Water Lube Column



Column only - Water Lube			CARBON STEEL	
Size	Column Sch 40	THREADED	Column Sch 40	THREADED
	Order Number	3 metres Price	Order Number	1.5 metres Price
4"	CPA-THR-1001-3000-1-1000	\$432	CPA-THR-1001-1500-1-1000	\$306
6"	CPA-THR-1501-3000-1-1000	\$660	CPA-THR-1501-1500-1-1000	\$480
8"	CPA-THR-2001-3000-1-1000	\$840	CPA-THR-2001-1500-1-1000	\$570
10"	CPA-THR-2501-3000-1-1000	\$1,104	CPA-THR-2501-1500-1-1000	\$702
12"	CPA-THR-3001-3000-1-1000	\$1,440	CPA-THR-3001-1500-1-1000	\$900
14"	CPA-THR-3501-3000-1-1000	\$1,616	CPA-THR-3501-1500-1-1000	\$1,028



Threaded Column Coupling		CARBON STEEL
Size	Order Number	Price
4"	CC-RHF-1001-1-1000	\$229.60
5"	CC-RHF-1251-1-1000	\$236.80
6"	CC-RHF-1501-1-1000	\$261.60
8"	CC-RHF-2001-1-1000	\$335
10"	CC-RHF-2501-1-1000	\$421
12"	CC-RHF-3001-1-1000	\$648.40

Right hand thread



Column only - Water Lube			CARBON STEEL	
Size	Column Sch 40	FLANGED	Column Sch 40	FLANGED
	Order Number	3 metres Price	Order Number	1.5 metres Price
4"	CPA-FL-1001-3000-1-1000	\$552	CPA-FL-1001-1500-1-1000	\$426
6"	CPA-FL-1501-3000-1-1000	\$980	CPA-FL-1501-1500-1-1000	\$800
8"	CPA-FL-2001-3000-1-1000	\$1,216	CPA-FL-2001-1500-1-1000	\$946
10"	CPA-FL-2501-3000-1-1000	\$1,648	CPA-FL-2501-1500-1-1000	\$1,246
12"	CPA-FL-3001-3000-1-1000	\$1,988	CPA-FL-3001-1500-1-1000	\$1,448
14"	CPA-FL-3501-3000-1-1000	\$2,416	CPA-FL-3501-1500-1-1000	\$1,828

Note: Column supplied without bolts and nuts

Due to Stainless Steel column, flanged or threaded lasting longer when installed, pricing as replacement parts is available but not listed



Line Shaft 431SS (3 metres)		
Size	Order Number	Price
1"	LS-251-3000-LH-3-1000	\$313.80
1-1/4"	LS-321-3000-LH-3-1000	\$422.33
1-1/2"	LS-381-3000-LH-3-1000	\$555.33
1-3/4"	LS-441-3000-LH-3-1000	\$728
2"	LS-501-3000-LH-3-1000	\$1,030.40
2-1/4"	LS-571-3000-LH-3-1000	\$1,243.20

For Threaded and Flanged column  
Standard thread is Left Hand  
Right Hand thread is available





## Spare Parts - Water Lube Column



Line Shaft Coupling		BRONZE
Size	Order Number	Price
1"	LSC-TH-LH-251-3-1000	\$120
1-1/4"	LSC-TH-LH-321-3-1000	\$140
1-1/2"	LSC-TH-LH-381-3-1000	\$180
1-3/4"	LSC-TH-LH-441-3-1000	\$260
2"	LSC-TH-LH-501-3-1000	\$360

Standard thread is Left Hand  
Right Hand thread is available



Bearing Retainer - Threaded Col		BRONZE
Size	Order Number	Price
4"	BR-TH-1001-251-CA-3-1000	\$440
5"	BR-TH-1251-251-CA-3-1000	\$608
6"	BR-TH-1501-251-CA-3-1000	\$640
8"	BR-TH-2001-321-CA-3-1000	\$680
10"	BR-TH-2501-381-CA-3-1000	\$800
12"	BR-TH-3001-441-CA-3-1000	\$1,040
14"	BR-TH-3501-441-CA-3-1000	\$1,080

Order bearing & clip separately



Bearing Retainer - Flanged Col		BRONZE
Size	Order Number	Price
4"	BR-FL-1001-251-501-CA-3-1000	\$0
5"	BR-FL-1201-251-501-CA-3-1000	\$0
6"	BR-FL-1501-251-501-CA-3-1000	\$0
8"	BR-FL-2001-321-501-CA-3-1000	\$0
10"	BR-FL-2501-381-501-CA-3-1000	\$0
12"	BR-FL-3001-441-501-CA-3-1000	\$0
14"	BR-FL-3501-441-501-CA-3-1000	\$0

Order bearing & clip separately



Bearing NBR PRC - Fluted with clip			NBR in Phenolic Resin Casing
Size	Order Number	Price	
1"	BEFR-251-381-76-3	\$40	1" x 1-1/2" x 76mm
1-1/4"	BEFR-321-571-78-1	\$52	1-1/4" x 2-1/2" x 45mm
1-1/2"	BEFR-381-501-60-3	\$56	1-1/2" x 2" x 60mm
1-3/4"	BEFR-441-601-87-3	\$68	1-3/4" x 2-3/8" x 87mm
2"	BEFR-501-671-75-3	\$104	2" x 2-5/8" x 3"
2-1/4"	BEFR-571-791-75-3	\$144	2-1/4" x 3-1/8" x 75mm



## Oil Lube Column - Carbon Steel



Oil Lube Column and Shaft Assembly					CARBON STEEL	
Shaft size (inches)	Oil tube (inches)	Column size (inches)	Threaded		Flanged	
			Sch 40 steel pipe 431SS shaft, steel shaft couplings Steel column coupling Bronze bearing		Sch 40 steel pipe 431SS shaft, steel shaft couplings Bronze bearing	
			3 Metre		3 Metre	
			Order Number	1.5 M bearing centre	Order Number	1.5 M bearing centre
1"	2"	4"	OLC-10204T111	\$1,491.85	OLC-10204F111	\$1,469.08
		6"	OLC-10206T111	\$1,691.85	OLC-10204F111	\$1,813.69
		8"	OLC-10208T111	\$1,886.77	OLC-10204F111	\$2,026.00
1-1/4"	2"	4"	OLC-20204T111	\$1,590.71	OLC-20204F111	\$1,629.48
		6"	OLC-20206T111	\$1,790.71	OLC-20206F111	\$1,912.56
		8"	OLC-20208T111	\$1,985.64	OLC-20208F111	\$2,124.87
		10"	OLC-20210T111	\$2,301.02	OLC-20210F111	\$2,534.10
		12"	OLC-20212T111	\$2,688.25	OLC-20212F111	\$3,011.02
1-1/2"	2-1/2"	6"	OLC-32506T111	\$2,046.87	OLC-32506F111	\$2,168.71
		8"	OLC-32506T111	\$2,241.79	OLC-32508F111	\$2,381.02
		10"	OLC-32506T111	\$2,557.18	OLC-32510F111	\$2,790.25
		12"	OLC-32506T111	\$2,944.41	OLC-32512F111	\$3,082.56
		14"			OLC-32514F111	\$3,350.25
		16"				
1-3/4"	3"	6"	OLC-42506T111	\$2,438.15	OLC-42506F111	\$2,560.00
		8"	OLC-42508T111	\$2,633.08	OLC-42508F111	\$2,772.31
		10"	OLC-42510T111	\$2,948.46	OLC-42510F111	\$3,181.54
		12"	OLC-42512T111	\$3,335.69	OLC-42512F111	\$3,473.85
		14"			OLC-42514F111	\$3,972.31
		16"				
		18"			OLC-42518F111	\$3,990.77

Oil Tube Stabilizer (Centraliser)	Rubber (1)		Steel (2)	
	6" x 2"	\$83.33		\$316.37
	8" x 2-1/2"	\$100.00		\$333.33
	10" x 1-1/2"	\$160.00		\$433.33
	12" x 3"	\$183.33		\$500.00
	14" x 3"	\$283.33		\$666.67



(1) For vertical installation, install rubber stabilizers at least one (1) every 12 metres

(2) For inclined/angle installation, install steel stabilisers every 3 metres

Mild steel column and the Oil tube are painted with bituminous coating to protect and minimise rust/corrosion

Threaded Carbon steel column has carbon steel column coupling



## Oil Lube Column - Stainless Steel



Oil Lube Column and Shaft Assembly 304 Stainless Steel						
Shaft size (inches)	Oil tube (inches)	Column size (inches)	Threaded		Flanged	
			Sch 40 304SS pipe 431SS shaft, steel shaft coupling Bronze column coupling Bronze bearing		Sch 10 304SS pipe 431SS shaft, steel shaft coupling Bronze bearing	
			3 metre		3 metre	
			Order Number	1.5 M bearing centre	Order Number	1.5 M bearing centre
1"	2"	4"	OLC-10204T211	\$1,685.69	OLC-10204F211	\$1,923.54
		6"	OLC-10206T211	\$2,402.62	OLC-10204F211	\$2,362.92
		8"	OLC-10208T211	\$3,206.77	OLC-10204F211	\$2,866.00
1-1/4"	2"	4"	OLC-20204T211	\$1,784.56	OLC-20204F211	\$2,022.41
		6"	OLC-20206T211	\$2,501.48	OLC-20206F211	\$2,461.79
		8"	OLC-20208T211	\$3,305.64	OLC-20208F211	\$2,964.87
		10"	OLC-20210T211	\$4,437.94	OLC-20210F211	\$3,574.10
		12"	OLC-20212T211	\$5,715.94	OLC-20212F211	\$4,666.41
1-1/2"	2-1/2"	6"	OLC-32506T211	\$2,757.64	OLC-32506F211	\$2,717.94
		8"	OLC-32506T211	\$3,561.79	OLC-32508F211	\$3,221.02
		10"	OLC-32506T211	\$4,694.10	OLC-32510F211	\$3,830.25
		12"	OLC-32506T211	\$5,972.10	OLC-32512F211	\$4,922.56
		14"				
		16"				
1-3/4"	3"	6"	OLC-42506T211	\$3,148.92	OLC-42506F211	\$3,109.23
		8"	OLC-42508T211	\$3,953.08	OLC-42508F211	\$3,612.31
		10"	OLC-42510T211	\$5,085.38	OLC-42510F211	\$4,221.54
		12"	OLC-42512T211	\$6,363.38	OLC-42512F211	\$5,313.85
		14"			OLC-42514F211	
		16"				
		18"				

Oil Tube Stabilizer (Centraliser)	Rubber (1)		304SS (2)	
	6" x 2"	\$83.33		\$383.33
	8" x 2-1/2"	\$100.00		\$433.33
	10" x 1-1/2"	\$160.00		\$533.33
	12" x 3"	\$183.33		\$666.67
	14" x 3"	\$283.33		\$866.67



(1) For vertical installation, install rubber stabilizers at least one (1) every 12 metres

(2) For inclined/angle installation, install stainless steel stabilisers every 3 metres

Other grades of Stainless Steel available on request

Threaded 304SS column has Bronze column coupling. SS column coupling available as option



## Spare Parts - Oil Lube Column



Column only - Oil Lube		CARBON STEEL
Size	Column Sch 40 THREADED - 3 metres	
	Order Number	Price
4"	CPA-THR-1001-3000-1-1000	\$432
6"	CPA-THR-1501-3000-1-1000	\$660
8"	CPA-THR-2001-3000-1-1000	\$840
10"	CPA-THR-2501-3000-1-1000	\$1,104
12"	CPA-THR-3001-3000-1-1000	\$1,440
14"	CPA-THR-3501-3000-1-1000	\$1,616



Threaded Column Coupling		CARBON STEEL
Size	Order Number	Price
4"	CC-RHF-1001-1-1000	\$229.60
5"	CC-RHF-1251-1-1000	\$236.80
6"	CC-RHF-1501-1-1000	\$261.60
8"	CC-RHF-2001-1-1000	\$335
10"	CC-RHF-2501-1-1000	\$421
12"	CC-RHF-3001-1-1000	\$648.40

Right hand thread



Column only - Oil Lube		CARBON STEEL
Size	Column Sch 40 FLANGED - 3 metres	
	Order Number	Price
4"	CPA-FL-1001-3000-1-1000	\$552
6"	CPA-FL-1501-3000-1-1000	\$980
8"	CPA-FL-2001-3000-1-1000	\$1,216
10"	CPA-FL-2501-3000-1-1000	\$1,648
12"	CPA-FL-3001-3000-1-1000	\$1,988
14"	CPA-FL-3501-3000-1-1000	\$2,416

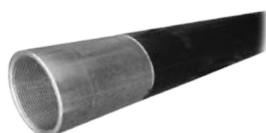
Note: Column supplied without bolts and nuts

Due to Stainless Steel column, flanged or threaded lasting longer when installed, pricing as replacement parts is available but not listed



Line Shaft 431SS (3 metres)		
Size	Order Number	Price
1"	LS-251-3000-LH-3-1000	\$313.80
1-1/4"	LS-321-3000-LH-3-1000	\$422.33
1-1/2"	LS-381-3000-LH-3-1000	\$555.33
1-3/4"	LS-441-3000-LH-3-1000	\$728
2"	LS-501-3000-LH-3-1000	\$1,030.40
2-1/4"	LS-571-3000-LH-3-1000	\$1,243.20

For Threaded and Flanged column  
Standard thread is Left Hand  
Right Hand thread is available



Oil Tube (1.5 metre)		CARBON STEEL
Size	Order Number	Price
2"	OT-50-1500-1-1000	\$240
2-1/2"	OT-63-1500-1-1000	\$290
3"	OT-75-1500-1-1000	\$350





## Spare Parts - Oil Lube Column



Line Shaft Coupling		CARBON STEEL
Size	Order Number	Price
1"	LSC-TH-LH-251-1-1000	\$85
1-1/4"	LSC-TH-LH-321-1-1000	\$105
1-1/2"	LSC-TH-LH-381-1000	\$145
1-3/4"	LSC-TH-LH-441-1-1000	\$235
2"	LSC-TH-LH-501-1-1000	\$325

Standard thread is Left Hand  
Right Hand thread is available



Bronze Bearing Connector		
Size	Order Number	Price
2" x 1"	OTB-CCW-501-251-3-1000	\$325
2" x 1-1/4"	OTB-CCW-501-321-3-1000	\$325
2-1/2" x 1-1/2"	OTB-CCW-631-381-3-1000	\$375
3" x 1-3/4"	OTB-CCW-751-441-3-1000	\$475

Connects oil tubes  
with shaft running in  
internal bronze bearing



Oil Tube Centraliser		RUBBER
Size	Order Number	Price
6" x 2"	OTC-150-501-1-1000	\$83
8" x 2-1/2"	OTC-200-631-1-1000	\$100
10" x 1-1/2"	OTC-250-631-1-1000	\$160
12" x 3"	OTC-300-631-1-1000	\$183
14" x 3"	OTC-350-751-1-1000	\$283

Oil tube stabilisers  
or centralisers are required  
to keep the oil tube centralised  
within the riser column



Oil Tube Centraliser		CARBON STEEL
Size	Order Number	Price
6" x 2"	OTC-150-501-3-1000	\$315
8" x 2-1/2"	OTC-200-631-3-1000	\$335
10" x 1-1/2"	OTC-250-631-3-1000	\$435
12" x 3"	OTC-300-631-3-1000	\$500
14" x 3"	OTC-350-751-3-1000	\$665



Oil Tube Centraliser		ST STL
Size	Order Number	Price
6" x 2"	OTC-150-501-4-1000	\$383
8" x 2-1/2"	OTC-200-631-4-1000	\$435
10" x 1-1/2"	OTC-250-631-4-1000	\$533
12" x 3"	OTC-300-631-4-1000	\$665
14" x 3"	OTC-350-751-4-1000	\$865



## Discharge Heads & Head Shafts



Head Size (inches)	Order Number	Notes	Standard Material (1) (2)		Additional price for:		500mm flanged column adaptor	
			Water Lube	Oil Lube	Head Shaft		Steel	304SS
			Surface Discharge	Surface Discharge	431 SS	316 SS		
10" x 4"	DA-100-10-25W-1C-1000	H4A (1)	\$2,613	\$2,267	\$433	\$467	\$300	\$667
12" x 6"	DA-150-12-25W-1C-1000	H4C (1)	\$3,867	\$3,867			\$433	\$1,000
16-1/2" x 6"	DA-150-16-25W-1C-1000	(1)	\$6,667	\$7,305	\$450	\$483	\$433	\$1,000
16-1/2" x 8"	DA-200-16-32W-1C-1000	H10E (1)	\$6,133	\$6,833	\$507	\$533	\$667	\$1,500
16-1/2" x 10"	DA-250-16-38W-1C-1000	(1)	\$6,933	\$7,833	\$507	\$533	\$833	\$1,833
24-1/2" x 10"	DA-250-24-38W-1C-1000	(2)	\$7,467	\$8,500	\$507	\$533	\$833	\$1,833
16-1/2" x 12"	DA-250-24-45W-1F-1000	(1)	\$7,867	\$8,500	\$567	\$600	\$1,333	\$2,833
24-1/2" x 12"	DA-250-24-45W-1F-1000	(1)	\$8,133	\$9,500	\$567	\$600	\$1,333	\$2,833
24-1/2" x 14"	DA-350-24-45W-1F-1000	(2)	\$9,867	\$10,600	\$833	\$867	\$1,600	\$3,000
24-1/2" x 16"	DA-400-24-45W-1F-1000	(2)	\$10,933	\$11,933	\$833	\$867	\$1,867	\$3,500
24-1/2" x 18"	DA-450-24-45W-1F-1000	(2)	\$11,733	\$12,993	\$833	\$867	\$2,000	\$4,167
31-1/2" x 18"	DA-450-31-45W-1F-1000	(2)	\$13,067	\$14,267	\$833	\$867	\$2,000	\$4,167
24-1/2" x 20"	DA-500-24-50W-1O-1000	(2)	\$15,467	\$16,333	\$833	\$867	\$2,667	\$5,500
31-1/2" x 20"	DA-500-31-50W-1O-1000	(2)	\$21,333	\$22,667	\$833	\$867	\$2,667	\$5,500

### Notes:

(1) Standard construction is cast iron, painted

(2) Standard construction is fabricated with Mild Steel plate and painted

Water lubricated only, pre-lube tank cannot be used with water cooled column discharge head

Pricing for underground discharge is Price On Application (POA)

Discharge Head materials to suit pump material, available in 316SS, Duplex and Super Duplex SS and other



## Motor Stools and Accessories



Motor Stool and Thrust Bearing Housing with flexible coupling and Non Reversing Ratchet (NRR) assembly						
Order Number	Limiting Speed (rpm)	Thrust Capacity (max.at Duty Point) (kgf)	Motor Frame size	Maximum Shaft Size (Inches)	Lube	Price
TBA1	3,600	1,000	Up to 225 Frame	1-1/4"	Grease	\$5,083.33
TBA1B	3,600	1,000	Up to 250 Frame	1-1/4"	Grease	\$6,053.33
TBA2	3,600	2,000	Up to 315 Frame	1-1/2"	Grease or Oil	\$9,850
TBA 3	3,600	3,000	Up to 315 Frame	2"	Grease or Oil	\$14,763.33
TBA4	3,000	4,000	Up to 355 Frame	2-1/4"	Oil	\$18,650.90

ACCESSORIES		
Order Number	Description	Price
AM	Airline Depth Gauge. 0-100 metres, 100mm diameter	\$179.27
AM	Airline fittings only	\$44.82
AM	Hand pump	\$67.23
AM	8mm airline tubing	\$4.48/M

OILER BOX Assembly		
Order Number	Description	Price
AM	45 litre Oiler Box Tank Assembly with dripper unit	\$1,800
AM	Stand for Oil Box	\$600

### Notes:

Refer to motor page for kW to Frame sizes

Thrust bearing capacity is a guide



## Electric motors, flange mount - EM Series



Output kW	Nom speed	Ph	V	Size	Flange	Shaft dia (mm)	Model	Price
7.5	2,920	3	400	132SA	B5	38	AM11041	\$937.14
11	2,950	3	400	160MA	B5	42	AM11042	\$1,522.86
15	2,950	3	400	160MB	B5	42	AM11043	\$1,725.71
	1,470	3	400	160L	B5	42	AM11044	\$1,765.71
18.5	2,950	3	400	160L	B5	42	AM11045	\$1,902.86
	1,470	3	400	180M	B5	48	AM11046	\$2,142.86
22	2,950	3	400	180M	B5	48	AM11047	\$2,242.86
	1,465	3	400	180L	B5	48	AM11048	\$2,297.14
30	2,955	3	400	200LA	B5	55	AM11049	\$3,002.86
	1,480	3	400	200LA	B5	55	AM11050	\$3,054.29
37	2,955	3	400	200IA	B5	55	AM11051	\$3,345.71
	1,475	3	400	225S	B5	60	AM11052	\$3,734.29
45	2,955	3	400	225M	B5	55	AM11053	\$3,882.86
	1,475	3	400	225M	B5	60	AM11054	\$4,197.14
	985	3	400	280S	B5	75	AM11055	\$6,082.86
55	2,970	3	400	250M	B5	60	AM11056	\$4,751.43
	1,480	3	400	250M	B5	65	AM11057	\$5,037.14
	985	3	400	280M	B5	75	AM11058	\$6,805.71
75	2,970	3	400	280S	B5	65	AM11059	\$5,917.14
	1,480	3	400	280S	B5	75	AM11060	\$6,445.71
	980	3	400	315S	B5	80	AM11061	\$12,345.71
90	2,970	3	400	280M	B5	65	AM11062	\$6,665.71
	1,485	3	400	280M	B5	75	AM11063	\$7,277.14
	980	3	400	315M	B5	80	AM11064	\$13,302.86
110	2,980	3	400	315S	B5	65	AM11065	\$12,102.86
	1,485	3	400	315S	B5	80	AM11066	\$11,594.29
	980	3	400	315LA	B5	80	AM11067	\$15,480.00
132	2,980	3	400	315M	B5	65	AM11068	\$13,365.71
	1,485	3	400	315M	B5	80	AM11069	\$12,457.14
	980	3	400	315LB	B5	80	AM11070	\$17,497.14
160	2,980	3	400	315LA	B5	65	AM11071	\$13,962.86
	1,485	3	400	315LA	B5	80	AM11072	\$14,151.43
	985	3	400	355MA	B5	100	AM11073	\$22,482.86
200	2,985	3	400	315LB	B5	65	AM11074	\$15,362.86
	1,490	3	400	315LB	B5	80	AM11075	\$15,794.29
	985	3	400	355MB	B5	100	AM11076	\$24,322.86
250	2,985	3	400	355M	B5	75	AM11077	\$24,371.43
	1,490	3	400	355M	B5	100	AM11078	\$23,560.00
	985	3	400	355LB	B5	100	AM11079	\$27,540.00
315	2,985	3	400	355LB	B5	75	AM11080	\$28,131.43
	1,490	3	400	355LB	B5	100	AM11081	\$27,382.66

### Notes:

400V Delta / 690V Star (4kW & above), 380-415V 50 Hz

Cast Iron construction

S1 continuous duty, amb up to 40°C, Class F insulation, Class B temp rise, IP55 protection

160 frame and above fitted with one thermistor

Complies with IE2 MEPS2 of AS/NZS 1359.5:2004



## Electric motors, foot mount - EM Series



Output kW	Nom speed	Ph	V	Size	Flange	Shaft dia (mm)	Model	Price
7.5	2,920	3	400	132SA	B3	38	AM11000	\$891.43
11	2,950	3	400	160MA	B3	42	AM11001	\$1,448.57
15	2,950	3	400	160MB	B3	42	AM11002	\$1,642.86
	1,470	3	400	160L	B3	42	AM11003	\$1,682.86
18.5	2,950	3	400	160L	B3	42	AM11004	\$1,811.43
	1,470	3	400	180M	B3	48	AM11005	\$2,040.00
22	2,950	3	400	180M	B3	48	AM11006	\$2,137.14
	1,465	3	400	180L	B3	48	AM11007	\$2,185.71
30	2,955	3	400	200LA	B3	55	AM11008	\$2,860.00
	1,480	3	400	200LA	B3	55	AM11009	\$2,908.57
37	2,955	3	400	200IA	B3	55	AM11010	\$3,185.71
	1,475	3	400	225S	B3	60	AM11011	\$3,554.29
45	2,955	3	400	225M	B3	55	AM11012	\$3,554.29
	1,475	3	400	225M	B3	60	AM11013	\$3,997.14
	985	3	400	280S	B3	75	AM11014	\$5,791.43
55	2,970	3	400	250M	B3	60	AM11015	\$4,522.86
	1,480	3	400	250M	B3	65	AM11016	\$4,794.14
	985	3	400	280M	B3	75	AM11017	\$6,480.00
75	2,970	3	400	280S	B3	65	AM11018	\$5,634.29
	1,480	3	400	280S	B3	75	AM11019	\$6,137.14
	980	3	400	315S	B3	80	AM11020	\$11,757.14
90	2,970	3	400	280M	B3	65	AM11021	\$6,345.71
	1,485	3	400	280M	B3	75	AM11022	\$6,931.43
	980	3	400	315M	B3	80	AM11023	\$12,668.57
110	2,980	3	400	315S	B3	65	AM11024	\$11,525.71
	1,485	3	400	315S	B3	80	AM11025	\$11,042.86
	980	3	400	315LA	B3	80	AM11026	\$14,742.86
132	2,980	3	400	315M	B3	65	AM11027	\$12,728.57
	1,485	3	400	315M	B3	80	AM11028	\$11,865.71
	980	3	400	315LB	B3	80	AM11029	\$16,662.86
160	2,980	3	400	315LA	B3	65	AM11030	\$13,297.14
	1,485	3	400	315LA	B3	80	AM11031	\$13,477.14
	985	3	400	355MA	B3	100	AM11032	\$21,957.14
200	2,985	3	400	315LB	B3	65	AM11033	\$14,631.43
	1,490	3	400	315LB	B3	80	AM11034	\$15,042.86
	985	3	400	355MB	B3	100	AM11035	\$23,165.71
250	2,985	3	400	355M	B3	75	AM11036	\$23,211.43
	1,490	3	400	355M	B3	100	AM11037	\$22,437.14
	985	3	400	355LB	B3	100	AM11038	\$26,228.57
315	2,985	3	400	355LB	B3	75	AM11039	\$26,788.57
	1,490	3	400	355LB	B3	100	AM11040	\$26,080.00

### Notes:

400V Delta / 690V Star (4kW & above), 380-415V 50 Hz

Cast Iron construction

S1 continuous duty, amb up to 40°C, Class F insulation, Class B temp rise, IP55 protection

Frame size 80 to 280 are fitted with detachable multi mount feet

160 frame and above fitted with one thermistor

Complies with IE2 MEPS2 of AS/NZS 1359.5:2004





## Right Angle turbine pump drive



### SPEED INCREASERS

Model	11:10 ratio		6:5 ratio		5:4 ratio	
	Order number	Price	Order number	Price	Order number	Price
30			AM11557	\$9,165.33		
40			AM11558	\$13,813.33		
60A	AM11573	\$11,554.67	AM11559	\$11,554.67	AM11549	\$11,554.67
80A	AM11574	\$12,861.33	AM11560	\$12,861.33	AM11550	\$12,861.33
100A	AM11575	\$12,973.33	AM11561	\$12,973.33	AM11551	\$12,973.33
125A	AM11576	\$13,906.67	AM11562	\$13,906.67	AM11552	\$13,906.67
150A	AM11577	\$16,968.00	AM11563	\$16,968.00	AM11553	\$21,000.00
200A	AM11578	\$23,314.67	AM11564	\$21,634.67		
250	AM11579	\$39,405.33	AM11565	\$32,890.67	AM11554	\$38,266.67
300	AM11580	\$42,336.00	AM11566	\$35,616.00	AM11555	\$41,197.33
350	AM11581	\$51,576.00	AM11567	\$41,925.33	AM11556	\$48,384.00
450A	AM11582	\$69,085.33	AM11568	\$67,666.67		
500A	AM11583	\$74,349.33	AM11569	\$70,821.33		
600A	AM11584	\$86,277.33	AM11570	\$81,442.67		
750A	AM11585	\$129,528.00	AM11571	\$117,301.33		
1000G	AM11586	\$173,245.33	AM11572	\$163,762.67		

Model	4:3 ratio		3:2 ratio		7:4 ratio	
	Order number	Price	Order number	Price	Order number	Price
30	AM11534	\$9,165.33	AM11518	\$11,293.33		
40	AM11535	\$13,813.33	AM11519	\$12,973.33		
60A	AM11536	\$11,554.67	AM11520	\$13,104.00	AM11514	\$14,541.33
80A	AM11537	\$12,861.33	AM11521	\$14,448.00	AM11515	\$14,952.00
100A	AM11538	\$12,973.33	AM11522	\$14,653.33	AM11516	\$15,120.00
125A	AM11539	\$13,906.67	AM11523	\$15,549.33		
150A	AM11540	\$16,968.00	AM11524	\$17,677.33		
200A	AM11541	\$21,634.67	AM11525	\$24,621.33	AM11517	\$25,162.67
250	AM11542	\$32,890.67	AM11526	\$37,296.00		
300	AM11543	\$35,616.00	AM11527	\$40,189.33		
350	AM11544	\$41,925.33	AM11528	\$47,208.00		
450A	AM11545	\$67,573.33	AM11529	\$66,397.33		
500A	AM11546	\$67,741.33	AM11530	\$74,349.33		
600A	AM11547	\$81,442.67	AM11531	\$87,360.00		
750A	AM11548	\$117,301.33	AM11532	\$123,442.67		
1000G			AM11533	\$173,245.33		

Example of ratios, a 2:1 ratio would have a horizontal speed of twice the vertical speed



## Right Angle turbine pump drive



### SPEED INCREASERS

Model	2:1 ratio		5:2 ratio		Special ratios	
	Order number	Price	Order number	Price	Order number	Price
30					<b>3:1 ratio</b>	
40					P3-31	\$29,500
60A	AM11506	\$14,541.33	AM11500	\$14,541.33	P5-31	\$41,300
80A	AM11507	\$14,952.00	AM11501	\$14,952.00	<b>3.5:1 ratio</b>	
100A	AM11508	\$15,120.00	AM11502	\$15,120.00	P3-351	\$29,500
125A					P5-351	\$41,300
150A	AM11509	\$21,000.00			<b>4:1 ratio</b>	
200A	AM11510	\$25,162.67			P3-41	\$29,500
250	AM11511	\$40,450.67	AM11503	\$40,450.67	P5-41	\$41,300
300	AM11512	\$43,605.33	AM11504	\$43,605.33	<b>Special Rotation</b>	
350	AM11513	\$49,896.00	AM11505	\$49,896.00	P3-SR	\$2,200.00
450A					P5-SR	\$2,900.00
500A					<b>Angle Installation</b>	
600A					Order number	Price adder
750A					30AI	NA
1000G					40AI	NA
					60AI	\$860.00
					80AI	\$860.00
					100AI	\$860.00
					125AI	\$860.00
					150AI	\$860.00
					200AI	\$1,250.00
					250AI	\$1,250.00
					300AI	\$1,250.00
					350AI	\$1,250.00
					P3AI-P5AI	no adder

#### Notes:

Cooling coils available on Models 40, 60A and 80A at additional cost  
Cooling coils are standard on Models 100A and above  
Non reverse clutches are standard on all gear box drives  
Example of ratios, a 2:1 ratio would have a horizontal speed of twice the vertical speed  
Standard rotation is CW horizontal and CCW vertical  
CW = clockwise, CCW = counter clockwise

**Standard rotation is:**  
CW horiz and CCW vertical

**Special rotations are:**  
CW horiz and CW vert  
CCW horiz and CCW vert  
CCW horiz and CW vert



## Right Angle turbine pump drive



### SPEED DECREASERS

Model	1:1 ratio		10:11 ratio		5:6 ratio	
	Order number	Price	Order number	Price	Order number	Price
30	AM11587	\$8,269.33			AM11615	\$9,165.33
40	AM11588	\$11,218.67			AM11616	\$13,813.33
60A	AM11589	\$11,554.67	AM11603	\$13,832.00	AM11617	\$13,496.00
80A	AM11590	\$12,861.33	AM11604	\$14,373.33	AM11618	\$14,877.33
100A	AM11591	\$12,973.33	AM11605	\$14,410.67	AM11619	\$14,653.33
125A	AM11592	\$13,869.33	AM11606	\$15,549.33	AM11620	\$14,746.67
150A	AM11593	\$16,968.00	AM11607	\$17,304.00	AM11621	\$18,946.67
200A	AM11594	\$20,533.33	AM11608	\$20,533.33	AM11622	\$23,146.67
250	AM11595	\$32,890.67	AM11609	\$39,274.67	AM11623	\$39,405.33
300	AM11596	\$35,616.00	AM11610	\$41,197.33	AM11624	\$42,336.00
350	AM11597	\$41,925.33	AM11611	\$47,469.33	AM11625	\$51,240.00
450A	AM11598	\$57,997.33			AM11626	\$69,253.33
500A	AM11599	\$60,106.67	AM11612	\$70,597.33	AM11627	\$74,349.33
600A	AM11600	\$73,210.67			AM11628	\$82,450.67
750A	AM11601	\$117,301.33	AM11613	\$129,528.00	AM11629	\$123,442.67
1000G	AM11602	\$152,002.67	AM11614	\$171,565.33	AM11630	\$197,829.33

Model	3:4 ratio		2:3 ratio		4:7 ratio	
	Order number	Price	Order number	Price	Order number	Price
30	AM11631	\$9,165.33	AM11638	\$9,165.33	AM11638	\$9,165.33
40	AM11632	\$13,813.33	AM11639	\$12,973.33	AM11639	\$11,965.33
60A	AM11633	\$15,120.00	AM11640	\$14,541.33	AM11640	\$12,525.33
80A	AM11634	\$16,090.67	AM11641	\$14,952.00	AM11641	\$13,738.67
100A	AM11635	\$16,128.00	AM11642	\$15,120.00	AM11642	\$13,906.67
125A	AM11636	\$18,106.67	AM11643	\$18,106.67	AM11643	\$15,288.00
150A	AM11637	\$21,000.00	AM11644	\$21,000.00	AM11644	\$21,000.00
200A			AM11645	\$24,621.33	AM11645	\$25,162.67
250			AM11646	\$40,450.67	AM11646	\$40,450.67
300			AM11647	\$43,605.33	AM11647	\$43,605.33
350			AM11648	\$49,896.00	AM11648	\$49,896.00
450A						
500A						
600A						
750A						
1000G						

Example of ratios, a 2:1 ratio would have a horizontal speed of twice the vertical speed



## Right Angle turbine pump drive



### SPEED INCREASERS

Model	1:2 ratio	
	Order number	Price
30	AM11649	\$9,165.33
40	AM11650	\$11,965.33
60A	AM11651	\$12,525.33
80A	AM11652	\$13,738.67
100A	AM11653	\$13,906.67
125A	AM11654	\$14,410.67
150A	AM11655	\$21,000.00
200A	AM11656	\$25,162.67
250	AM11657	\$39,405.33
300	AM11658	\$42,336.00
350	AM11659	\$51,576.00
450A		
500A		
600A		
750A		
1000G		

Model	Special Rotation	
	Order number	Price adder
30	30SR	\$800.00
40	40SR	\$800.00
60A	60SR	\$1,150.00
80A	80SR	\$1,150.00
100A	100SR	\$1,150.00
125A	125SR	\$1,150.00
150A	150SR	\$1,150.00
200A	200SR	\$1,550.00
250	250SR	\$1,550.00
300	300SR	\$1,550.00
350	350SR	\$1,550.00

**Standard rotation is:**  
CW horiz and CCW vertical

**Special rotations are:**  
CW horiz and CW vert  
CCW horiz and CCW vert  
CCW horiz and CW vert

Marine option	
Order number	Price adder
30MP	\$1,850.00
40MP	\$1,920.00
60MP	\$2,430.00
80MP	\$2,430.00
100MP	\$3,500.00
125MP	\$3,500.00
150MP	\$3,500.00
200MP	\$4,270.00
250MP	\$4,270.00
300MP	\$4,270.00
350MP	\$4,270.00

Angle Installation	
Order number	Price adder
30AI	NA
40AI	NA
60AI	\$860.00
80AI	\$860.00
100AI	\$860.00
125AI	\$860.00
150AI	\$860.00
200AI	\$1,250.00
250AI	\$1,250.00
300AI	\$1,250.00
350AI	\$1,250.00
P3AI-P5AI	no adder

#### Notes:

Cooling coils available on Models 40, 60A and 80A at additional cost  
Cooling coils are standard on Models 100A and above  
Non reverse clutches are standard on all gear box drives  
Example of ratios, a 2:1 ratio would have a horizontal speed of twice the vertical speed  
Standard rotation is CW horizontal and CCW vertical  
CW = clockwise, CCW = counter clockwise



## TS series - 5" and 6" submersible pump ends



5" 40 m³/h								
Model	Pump end		Motor			Cast Iron Price	Bronze Price	316SS Price
	Stg	Disc	kW	HP	Size			
TS-540/5	5	3"	5.5	7.5	6"	\$5,048	\$12,560	\$13,320
TS-540/7	7	3"	7.5	10	6"	\$6,728	\$16,960	\$17,960
TS-540/9	9	3"	9.3	12.5	6"	\$8,408	\$21,360	\$22,600
TS-540/11	11	3"	11	15	6"	\$10,088	\$25,760	\$27,240
TS-540/14	14	3"	15	20	6"	\$12,608	\$32,360	\$34,200
TS-540/18	18	3"	18.5	25	6"	\$15,968	\$41,160	\$43,480
TS-540/21	21	3"	22	30	6"	\$18,488	\$47,760	\$50,440
TS-540/25	25	3"	26	35	6"	\$21,848	\$56,560	\$59,720
TS-540/29	29	3"	30	40	6"	\$25,208	\$65,360	\$69,000
TS-540/36	36	3"	37	50	6"	\$31,088	\$80,760	\$85,240
TS-540/44	44	3"	45	60	6"	\$37,808	\$98,360	\$103,800

**Note\*:** the TS-540 is supplied without a Check Valve.



6" 17 m³/h								
Model	Pump end		Motor			Cast Iron Price	Bronze Price	316SS Price
	Stg	Disc	kW	HP	Size			
TS-617/7	7	3"	5.5	7.5	6"	\$6,728	\$16,960	\$17,690
TS-617/10	10	3"	7.5	10	6"	\$9,248	\$23,560	\$24,920
TS-617/12	12	3"	9.3	12.5	6"	\$10,928	\$27,960	\$29,560
TS-617/14	14	3"	11	15	6"	\$12,608	\$32,360	\$34,200
TS-617/19	19	3"	15	20	6"	\$16,808	\$43,360	\$45,800
TS-617/24	24	3"	18.5	25	6"	\$21,008	\$54,360	\$57,400
TS-617/29	29	3"	22	30	6"	\$25,208	\$65,360	\$69,000

### Notes:

Pump diameter with 1 x cable guard is: TS540 = 135mm. TS 617 = 168mm

Pump diameter with 2 x cable guard is: TS 617 = 168mm

Submersible Turbine Pumps have built in check valves unless noted

Pump and motors supplied separately, can be coupled together for additional price

Material build options: Nickel Alum Bronze, Duplex & Super Duplex stainless steel, Zeron 100





## TS series - 6" submersible pump ends



6" 40 m³/h								
Model	Pump end		Motor			Cast Iron Price	Bronze Price	316SS Price
	Stg	Disc	kW	HP	Size			
TS-640/5	5	3"	5.5	7.5	6"	\$3,570	NA	NA
TS-640/6	6	3"	7.5	10	6"	\$4,150		
TS-640/8	8	3"	9.3	12.5	6"	\$5,310		
TS-640/10	10	3"	11	15	6"	\$6,470		
TS-640/14	14	3"	15	20	6"	\$8,790		
TS-640/15	15	3"	18.5	25	6"	\$9,370		
TS-640/20	20	3"	22	30	6"	\$12,270		

6" 60 m³/h								
Model	Pump end		Motor			Cast Iron Price	Bronze Price	316SS Price
	Stg	Disc	kW	HP	Size			
TS-660/2	2	3"	5.5	7.5	6"	\$1,830	NA	NA
TS-660/3	3	3"	7.5	10	6"	\$2,410		
TS-660/4	4	3"	9.3	12.5	6"	\$2,990		
TS-660/5	5	3"	11	15	6"	\$3,570		
TS-660/6	6	3"	15	20	6"	\$4,150		
TS-660/7	7	3"	15	20	6"	\$4,730		
TS-660/8	8	3"	18.5	25	6"	\$5,310		
TS-660/10	10	3"	22	30	6"	\$6,470		
TS-660/12	12	3"	26	35	6"	\$7,630		
TS-660/14	14	3"	30	40	6"	\$8,790		

6" 85 m³/h *								
Model	Pump end		Motor			Cast Iron Price	Bronze Price	316SS Price
	Stg	Disc	kW	HP	Size			
TS-685/2	2	3"	5.5	7.5	6"	\$2,528	\$5,960	\$6,360
TS-685/3	3	3"	9.3	12.5	6"	\$3,368	\$8,160	\$8,680
TS-685/4	4	3"	11	15	6"	\$4,208	\$10,360	\$11,000
TS-685/5	5	3"	15	20	6"	\$5,048	\$12,560	\$13,320
TS-685/7	7	3"	18.5	25	6"	\$6,728	\$16,960	\$17,960
TS-685/8	8	3"	22	30	6"	\$7,568	\$19,160	\$20,280
TS-685/10	10	3"	26	35	6"	\$9,248	\$23,560	\$24,920
TS-685/11	11	3"	30	40	6"	\$10,088	\$25,760	\$27,240
TS-685/14	14	3"	37	50	6"	\$12,608	\$32,360	\$24,200
TS-685/17	17	3"	45	60	6"	\$15,128	\$38,960	\$41,160

**Note\*:** the TS-685 is supplied without a Check Valve.

### Notes:

Pump diameter with 1 x cable guard is: TS640 & TS660 = 145mm. TS 685 = 148mm

Pump diameter with 2 x cable guard is: TS640 & TS660 = 148mm. TS 685 = 151mm

Submersible Turbine Pumps have built in check valves unless noted

Pump and motors supplied separately, can be coupled together for additional price

Material build options: Nickel Alum Bronze, Duplex & Super Duplex stainless steel, Zeron 100



## TS series - 7" submersible pump ends



7" 60 m³/h								
Model	Pump end		Motor			Cast Iron Price	Bronze Price	316SS Price
	Stg	Disc	kW	HP	Size			
TS-760/1	1	4"	5.5	7.5	6"	\$1,688	\$3,760	\$4,040
TS-760/2	2	4"	7.5	10	6"	\$2,528	\$5,960	\$6,360
TS-760/3	3	4"	11	15	6"	\$3,368	\$8,160	\$8,680
TS-760/4	4	4"	15	20	6"	\$4,208	\$10,360	\$11,000
TS-760/5	5	4"	22	30	6"	\$5,048	\$12,560	\$13,320
TS-760/6	6	4"	26	35	6"	\$5,888	\$14,760	\$15,640
TS-760/7	7	4"	30	40	6"	\$6,728	\$16,960	\$17,960
TS-760/9	9	4"	37	50	6"	\$8,408	\$21,360	\$22,600
TS-760/11	11	4"	45	60	6"	\$10,088	\$25,760	\$27,240

7" 72 m³/h								
Model	Pump end		Motor			Cast Iron Price	Bronze Price	316SS Price
	Stg	Disc	kW	HP	Size			
TS-772/2	2	4"	7.5	10	6"	\$4,880	NA	NA
TS-772/3	3	4"	15	20	6"	\$5,920		
TS-772/4	4	4"	18.5	25	6"	\$6,960		
TS-772/5	5	4"	22	30	6"	\$8,000		
TS-772/6	6	4"	26	35	6"	\$9,040		
TS-772/8	8	4"	30	40	6"	\$11,120		
TS-772/9	9	4"	37	50	6"	\$12,160		
TS-772/11	11	4"	45	60	6"	\$14,240		

7" 100 m³/h								
Model	Pump end		Motor			Cast Iron Price	Bronze Price	316SS Price
	Stg	Disc	kW	HP	Size			
TS-7100/1	1	4"	9.3	12.5	6"	\$4,317	\$7,300	\$7,500
TS-7100/2	2	4"	18.5	25	6"	\$5,987	\$9,937	\$10,267
TS-7100/3	3	4"	26	35	6"	\$7,657	\$12,574	\$1,033
TS-7100/4	4	4"	37	50	6"	\$9,327	\$15,210	\$15,800
TS-7100/5	5	4"	45	60	6"	\$10,997	\$17,847	\$18,567

### Notes:

Pump diameter with 1 x cable guard is TS760 = 180mm. TS772 = 191mm. TS7100 = 190mm

Pump diameter with 2 x cable guard is TS760 = 185mm. TS772 = 195mm. TS7100 = 193mm

Submersible Turbine Pumps have built in check valves unless noted

Pump and motors supplied separately, can be coupled together for additional price

Material build options: Nickel Alum Bronze, Duplex & Super Duplex stainless steel, Zeron 100



## TS series - 8" submersible pump ends



8" 90 m³/h								
Model	Pump end		Motor			Cast Iron Price	Bronze Price	316SS Price
	Stg	Disc	kW	HP	Size			
TS-890/1	1	4"	7.5	10	6"	\$2,300	POA	POA
TS-890/2	2	4"	11	15	6"	\$3,080		
TS-890/3	3	4"	18.5	25	6"	\$3,860		
TS-890/4	4	4"	22	30	6"	\$4,640		
TS-890/6	6	4"	37	50	6"	\$6,200		
TS-890/8	8	4"	45	60	6"	\$7,760		
TS-890/10	10	4"	55	75	8"	\$9,320		
TS-890/13	13	4"	75	100	8"	\$11,660		



8" 150 m³/h								
Model	Pump end		Motor			Cast Iron Price	Bronze Price	316SS Price
	Stg	Disc	kW	HP	Size			
TS-8150/1	1	4"	15	20	6"	\$2,300	POA	POA
TS-8150/2	2	4"	22	30	6"	\$3,080		
TS-8150/3	3	4"	37	50	6"	\$3,860		
TS-8150/4	4	4"	45	60	6"	\$4,640		
TS-8150/5	5	4"	55	75	6"	\$5,420		
TS-8150/6	6	4"	75	100	8"	\$6,200		

### Notes:

Pump diameter with 1 x cable guard is; TS890 = 196mm. TS8150 = 200mm

Pump diameter with 2 x cable guard is; TS890 = 198mm. TS8150 = 205mm

Submersible Turbine Pumps have built in check valves unless noted

Pump and motors supplied separately, can be coupled together for additional price

Material build options: Nickel Alum Bronze, Duplex & Super Duplex stainless steel, Zeron 100



## TS series - 8" submersible pump ends



8" 200 m³/h								
Model	Pump end		Motor			Cast Iron Price	Bronze Price	316SS Price
	Stg	Disc	kW	HP	Size			
TS-8200/1	1	6"	15	20	6"	\$4,000	\$6,890	\$7,272
TS-8200/2	2	6"	30	40	6"	\$5,560	\$9,818	\$10,905
TS-8200/3	3	6"	45	60	6"	\$7,120	\$12,745	\$15,113
TS-8200/4	4	6"	55	75	8"	\$8,680	\$15,672	\$18,686
TS-8200/5	5	6"	75	100	8"	\$10,240	\$18,600	\$22,260
TS-8200/7	7	6"	93	125	8"	\$13,360	\$24,454	\$29,406



8" 230 m³/h *								
Model	Pump end		Motor			Cast Iron Price	Bronze Price	316SS Price
	Stg	Disc	kW	HP	Size			
TS-8230/1	1	6"	15	20	6"	\$4,543	\$7,256	\$7,966
TS-8230/2	2	6"	30	40	6"	\$6,630	\$10,506	\$11,540
TS-8230/3	3	6"	45	60	6"	\$8,716	\$13,756	\$15,113
TS-8230/5	5	6"	75	100	8"	\$12,890	\$20,256	\$22,260
TS-8230/6	6	6"	93	125	8"	\$14,976	\$23,506	\$25,833
TS-8230/7	7	6"	110	150	8"	\$17,063	\$26,756	\$29,406

**Note\*:** the TS-8230 is supplied without a Check Valve.

### Notes:

Pump diameter with 1 x cable guard is: TS8200 & TS8230 = 200mm

Pump diameter with 2 x cable guard is: TS8200 & TS8230 = 205mm

Submersible Turbine Pumps have built in check valves unless noted

Pump and motors supplied separately, can be coupled together for additional price

Material build options: Nickel Alum Bronze, Duplex & Super Duplex stainless steel, Zeron 100



## TS series - 10" submersible pump ends



10" 250 m³/h								
Model	Pump end		Motor			Cast Iron Price	Bronze Price	316SS Price
	Stg	Disc	kW	HP	Size			
TS-10250/1	1	6"	30	40	6"	\$4,243	\$10,575	\$10,923
TS-10250/2	2	6"	55	75	8"	\$6,116	\$14,673	\$15,230
TS-10250/3	3	6"	75	100	8"	\$7,989	\$18,772	\$19,538
TS-13250/4	4	6"	110	130	8"	\$9,861	\$22,870	\$23,846
TS-15250/5	5	6"	132	175	10"	\$11,734	\$26,969	\$28,153
TS-20250/6	6	6"	150	200	10"	\$13,607	\$31,067	\$32,461
TS-25250/7	7	6"	185	250	10"	\$15,480	\$35,166	\$36,769

10" 280 m³/h								
Model	Pump end		Motor			Cast Iron Price	Bronze Price	316SS Price
	Stg	Disc	kW	HP	Size			
TS-10280/1	1	6"	37	50	6"	\$4,246	\$13,748	\$12,400
TS-10280/2	2	6"	75	100	8"	\$6,116	\$19,076	\$19,800
TS-10280/3	3	6"	110	125	8"	\$7,989	\$24,404	\$25,400
TS-10280/4	4	6"	132	175	10"	\$9,861	\$29,732	\$31,000
TS-10280/5	5	6"	150	200	10"	\$11,734	\$35,060	\$36,600



10" 350 m³/h								
Model	Pump end		Motor			Cast Iron Price	Bronze Price	316SS Price
	Stg	Disc	kW	HP	Size			
TS-10350/1	1	8"	45	60	6"	\$4,243	\$10,575	\$10,923
TS-10350/2	2	8"	93	125	8"	\$6,116	\$14,673	\$15,230
TS-10350/3	3	8"	132	175	10"	\$7,989	\$18,772	\$19,538
TS-10350/4	4	8"	150	200	10"	\$9,861	\$22,870	\$23,846

### Notes:

Pump diameter with 1 x cable guard is; TS10250, TS10280 & TS10350 = 255mm

Pump diameter with 2 x cable guard is; TS10250, TS10280 & TS10350 = 263mm

Submersible Turbine Pumps have built in check valves unless noted

Pump and motors supplied separately, can be coupled together for additional price

Material build options: Nickel Alum Bronze, Duplex & Super Duplex stainless steel, Zeron 100



## TS series - 10" & 12" submersible pump ends



10" 440 m³/h *								
Model	Pump end		Motor			Cast Iron Price	Bronze Price	316SS Price
	Stg	Disc	kW	HP	Size			
TS-10440/2	2	8"	75	100	8"	\$9,800	\$19,648	\$20,020
TS-10440/3	3	8"	93	125	8"	\$13,000	\$24,868	\$25,640
TS-10440/4	4	8"	132	175	10"	\$16,200	\$30,088	\$31,260
TS-10440/5	5	8"	150	200	10"	\$19,400	\$35,308	\$36,880

**Note\*:** the TS-10440 is supplied without a Check Valve.

10" 550 m³/h *								
Model	Pump end		Motor			Cast Iron Price	Bronze Price	316SS Price
	Stg	Disc	kW	HP	Size			
TS-10550/1	1	8"	45	60	8"	\$6,000	\$12,233	POA
TS-10550/2	2	8"	93	125	10"	\$8,909	\$18,916	
TS-10550/3	3	8"	132	175	10"	\$11,818	\$25,600	
TS-10550/4	4	8"	185	250	10"	\$14,727	\$32,284	

**Note\*:** the TS-10550 is supplied without a Check Valve.



12" 650 m³/h								
Model	Pump end		Motor			Cast Iron Price	Bronze Price	316SS Price
	Stg	Disc	kW	HP	Size			
TS-12650/1	1	8"	93	125	8"	\$6,498	\$21,196	\$21,996
TS-12650/2	2	8"	185	250	10"	\$9,770	\$30,184	\$31,396

### Notes:

Pump diameter with 1 x cable guard is; TS10440 = 255mm. TS10550 = 258mm. TS12650 = 312mm

Pump diameter with 2 x cable guard is; TS10440 = 263mm. TS10550 = 266mm. TS12650 = 320mm

Submersible Turbine Pumps have built in check valves unless noted

Pump and motors supplied separately, can be coupled together for additional price

Material build options: Nickel Alum Bronze, Duplex & Super Duplex stainless steel, Zeron 100





## Submersible Riser Main Column



Column size (inches)	CARBON STEEL			
	Threaded Sch 40 Steel Pipe 3 metres		Flanged Sch 40 Steel Pipe 3 metres	
	Order Number	Price	Order Number	Price
4"	SRM-100I-T-1-1-1000	\$661.60	SRM-100I-F-1-2-1000	\$772
5"	SRM-125I-T-1-1-1000	\$752.80	SRM-125I-F-1-2-1000	\$936
6"	SRM-150I-T-1-1-1000	\$901.60	SRM-150I-F-1-2-1000	\$1,180
8"	SRM-200I-T-1-1-1000	\$1,175	SRM-200I-F-1-2-1000	\$1,476
10"	SRM-250I-T-1-1-1000	\$1,525	SRM-250I-F-1-2-1000	\$1,968
12"	SRM-300I-T-1-1-1000	\$2,088.40	SRM-300I-F-1-2-1000	\$2,348

Column size (inches)	304 STAINLESS STEEL			
	Threaded* 304SS Pipe 3 metres		Flanged 304SS Pipe 3 metres	
	Order Number	Price	Order Number	Price
4"	SRM-100I-T-1-6-1000	\$1,094	SRM-100I-F-2-2-1000	\$1,092.80
5"	SRM-125I-T-1-6-1000	\$1,634	SRM-125I-F-2-2-1000	\$1,268.20
6"	SRM-150I-T-1-6-1000	\$2,358	SRM-150I-F-2-2-1000	\$1,764
8"	SRM-200I-T-1-6-1000	\$4,150	SRM-200I-F-2-2-1000	\$2,418
10"	SRM-250I-T-1-6-1000	\$5,556	SRM-250I-F-2-2-1000	\$3,150
12"	SRM-300I-T-1-6-1000	POA	SRM-300I-F-2-2-1000	\$4,510

### Notes:

\* Threaded 304SS riser main column has a Bronze coupling to minimise thread galling.

Threaded steel riser column has a steel coupling

Each flange has a notch to allow the submersible cable to pass within flange diameter

Each 3 metre length of flanged column is supplied with;

(1) gasket

(1) bolt kit (bolt/nuts/washers)



## W series - 4" submersible pump ends



4" 5 m³/h						
Model	Pump end		Motor			Pump End Price
	Stages	Disc	kW	HP	Size	
W5/4	4	1.5"	0.37	0.50	4"	\$327
W5/6	6	1.5"	0.55	0.75	4"	\$402
W5/8	8	1.5"	0.75	1.00	4"	\$467
W5/12	12	1.5"	1.10	1.50	4"	\$603
W5/17	17	1.5"	1.50	2.00	4"	\$769
W5/21	21	1.5"	2.20	3.00	4"	\$724
W5/25	25	1.5"	2.20	3.00	4"	\$1,040
W5/33	33	1.5"	3.00	4.00	4"	\$1,317
W5/38	38	1.5"	4.00	5.50	4"	\$2,237
W5/44	44	1.5"	4.00	5.50	4"	\$2,548
W5/52	52	1.5"	5.50	7.50	4"	\$2,961

4" 8 m³/h						
Model	Pump end		Motor			Pump End Price
	Stages	Disc	kW	HP	Size	
W8/5	5	2"	0.75	1.00	4"	\$703
W8/7	7	2"	1.10	1.50	4"	\$829
W8/10	10	2"	1.50	2.00	4"	\$1,014
W8/12	12	2"	2.20	3.00	4"	\$1,140
W8/15	15	2"	2.20	3.00	4"	\$1,334
W8/18	18	2"	3.00	4.00	4"	\$1,518
W8/21	21	2"	4.00	5.50	4"	\$1,702
W8/25	25	2"	4.00	5.50	4"	\$1,959
W8/30	30	2"	5.50	7.50	4"	\$2,275
W8/37	37	2"	5.50	7.50	4"	\$2,706
W8/44	44	2"	7.50	10.00	4"	\$3,613
W8/50	50	2"	7.50	10.00	4"	\$4,050

### Notes:

304SS construction

W series pumps can be supplied with motors either Standard or 316SS construction

4" motors available in 2 wire 1 phase to 1.5 kW or 3 wire up to 2.2kW & 3 phase

Pump and motors supplied separately, can be coupled together for additional price

316SS (N) construction available on request, add N onto model number

Discharge is BSP, NPT available



## W series - 6" submersible pump ends



6" 17 m³/h						
Model	Pump end		Motor			Pump End Price
	Stages	Disc	kW	HP	Size	
W17/1	1	2.5"	0.55	0.75	4"	\$872
W17/2	2	2.5"	1.1	1.5	4"	\$1,046
W17/3	3	2.5"	2.2	3	4"	\$1,219
W17/4	4	2.5"	2.2	3	4"	\$1,393
W17/5	5	2.5"	3	4	4"	\$1,566
W17/6	6	2.5"	4	5.5	4"	\$1,740
W17/7	7	2.5"	4	5.5	4"	\$1,913
W17/8	8	2.5"	5.5	7.5	4"	\$2,087
W17/9	9	2.5"	5.5	7.5	4"	\$2,260
W17/10	10	2.5"	5.5	7.5	4"	\$2,434
W17/11	11	2.5"	7.5	10	4"	\$2,607
W17/12	12	2.5"	7.5	10	4"	\$2,781
W17/13	13	2.5"	7.5	10	4"	\$2,954
W17/14	14	2.5"	9.3	12.5	6"	\$3,128
W17/15	15	2.5"	9.3	12.5	6"	\$3,301
W17/16	16	2.5"	9.3	12.5	6"	\$3,475
W17/17	17	2.5"	9.3	12.5	6"	\$3,648
W17/18	18	2.5"	11	15	6"	\$3,397
W17/19	19	2.5"	11	15	6"	\$3,551
W17/20	20	2.5"	11	15	6"	\$3,706
W17/22	22	2.5"	15	17.5	6"	\$4,124
W17/25	25	2.5"	15	20	6"	\$4,300
W17/26	26	2.5"	15	20	6"	\$4,445
W17/27	27	2.5"	15	20	6"	\$4,590
W17/29	29	2.5"	18.5	25	6"	\$4,879
W17/31	31	2.5"	18.5	25	6"	\$5,168
W17/33	33	2.5"	18.5	25	6"	\$5,457
W17/35	35	2.5"	22	30	6"	\$5,746
W17/37	37	2.5"	22	30	6"	\$6,036
W17/39	39	2.5"	22	30	6"	\$6,072
W17/45	45	2.5"	30	35	6"	\$6,905
W17/48	48	2.5"	30	35	6"	\$7,321
W17/55	55	2.5"	30	35	6"	\$7,679
W17/60	60	2.5"	30	35	6"	\$8,321

### Notes:

304SS construction

W series pumps can be supplied with motors either Standard or 316SS construction

4" motors available in 2 wire 1 phase to 1.5 kW or 3 wire up to 2.2kW & 3 phase

Pump and motors supplied separately, can be coupled together for additional price

316SS (N) construction available on request, add N onto model number

Discharge is BSP, NPT available



## W series - 6" submersible pump ends



6" 30 m³/h						
Model	Pump end		Motor			Pump End Price
	Stages	Disc	kW	HP	Size	
W30/2	2	3"	2.2	3	4"	\$1,742
W30/3	3	3"	3	4	4"	\$2,002
W30/4	4	3"	4	5.5	4"	\$2,585
W30/5	5	3"	4	5.5	4"	\$2,895
W30/6	6	3"	5.5	7.5	4"	\$3,193
W30/7	7	3"	5.5	7.5	4"	\$3,490
W30/8	8	3"	7.5	10	6"	\$3,800
W30/9	9	3"	9.3	12.5	6"	\$4,084
W30/10	10	3"	9.3	12.5	6"	\$4,388
W30/11	11	3"	9.3	12.5	6"	\$4,685
W30/12	12	3"	11	15	6"	\$4,983
W30/13	13	3"	11	15	6"	\$5,306
W30/14	14	3"	15	20	6"	\$5,590
W30/15	15	3"	15	20	6"	\$5,900
W30/16	16	3"	15	20	6"	\$6,185
W30/17	17	3"	15	20	6"	\$6,501
W30/18	18	3"	18.5	25	6"	\$6,786
W30/19	19	3"	18.5	25	6"	\$8,271
W30/20	20	3"	18.5	25	6"	\$8,618
W30/21	21	3"	18.5	25	6"	\$8,972
W30/22	22	3"	22	30	6"	\$9,319
W30/23	23	3"	22	30	6"	\$9,673
W30/24	24	3"	22	30	6"	\$10,020
W30/25	25	3"	22	30	6"	\$10,360
W30/26	26	3"	22	30	6"	\$10,721
W30/27	27	3"	26	35	6"	\$11,076
W30/28	28	3"	26	35	6"	\$11,423
W30/29	29	3"	26	35	6"	\$11,769
W30/30	30	3"	26	35	6"	\$12,131
W30/32	32	3"	30	40	6"	\$12,817
W30/35	35	3"	30	40	6"	\$13,888
W30/39	39	3"	37	50	6"	\$15,317
W30/43	43	3"	37	50	6"	\$18,254
W30/46	46	3"	45	60	6"	\$20,503
W30/49	49	3"	45	60	6"	\$22,884

### Notes:

304SS construction

W series pumps can be supplied with motors either Standard or 316SS construction

Pump and motors supplied separately, can be coupled together for additional price

316SS (N) construction available on request, add N onto model number

Discharge is BSP, NPT available



## W series - 6" submersible pump ends



6" 46 m <sup>3</sup> /h						
Model	Pump end		Motor			Pump End Price
	Stages	Disc	kW	HP	Size	
W46/2	2	4"	3	4	4"	\$2,307
W46/3	3	4"	5.5	7.5	4"	\$2,639
W46/4	4	4"	7.5	10	6"	\$2,948
W46/5	5	4"	7.5	10	6"	\$2,805
W46/6	6	4"	9.3	12.5	6"	\$3,089
W46/7	7	4"	11	15	6"	\$3,962
W46/8	8	4"	15	20	6"	\$4,285
W46/9	9	4"	15	20	6"	\$4,614
W46/10	10	4"	15	20	6"	\$4,937
W46/11	11	4"	18.5	25	6"	\$5,267
W46/12	12	4"	18.5	25	6"	\$5,597
W46/13	13	4"	22	30	6"	\$5,926
W46/14	14	4"	22	30	6"	\$6,256
W46/15	15	4"	22	30	6"	\$6,572
W46/16	16	4"	26	35	6"	\$6,896
W46/17	17	4"	26	35	6"	\$7,219
W46/18	18	4"	30	40	6"	\$7,542
W46/19	19	4"	30	40	6"	\$7,878
W46/20	20	4"	30	40	6"	\$8,201
W46/21	21	4"	37	50	6"	\$8,524
W46/22	22	4"	37	50	6"	\$8,854
W46/23	23	4"	37	50	6"	\$9,177
W46/24	24	4"	37	50	6"	\$9,513
W46/26	26	4"	45	60	6"	\$13,238
W46/28	28	4"	45	60	6"	\$14,148
W46/30	30	4"	45	60	6"	\$15,060
W46/33	33	4"	55	75	8"	\$16,426
W46/35	35	4"	55	75	8"	\$17,337
W46/37	37	4"	75	100	8"	\$18,248

### Notes:

304SS construction

W series pumps can be supplied with motors either Standard or 316SS construction

Standard discharge is Rp 4 = 4" BSPF, optional 3" BSPF available

Pump and motors supplied separately, can be coupled together for additional price

316SS (N) construction available on request, add N onto model number

Discharge is BSP, NPT available



## W series - 6" submersible pump ends



6" 60 m³/h						
Model	Pump end		Motor			Pump End Price
	Stages	Disc	kW	HP	Size	
W60/1	1	4"	2.2	3	4"	\$2,081
W60/2	2	4"	4	5.5	4"	\$2,081
W60/3	3	4"	5.5	7.5	4"	\$2,378
W60/4	4	4"	7.5	10	6"	\$2,663
W60/5	5	4"	9.3	12.5	6"	\$2,953
W60/6	6	4"	11	15	6"	\$3,238
W60/7	7	4"	15	17.5	6"	\$4,013
W60/8	8	4"	15	20	6"	\$4,336
W60/9	9	4"	18.5	25	6"	\$4,666
W60/10	10	4"	18.5	25	6"	\$4,996
W60/11	11	4"	22	30	6"	\$5,325
W60/12	12	4"	22	30	6"	\$5,648
W60/13	13	4"	26	35	6"	\$5,971
W60/14	14	4"	26	35	6"	\$6,301
W60/15	15	4"	26	35	6"	\$6,631
W60/16	16	4"	30	40	6"	\$6,954
W60/17	17	4"	30	40	6"	\$7,283
W60/18	18	4"	37	50	6"	\$7,606
W60/19	19	4"	37	50	6"	\$7,936
W60/20	20	4"	37	50	6"	\$8,259
W60/21	21	4"	37	50	6"	\$9,842
W60/22	22	4"	45	60	6"	\$10,252

### Notes:

304SS construction

W series pumps can be supplied with motors either Standard or 316SS construction

Standard discharge is Rp 4 = 4" BSPF, optional 3" BSPF available

Pump and motors supplied separately, can be coupled together for additional price

316SS (N) construction available on request, add N onto model number

Discharge is BSP, NPT available





## W series - 8" submersible pump ends



8" 77 m³/h						
Model	Pump end		Motor			Pump End Price
	Stages	Disc	kW	HP	Size	
W77/1	1	4"	5.5	7.5	4"	\$3,873
W77/2	2	4"	7.5	10	6"	\$4,474
W77/3	3	4"	11	15	6"	\$5,087
W77/4	4	4"	15	20	6"	\$5,688
W77/5	5	4"	18.5	25	6"	\$6,288
W77/6	6	4"	22	30	6"	\$6,889
W77/7	7	4"	26	35	6"	\$7,493
W77/8	8	4"	30	40	6"	\$8,102
W77/9	9	4"	30	40	6"	\$8,703
W77/10	10	4"	37	50	6"	\$9,316
W77/11	11	4"	37	50	6"	\$9,921
W77/12	12	4"	45	60	6"	\$10,935
W77/13	13	4"	55	75	8"	\$11,534
W77/14	14	4"	55	75	8"	\$12,132
W77/15	15	4"	55	75	8"	\$12,731
W77/16	16	4"	75	100	8"	\$13,329
W77/17	17	4"	75	100	8"	\$13,928
W77/18	18	4"	75	100	8"	\$14,527
W77/19	19	4"	75	100	8"	\$15,125
W77/20	20	4"	75	100	8"	\$15,724

### Notes:

304SS construction

W series pumps can be supplied with motors either Standard or 316SS construction

Standard discharge is Rp 4 = 4"BSPF, optional 5" BSPF available

Pump and motors supplied separately, can be coupled together for additional price

316SS (N) construction available on request, add N onto model number

Discharge is BSP, NPT available



## W series - 8" submersible pump ends



8" 95 m³/h						
Model	Pump end		Motor			Pump End Price
	Stages	Disc	kW	HP	Size	
W95/1	1	6"	5.5	7.5	4"	\$3,605
W95/2	2	6"	9.3	12.5	6"	\$4,164
W95/3	3	6"	15	17.5	6"	\$4,718
W95/4	4	6"	18.5	25	6"	\$5,277
W95/5	5	6"	22	30	6"	\$5,837
W95/6	6	6"	26	35	6"	\$6,390
W95/7	7	6"	30	40	6"	\$6,950
W95/8	8	6"	37	50	6"	\$7,510
W95/9	9	6"	37	50	6"	\$9,186
W95/10	10	6"	45	60	6"	\$9,826
W95/11	11	6"	55	75	8"	\$10,465
W95/12	12	6"	55	75	8"	\$11,293
W95/13	13	6"	55	75	8"	\$11,921
W95/14	14	6"	75	85	8"	\$12,550
W95/15	15	6"	75	100	8"	\$13,178
W95/16	16	6"	75	100	8"	\$13,806
W95/17	17	6"	75	100	8"	\$14,435
W95/18	18	6"	93	125	8"	\$15,063
W95/19	19	6"	93	125	8"	\$15,692
W95/20	20	6"	93	125	8"	\$16,320

### Notes:

304SS construction

W series pumps can be supplied with motors either Standard or 316SS construction

Standard discharge is Rp 6 = "BSPF, optional 5" BSPF available

Pump and motors supplied separately, can be coupled together for additional price

316SS (N) construction available on request, add N onto model number

Discharge is BSP, NPT available



## W series - 10" submersible pump ends



10" 125 m³/h						
Model	Pump end		Motor			Pump End Price
	Stages	Disc	kW	HP	Size	
W125/1-A	1	6"	7.5	10	6"	\$3,019
W125/1	1	6"	11	15	6"	\$3,019
W125/2-AA	2	6"	15	17.5	6"	\$3,476
W125/2-A	2	6"	18.5	25	6"	\$3,476
W125/2	2	6"	22	30	6"	\$3,476
W125/3-AA	3	6"	22	30	6"	\$4,327
W125/3-A	3	6"	26	35	6"	\$4,327
W125/3	3	6"	30	40	6"	\$4,327
W125/4-AA	4	6"	37	50	6"	\$4,830
W125/4-A	4	6"	37	50	6"	\$4,830
W125/4	4	6"	37	50	6"	\$4,830
W125/5-AA	5	6"	45	60	6"	\$5,333
W125/5-A	5	6"	45	60	6"	\$5,333
W125/5	5	6"	55	75	8"	\$5,333
W125/6-AA	6	6"	55	75	8"	\$6,484
W125/6-A	6	6"	55	75	8"	\$6,484
W125/6	6	6"	75	100	8"	\$6,484
W125/7-AA	7	6"	75	100	8"	\$7,043
W125/7-A	7	6"	75	100	8"	\$7,043
W125/7	7	6"	75	100	8"	\$7,043
W125/8-AA	8	6"	75	100	8"	\$7,602
W125/8-A	8	6"	75	100	8"	\$7,602
W125/8	8	6"	75	100	8"	\$7,602
W125/9-AA	9	6"	93	125	8"	\$8,161
W125/9-A	9	6"	93	125	8"	\$8,161
W125/9	9	6"	93	125	8"	\$8,161
W125/10-AA	10	6"	93	125	8"	\$8,720
W125/10-A	10	6"	93	125	8"	\$8,720
W125/10	10	6"	93	125	8"	\$8,720
W125/11	11	6"	110	150	8"	\$9,279
W125/12	12	6"	132	175	10"	\$9,838
W125/13	13	6"	132	175	10"	\$10,397
W125/14	14	6"	150	200	10"	\$10,956
W125/15	15	6"	150	200	10"	\$11,515
W125/16	16	6"	185	250	10"	\$12,074
W125/17	17	6"	185	250	10"	\$12,633

### Notes:

304SS construction

W series pumps can be supplied with motors either Standard or 316SS construction

Pump and motors supplied separately, can be coupled together for additional price

316SS (N) construction available on request, add N onto model number

Discharge is BSP, NPT available



## W series - 10" submersible pump ends



10" 160 m³/h						
Model	Pump end		Motor			Pump End Price
	Stages	Disc	kW	HP	Size	
W160/1-A	1	6"	9.3	12.5	6"	\$3,193
W160/1	1	6"	15	17.5	6"	\$3,193
W160/2-AA	2	6"	18.5	25	6"	\$3,676
W160/2-A	2	6"	22	30	6"	\$3,676
W160/2	2	6"	30	35	6"	\$3,676
W160/3-AA	3	6"	30	40	6"	\$4,507
W160/3-A	3	6"	37	50	6"	\$4,507
W160/3	3	6"	37	50	6"	\$4,507
W160/4-AA	4	6"	45	60	6"	\$5,031
W160/4-A	4	6"	45	60	6"	\$5,031
W160/4	4	6"	55	75	8"	\$5,031
W160/5-AA	5	6"	55	75	8"	\$5,555
W160/5-A	5	6"	55	75	8"	\$5,555
W160/5	5	6"	75	100	8"	\$5,555
W160/6-AA	6	6"	75	100	8"	\$6,079
W160/6-A	6	6"	75	100	8"	\$6,079
W160/6	6	6"	75	100	8"	\$6,079
W160/7-AA	7	6"	75	100	8"	\$7,203
W160/7-A	7	6"	93	125	8"	\$7,203
W160/7	7	6"	93	125	8"	\$7,203
W160/8-AA	8	6"	93	125	8"	\$7,775
W160/8-A	8	6"	93	125	8"	\$7,775
W160/8	8	6"	93	125	8"	\$7,775
W160/9-AA	9	6"	110	150	8"	\$8,346
W160/9-A	9	6"	110	150	8"	\$8,346
W160/9	9	6"	110	150	8"	\$8,346
W160/10-AA	10	6"	110	150	8"	\$8,918
W160/10-A	10	6"	132	175	10"	\$8,918
W160/10	10	6"	132	175	10"	\$8,918
W160/11	11	6"	132	175	10"	\$10,438
W160/12	12	6"	150	200	10"	\$11,067
W160/13	13	6"	185	250	10"	\$11,696
W160/14	14	6"	185	250	10"	\$12,325
W160/15	15	6"	185	250	10"	\$12,954

### Notes:

304SS construction

W series pumps can be supplied with motors either Standard or 316SS construction

Pump and motors supplied separately, can be coupled together for additional price

316SS (N) construction available on request, add N onto model number

Discharge is BSP, NPT available



## W series - 10" submersible pump ends



10" 215 m³/h						
Model	Pump end		Motor			Pump End Price
	Stages	Disc	kW	HP	Size	
W215/1-A	1	6"	15	20	6"	\$6,641
W215/1	1	6"	18.5	25	6"	\$6,641
W215/2-AA	2	6"	30	40	6"	\$7,647
W215/2-A	2	6"	37	50	6"	\$7,647
W215/2	2	6"	45	60	6"	\$7,647
W215/3-AA	3	6"	55	75	8"	\$8,653
W215/3-A	3	6"	55	75	8"	\$8,653
W215/3	3	6"	75	100	8"	\$8,653
W215/4-AA	4	6"	75	100	8"	\$9,659
W215/4-A	4	6"	75	100	8"	\$9,659
W215/4	4	6"	75	100	8"	\$9,659
W215/5-AA	5	6"	93	125	8"	\$10,666
W215/5-A	5	6"	93	125	8"	\$10,666
W215/5	5	6"	93	125	8"	\$10,666
W215/6-AA	6	6"	110	150	8"	\$11,672
W215/6-A	6	6"	110	150	8"	\$11,672
W215/6	6	6"	110	150	8"	\$11,672
W215/7-AA	7	6"	132	175	10"	\$12,678
W215/7-A	7	6"	132	175	10"	\$12,678
W215/7	7	6"	132	175	10"	\$12,678
W215/8-AA	8	6"	150	200	10"	\$13,684
W215/8-A	8	6"	150	200	10"	\$13,684
W215/8	8	6"	150	200	10"	\$13,684
W215/9-AA	9	6"	185	250	10"	\$14,690
W215/9-A	9	6"	185	250	10"	\$14,690
W215/9	9	6"	185	250	10"	\$14,690
W215/10-AA	10	6"	185	250	10"	\$15,696
W215/10-A	10	6"	185	250	10"	\$15,696
W215/10	10	6"	185	250	10"	\$15,696

### Notes:

304SS construction

W series pumps can be supplied with motors either Standard or 316SS construction

Pump and motors supplied separately, can be coupled together for additional price

316SS (N) construction available on request, add N onto model number

Discharge is BSP, NPT available



## M6 series - 6" submersible motors



### 304SS Standard construction

Model	kW	HP	Description	Price
MA-06B-5.5-2	5.5	7.5	6" motor, 380-415V, 50Hz, DOL, 2P	\$1,966
MA-06B-7.5-2	7.5	10	6" motor, 380-415V, 50Hz, DOL, 2P	\$2,062
MA-06B-9.3-2	9.3	12.5	6" motor, 380-415V, 50Hz, DOL, 2P	\$2,177
MA-06B-011-2	11	15	6" motor, 380-415V, 50Hz, DOL, 2P	\$2,477
MA-06B-015-2	15	20	6" motor, 380-415V, 50Hz, DOL, 2P	\$2,639
MA-06B-018-2	18.5	25	6" motor, 380-415V, 50Hz, DOL, 2P	\$3,142
MA-06B-022-2	22	30	6" motor, 380-415V, 50Hz, DOL, 2P	\$3,390
MA-06B-026-2	26	35	6" motor, 380-415V, 50Hz, DOL, 2P	\$3,743
MA-06B-030-2	30	40	6" motor, 380-415V, 50Hz, DOL, 2P	\$4,253
MA-06B-037-2	37	50	6" motor, 380-415V, 50Hz, DOL, 2P	\$5,952
MA-06A-045-2	45	60	6" motor, 380-415V, 50Hz, DOL, 2P	\$7,177

Motor lead length: 3 metres

### 316SS construction

Model	kW	HP	Description	Price
MA-06B-5.5-2	5.5	7.5	6" motor, 380-415V, 50Hz, DOL, 2P	\$3,582
MA-06B-7.5-3	7.5	10	6" motor, 380-415V, 50Hz, DOL, 2P	\$3,734
MA-06B-9.3-3	9.3	12.5	6" motor, 380-415V, 50Hz, DOL, 2P	\$3,912
MA-06B-011-3	11	15	6" motor, 380-415V, 50Hz, DOL, 2P	\$3,973
MA-06B-015-3	15	20	6" motor, 380-415V, 50Hz, DOL, 2P	\$4,880
MA-06B-018-3	18.5	25	6" motor, 380-415V, 50Hz, DOL, 2P	\$5,423
MA-06B-022-3	22	30	6" motor, 380-415V, 50Hz, DOL, 2P	\$5,802
MA-06B-026-3	26	35	6" motor, 380-415V, 50Hz, DOL, 2P	\$6,878
MA-06B-030-3	30	40	6" motor, 380-415V, 50Hz, DOL, 2P	\$7,308
MA-06B-037-3	37	50	6" motor, 380-415V, 50Hz, DOL, 2P	\$8,585
MA-06A-045-3	45	60	6" motor, 380-415V, 50Hz, DOL, 2P	\$9,623

Motor lead length: 3 metres

### Notes:

Motors are 380-415V,  $\pm 10\%$ , 50hz, 2 pole, DOL - Direct On Line

Star Delta, 6 lead motors are available with price adder

6" motors are water filled and water lubricated

Silicone Carbide mechanical seal assembly fitted as standard

304SS construction are 304 upper and lower end bells and stator shell

316SS construction are 316 upper and lower end bells and stator shell

904L/Duplex SS and Super Duplex SS constructions available to order

Windings are PVC-PE, high temp windings of PE2+PA available with price adder

Motor/pump flange and shaft/spline conform to NEMA standard

Motors are VFD compatible

Longer lead lengths can be supplied with price adder

690V and 1,000V 50 Hz windings are available to order





## M8 series - 8" submersible motors



### Standard construction

Model	kW	HP	Description	Price
MA-08C-022-1	22	30	8" motor, 380-415V, 50Hz, DOL, 2P	POA
MA-08C-026-1	26	35	8" motor, 380-415V, 50Hz, DOL, 2P	POA
MA-08C-030-1	30	40	8" motor, 380-415V, 50Hz, DOL, 2P	\$6,442
MA-08A-037-1	37	50	8" motor, 380-415V, 50Hz, DOL, 2P	\$6,807
MA-08A-045-1	45	60	8" motor, 380-415V, 50Hz, DOL, 2P	\$8,206
MA-08A-055-1	55	75	8" motor, 380-415V, 50Hz, DOL, 2P	\$9,843
MA-08A-066-1	66	90	8" motor, 380-415V, 50Hz, DOL, 2P	POA
MA-08A-075-1	75	100	8" motor, 380-415V, 50Hz, DOL, 2P	\$11,299
MA-08A-093-1	93	125	8" motor, 380-415V, 50Hz, DOL, 2P	\$13,779
MA-08A-110-1	110	150	8" motor, 380-415V, 50Hz, DOL, 2P	\$16,078

Motor lead length: 3 metres 22-30kW, 5 metres 37-110kW

### 316SS construction

Model	kW	HP	Description	Price
MA-08C-022-3	22	30	8" motor, 380-415V, 50Hz, DOL, 2P	POA
MA-08C-026-3	26	35	8" motor, 380-415V, 50Hz, DOL, 2P	POA
MA-08C-030-3	30	40	8" motor, 380-415V, 50Hz, DOL, 2P	\$11,697
MA-08A-037-3	37	50	8" motor, 380-415V, 50Hz, DOL, 2P	\$12,408
MA-08A-045-3	45	60	8" motor, 380-415V, 50Hz, DOL, 2P	\$14,993
MA-08A-055-3	55	75	8" motor, 380-415V, 50Hz, DOL, 2P	\$15,398
MA-08A-066-3	66	90	8" motor, 380-415V, 50Hz, DOL, 2P	POA
MA-08A-075-3	75	100	8" motor, 380-415V, 50Hz, DOL, 2P	\$15,424
MA-08A-093-3	93	125	8" motor, 380-415V, 50Hz, DOL, 2P	\$18,773
MA-08A-110-3	110	150	8" motor, 380-415V, 50Hz, DOL, 2P	\$21,236

Motor lead length: 3 metres 22-30kW, 5 metres 37-110kW

### Notes:

Motors are 380-415V,  $\pm 10\%$ , 50hz, 2 pole. DOL - Direct On Line

Star Delta, 6 lead motors are available with price adder

8" motors are water filled and water lubricated

Silicone Carbide mechanical seal assembly fitted as standard

Standard construction are cast iron upper and lower end bells and 304 stator shell

316SS construction are 316 upper and lower end bells and stator shell

904L/Duplex SS and Super Duplex SS constructions available to order

Windings are PVC-PE, high temp windings of PE2+PA available with price adder

Motor/pump flange and shaft/spline conform to NEMA standard

Motors are VFD compatible

Longer lead lengths can be supplied with price adder

690V and 1,000V 50 Hz windings are available to order

4 pole motors are available to order



## M10 series - 10" submersible motors



### Standard construction

Model	kW	HP	Description	Price
MA-10A-055-1	55	75	10" motor, 380-415V, 50Hz, DOL, 2P	POA
MA-10A-066-1	66	90	10" motor, 380-415V, 50Hz, DOL, 2P	POA
MA-10A-075-1	75	100	10" motor, 380-415V, 50Hz, DOL, 2P	\$17,169
MA-10A-093-1	93	125	10" motor, 380-415V, 50Hz, DOL, 2P	\$18,670
MA-10A-110-1	110	150	10" motor, 380-415V, 50Hz, DOL, 2P	\$21,489
MA-10A-132-1	132	175	10" motor, 380-415V, 50Hz, DOL, 2P	\$22,840
MA-10A-150-1	150	200	10" motor, 380-415V, 50Hz, DOL, 2P	\$23,352
MA-10A-165-1	165	225	10" motor, 380-415V, 50Hz, DOL, 2P	POA
MA-10A-185-1	185	250	10" motor, 380-415V, 50Hz, DOL, 2P	\$24,043

Motor lead length: 5 metres

### 316SS construction

Model	kW	HP	Description	Price
MA-10A-055-3	55	75	10" motor, 380-415V, 50Hz, DOL, 2P	POA
MA-10A-066-3	66	90	10" motor, 380-415V, 50Hz, DOL, 2P	POA
MA-10A-075-3	75	100	10" motor, 380-415V, 50Hz, DOL, 2P	POA
MA-10A-093-3	93	125	10" motor, 380-415V, 50Hz, DOL, 2P	POA
MA-10A-110-3	110	150	10" motor, 380-415V, 50Hz, DOL, 2P	POA
MA-10A-132-3	132	175	10" motor, 380-415V, 50Hz, DOL, 2P	\$32,612
MA-10A-150-3	150	200	10" motor, 380-415V, 50Hz, DOL, 2P	\$35,275
MA-10A-165-3	165	225	10" motor, 380-415V, 50Hz, DOL, 2P	POA
MA-10A-185-3	185	250	10" motor, 380-415V, 50Hz, DOL, 2P	\$38,460

Motor lead length: 5 metres

### Notes:

Motors are 380-415V,  $\pm 10\%$ , 50hz, 2 pole. DOL - Direct On Line

Star Delta, 6 lead motors are available with price adder

10" motors are water filled and water lubricated

Silicone Carbide mechanical seal assembly fitted as standard

Standard construction are cast iron upper and lower end bells and 304 stator shell

316SS construction are 316 upper and lower end bells and stator shell

904L/Duplex SS and Super Duplex SS constructions available to order

Windings are PVC-PE, high temp windings of PE2+PA available with price adder

Motor/pump flange and shaft/spline conform to NEMA standard

Motors are VFD compatible

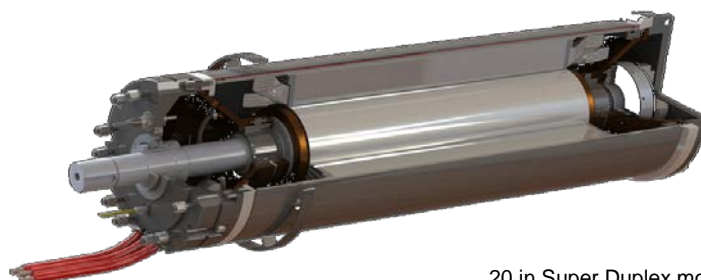
Longer lead lengths can be supplied with price adder

690V and 1,000V 50 Hz windings are available to order

4 pole motors are available to order



## Submersible motor construction options



20 in Super Duplex motor  
3D design model

### Options available for Sterling submersible motors

#### **904 - Duplex SS construction motors**

Available in 6" through to 20" motors  
Duplex 2205 , PREN value: 34

#### **Super Duplex SS construction motors**

Available in 6" through to 20" motors  
Super Duplex 2507 (S32750), PREN value: 45

#### **Zeron 100**

Available in 6" through to 20" motors  
(S32760), PREN value: > 40

#### **Nickel Alloy Bronze (NAB)**

Available in 6" through to 20" motors

#### **CuNi (Copper Nickel)**

Available in 6" through to 20" motors

#### **4 pole windings**

Available in 8"-10"-12"-14"

#### **High Voltage windings**

Available in 690v, 1,000v, 2,300v and 3,300v in 50Hz

#### **High temperature Windings**

We can wind motors with PE+PA for higher water temperatures (105°C) and high voltages such as 1,000V 50Hz

#### **Larger kW motors**

We can offer larger custom built 12" through 20" motors  
Ratings from 185kW through to 600kW

#### **Longer motor leads**

We can supply custom length motor leads



## Horizontal Multistage Pumps - TM & TMB Series



TM



TMB



TMZ/TMBZ

**40-65**

Inlet: DN40 Outlet: DN65 Head: up to 500M Flow: up to 80 m³/h

Size	Model configuration		Inlet DN	Inlet PN	Outlet DN	Outlet PN	Stg	Price
40-65/2	TM	TMB	65	16	40	40	2	POA Due to many options to suit your specific needs
40-65/3	TM	TMB	65	16	40	40	3	
40-65/4	TM	TMB	65	16	40	40	4	
40-65/5	TM	TMB	65	16	40	40	5	
40-65/6	TM	TMB	65	16	40	40	6	
40-65/7	TM	TMB	65	16	40	40	7	
40-65/8	TM	TMB	65	16	40	40	8	
40-65/9	x	TMB	65	16	40	40	9	
40-65/10	x	TMB	65	16	40	40	10	
40-65/11	x	TMB	65	16	40	40	11	
40-65/12	x	TMB	65	16	40	40	12	
40-65/13	x	TMB	65	16	40	40	13	
40-65/14	x	TMB	65	16	40	40	14	

**40-65**

Close coupled - electric motor or diesel engine; TMZ &amp; TMBZ

1500rpm, 1800rpm, 3000rpm and 3600rpm available

40-65/2	TMZ	TMBZ	x	65	16	40	40	2	POA Due to many options to suit your specific needs
40-65/3	TMZ	TMBZ	x	65	16	40	40	3	
40-65/4	TMZ	TMBZ	x	65	16	40	40	4	
40-65/5	TMZ	TMBZ	x	65	16	40	40	5	
40-65/6	TMZ	TMBZ	x	65	16	40	40	6	
40-65/7	TMZ	TMBZ	x	65	16	40	40	7	
40-65/7R	x	x	TMBZ2	65	16	40	63	7	
40-65/8	TMZ	TMBZ	x	65	16	40	40	8	
40-65/8R	x	x	TMBZ2	65	16	40	63	8	
40-65/9	TMZ	TMBZ	x	65	16	40	40	9	
40-65/9R	x	x	TMBZ2	65	16	40	63	9	
40-65/10	TMZ	TMBZ	x	65	16	40	40	10	
40-65/10R	x	x	TMBZ2	65	16	40	63	10	
40-65/11	x	TMBZ	x	65	16	40	40	11	
40-65/11R	x	X	TMBZ2	65	16	40	63	11	
40-65/12	x	TMBZ	x	65	16	40	40	12	
40-65/12R	x	x	TMBZ2	65	16	40	63	12	
40-65/13	x	TMBZ	x	65	16	40	40	13	
40-65/13R	x	x	TMBZ2	65	16	40	63	13	
40-65/14	x	TMBZ	x	65	16	40	40	14	
40-65/14R	x	x	TMBZ2	65	16	40	63	14	

**Notes:**

316SS versions available to order



## Horizontal Multistage Pumps - TM & TMB Series



TM



TMB



TMV



TMZ/TMBZ

**50-80**

Inlet: DN50 Outlet: DN80 Head: up to 622M Flow: up to 125 m³/h

Size	Model configuration			Inlet DN	Inlet PN	Outlet DN	Outlet PN	Stg	Price
50-80/2	TM	TMB	TMV	80	16	50	40	2	POA Due to many options to suit your specific needs
50-80/3	TM	TMB	TMV	80	16	50	40	3	
50-80/4	TM	TMB	TMV	80	16	50	40	4	
50-80/5	TM	TMB	TMV	80	16	50	40	5	
50-80/6	TM	TMB	TMV	80	16	50	40	6	
50-80/7	TM	TMB	TMV	80	16	50	40	7	
50-80/8	x	TMB	TMV	80	16	50	40	8	
50-80/9	x	TMB	TMV	80	16	50	40	9	
50-80/10	x	TMB	TMV	80	16	50	40	10	
50-80/11	x	TMB	TMV	80	16	50	40	11	
50-80/12	x	TMB	TMV	80	16	50	40	12	
50-80/13	x	TMB	TMV	80	16	50	40	13	

**50-80**

Close coupled - electric motor or diesel engine; TMZ &amp; TMBZ

1500rpm, 1800rpm, 3000rpm and 3600rpm available

50-80/2	TMZ	TMBZ	x	TMVZ	80	16	50	40	2	POA Due to many options to suit your specific needs
50-80/3	TMZ	TMBZ	x	TMVZ	80	16	50	40	3	
50-80/4	TMZ	TMBZ	x	TMVZ	80	16	50	40	4	
50-80/5	TMZ	TMBZ	x	TMVZ	80	16	50	40	5	
50-80/6	TMZ	TMBZ	x	TMVZ	80	16	50	40	6	
50-80/6R	x	x	TMBZ4	x	80	16	50	63	6	
50-80/7	TMZ	TMBZ	x	TMVZ	80	16	50	40	7	
50-80/7R	x	x	TMBZ4	x	80	16	50	63	7	
50-80/8	TMZ	TMBZ	x	TMVZ	80	16	50	40	8	
50-80/8R	x	x	TMBZ4	x	80	16	50	63	8	
50-80/9	TMZ	TMBZ	x	TMVZ	80	16	50	40	9	
50-80/9R	x	x	TMBZ4	x	80	16	50	63	9	
50-80/10	TMZ	TMBZ	x	TMVZ	80	16	50	40	10	
50-80/10R	x	x	TMBZ4	x	80	16	50	63	10	
50-80/11	x	TMBZ	x	TMVZ	80	16	50	40	11	
50-80/11R	x	X	TMBZ4	x	80	16	50	63	11	
50-80/12	x	TMBZ	x	TMVZ	80	16	50	40	12	
50-80/12R	x	x	TMBZ4	x	80	16	50	63	12	
50-80/13	x	TMBZ	x	TMVZ	80	16	50	40	13	
50-80/13R	x	x	TMBZ4	x	80	16	50	63	13	

**Notes:**

316SS versions available to order



## Horizontal Multistage Pumps - TM & TMB Series



TM



TMB



TMZ/TMBZ

65-100	Inlet: DN65	Outlet: DN100	Head: up to 520M	Flow: up to 150 m³/h
--------	-------------	---------------	------------------	----------------------

Size	Model configuration		Inlet DN	Inlet PN	Outlet DN	Outlet PN	Stg	Price
65-100/2	TM	TMB	100	16	65	40	2	POA Due to many options to suit your specific needs
65-100/3	TM	TMB	100	16	65	40	3	
65-100/4	TM	TMB	100	16	65	40	4	
65-100/5	TM	TMB	100	16	65	40	5	
65-100/6	x	TMB	100	16	65	40	6	
65-100/7	x	TMB	100	16	65	40	7	
65-100/8	x	TMB	100	16	65	40	8	
65-100/9	x	TMB	100	16	65	40	9	
65-100/10	x	TMB	100	16	65	40	10	
65-100/11	x	TMB	100	16	65	40	11	
65-100/12	x	TMB	100	16	65	40	12	

65-100	Close coupled - electric motor or diesel engine; TMZ & TMBZ			
--------	---	--	--	--

1500rpm, 1800rpm, 3000rpm and 3600rpm available

65-100/2	TMZ	TMBZ	x	100	16	65	40	2	POA Due to many options to suit your specific needs
65-100/3	TMZ	TMBZ	x	100	16	65	40	3	
65-100/4	TMZ	TMBZ	x	100	16	65	40	4	
65-100/5	TMZ	TMBZ	x	100	16	65	40	5	
65-100/5R	x	x	TMBZ2	100	16	65	63	5	
65-100/6	TMZ	TMBZ	x	100	16	65	40	6	
65-100/6R	x	x	TMBZ2	100	16	65	63	6	
65-100/7	TMZ	TMBZ	x	100	16	65	40	7	
65-100/7R	x	x	TMBZ2	100	16	65	63	7	
65-100/8	TMZ	TMBZ	x	100	16	65	40	8	
65-100/8R	x	x	TMBZ2	100	16	65	63	8	
65-100/9	TMZ	TMBZ	x	100	16	65	40	9	
65-100/9R	x	x	TMBZ2	100	16	65	63	9	
65-100/10	TMZ	TMBZ	x	100	16	65	40	10	
65-100/11	x	TMBZ	x	100	16	65	40	11	
65-100/12	x	TMBZ	x	100	16	65	40	12	
65-100/13	x	TMBZ	x	100	16	65	40	13	

### Notes:

316SS versions available to order





## Horizontal Multistage Pumps - TM & TMB Series



TM



TMB



TMZ/TMBZ

80-125	Inlet: DN80	Outlet: DN125	Head: up to 580M	Flow: up to 276 m <sup>3</sup> /h
--------	-------------	---------------	------------------	-----------------------------------

Size	Model configuration		Inlet DN	Inlet PN	Outlet DN	Outlet PN	Stg	Price
80-125/2	TM	TMB	125	16	80	40	2	POA Due to many options to suit your specific needs
80-125/3	TM	TMB	125	16	80	40	3	
80-125/4	TM	TMB	125	16	80	40	4	
80-125/5	TM	TMB	125	16	80	40	5	
80-125/6	x	TMB	125	16	80	40	6	
80-125/7	x	TMB	125	16	80	40	7	
80-125/8	x	TMB	125	16	80	40	8	
80-125/9	x	TMB	125	16	80	40	9	
80-125/10	x	TMB	125	16	80	40	10	

80-125	Close coupled - electric motor or diesel engine; TMZ & TMBZ			
--------	---	--	--	--

1500rpm, 1800rpm, 3000rpm and 3600rpm available

80-125/2	TMZ	TMBZ	x	125	16	80	40	2	POA Due to many options to suit your specific needs
80-125/3	TMZ	TMBZ	x	125	16	80	40	3	
80-125/4	TMZ	TMBZ	x	125	16	80	40	4	
80-125/4R	x	x	TMBZ2	125	16	80	63	4	
80-125/5	TMZ	TMBZ	x	125	16	80	40	5	
80-125/5R	x	x	TMBZ2	125	16	80	63	5	
80-125/6	TMZ	TMBZ	x	125	16	80	40	6	
80-125/6R	x	x	TMBZ2	125	16	80	63	6	
80-125/7	TMZ	TMBZ	x	125	16	80	40	7	
80-125/7R	x	x	TMBZ2	125	16	80	63	7	
80-125/8	TMZ	TMBZ	x	125	16	80	40	8	
80-125/9	TMZ	TMBZ	x	125	16	80	40	9	
80-125/10	TMZ	TMBZ	x	125	16	80	40	10	
80-125/11	x	TMBZ	x	125	16	80	40	11	
80-125/12	x	TMBZ	x	125	16	80	40	12	
80-125/13	x	TMBZ	x	125	16	80	40	13	

### Notes:

316SS versions available to order



## Horizontal Multistage Pumps - TM & TMB Series



TM



TMB



TMZ/TMBZ

**100-150**

Inlet: DN150 Outlet: DN100 Head: up to 620M Flow: up to 310 m³/h

Size	Model configuration		Inlet DN	Inlet PN	Outlet DN	Outlet PN	Stg	Price
100-150/2	TM	TMB	150	16	100	40	2	POA Due to many options to suit your specific needs
100-150/3	TM	TMB	150	16	100	40	3	
100-150/4	TM	TMB	150	16	100	40	4	
100-150/5	TM	TMB	150	16	100	40	5	
100-150/6	x	TMB	150	16	100	40	6	
100-150/7	x	TMB	150	16	100	40	7	
100-150/8	x	TMB	150	16	100	40	8	
100-150/9	x	TMB	150	16	100	40	9	
100-150/10	x	TMB	150	16	100	40	10	

**100-150**

Close coupled - electric motor or diesel engine; TMZ &amp; TMBZ

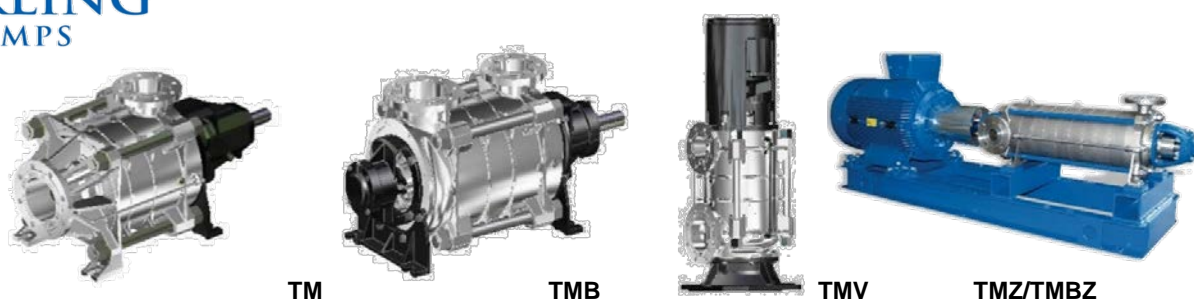
1500rpm, 1800rpm, 3000rpm and 3600rpm available									POA Due to many options to suit your specific needs
100-150/2	TMZ	TMBZ	x	150	16	100	40	2	
100-150/3	TMZ	TMBZ	x	150	16	100	40	3	
100-150/3R	x	x	TMBZ2	150	16	100	63	3	
100-150/4	TMZ	TMBZ	x	150	16	100	40	4	
100-150/4R	x	x	TMBZ2	150	16	100	63	4	
100-150/5	TMZ	TMBZ	x	150	16	100	40	5	
100-150/5R	x	x	TMBZ2	150	16	100	63	5	
100-150/6	TMZ	TMBZ	x	150	16	100	40	6	
100-150/6R	x	x	TMBZ2	150	16	100	63	6	
100-150/7	TMZ	TMBZ	x	150	16	100	40	7	
100-150/8	TMZ	TMBZ	x	150	16	100	40	8	
100-150/9	TMZ	TMBZ	x	150	16	100	40	9	
100-150/10	TMZ	TMBZ	x	150	16	100	40	10	

**Notes:**

316SS versions available to order



## Horizontal Multistage Pumps - TM & TMB Series



TM

TMB

TMV

TMZ/TMBZ

**125-200** Inlet: DN200 Outlet: DN125 Head: up to 280M Flow: up to 280 m³/h

Size	Model configuration			Inlet DN	Inlet PN	Outlet DN	Outlet PN	Stg	Price
125-200/2	TM	TMB	TMV	200	16	125	40	2	POA Due to many options to suit your specific needs
125-200/3	TM	TMB	TMV	200	16	125	40	3	
125-200/4	TM	TMB	TMV	200	16	125	40	4	
125-200/5	TM	TMB	TMV	200	16	125	40	5	
125-200/6	x	TMB	x	200	16	125	40	6	
125-200/7	x	TMB	x	200	16	125	40	7	
125-200/8	x	TMB	x	200	16	125	40	8	

**125-200** Close coupled - electric motor or diesel engine; TMZ & TMBZ

1500rpm and 1800rpm available									POA Due to many options to suit your specific needs
125-200/2	TMZ	TMBZ	x	200	16	125	40	2	
125-200/3	TMZ	TMBZ	x	200	16	125	40	3	
125-200/4	TMZ	TMBZ	x	200	16	125	40	4	
125-200/5	TMZ	TMBZ	x	200	16	125	40	5	
125-200/6	TMZ	TMBZ	x	200	16	125	40	6	
125-200/7	TMZ	TMBZ	x	200	16	125	40	7	
125-200/8	TMZ	TMBZ	x	200	16	125	40	8	

### Notes:

316SS versions available to order



## Horizontal Multistage Pumps - TM & TMB Series



TM



TMB



TMZ/TMBZ

**150-200** Inlet: DN200 Outlet: DN150 Head: up to 280M Flow: up to 420 m<sup>3</sup>/h

Size	Model configuration			Inlet DN	Inlet PN	Outlet DN	Outlet PN	Stg	Price
150-200/2	TM	TMB	x	200	16	150	40	2	POA Due to many options to suit your specific needs
150-200/3	TM	TMB	x	200	16	150	40	3	
150-200/4	TM	TMB	x	200	16	150	40	4	
150-200/5	x	TMB	x	200	16	150	40	5	
150-200/6	x	TMB	x	200	16	150	40	6	

**150-200** Close coupled - electric motor or diesel engine; TMZ & TMBZ

1500rpm and 1800rpm available

150-200/2	TMZ	TMBZ	x	200	16	150	40	2	POA Due to many options to suit your specific needs
150-200/3	TMZ	TMBZ	x	200	16	150	40	3	
150-200/4	TMZ	TMBZ	x	200	16	150	40	4	
150-200/5	TMZ	TMBZ	x	200	16	150	40	5	
150-200/6	TMZ	TMBZ	x	200	16	150	40	6	

### Notes:

316SS versions available to order

**200-250** Inlet: DN250 Outlet: DN200 Head: up to 290M Flow: up to 840 m<sup>3</sup>/h

Size	Model configuration			DN	PN	DN	PN	Stg	Price
200-250/2	x	TMB	x	250	16	200	40	2	POA
200-250/3	x	TMB	x	250	16	200	40	3	
200-250/4	x	TMB	x	250	16	200	40	4	

**200-250** Close coupled - electric motor or diesel engine; TMZ & TMBZ

1500rpm and 1800rpm available

200-250/2	x	TMBZ	x	250	16	200	40	2	POA
200-250/3	x	TMBZ	x	250	16	200	40	3	

### Notes:

316SS versions available to order



## Horizontal Split Case Pumps - U Series



### Axially Split, Single Stage, Double - Suction pump

Model	Nominal Dia impeller (inches)	RPM	Discharge size (mm)	Suction size (mm)	Price
2 U 1	1"	2,900	50	80	POA Due to many options to suit your specific needs
2 U 13	13"	1,450	50	80	
3 U 15	15"	1,450	80	125	
4 U13	13"	1,450	100	150	
4 U 18	18"	1,450	100	150	
6 U 18	18"	1,450	150	200	

#### Notes:

Axially split case design  
 2 stage pump  
 Range: 100 m<sup>3</sup>/h to 2,200 m<sup>3</sup>/h  
 Head up to 90 metre  
 Double suction - Closed Impeller  
 High efficiency  
 Low NPSHR  
 Option for Gland Pack seal or Mechanical seal

Construction Options: Cast Iron, Bronze, Stainless Steel  
 Refer to specification booklet for more details of build options



## Horizontal Split Case Pumps - LN Series



### Axially Split, Single Stage, Double suction pump

Model	Nominal Dia impeller (icnhes)	RPM	Discharge size (mm)	Suction size (mm)	Price
8 LN 18	18"	1,480	200	300	POA Due to many options to suit your specific needs
8 LN 21	21"	1,480	200	350	
9 LN 29	29"	1,480	200	350	
10 LN 18	18"	1,480	250	300	
10 LN 22	22"	1,480	250	350	
10 LN 26	26"	1,480	250	350	
12 LN 14	14"	1,480	300	350	
12 LN 17	17"	1,480	300	400	
12 LN 21	21"	1,480	300	400	
12 LNH 21	21"	985	300	400	
14 LN 19	19"	985	350	400	
16 LN 23	23"	985	400	500	
16 LN 35	35"	985	400	600	
20 LN 26	26"	985	500	700	
20 LN 28	28"	985	500	600	
24 LN 34	34"	985	600	750	
24 LN 42	42"	985	600	900	
30 WLN 30	30"	590	750	750	
30 LN 41	41"	590	750	900	

#### Notes:

Axially split case design  
 Single stage pump  
 Range: 400 m<sup>3</sup>/h to 150,000 m<sup>3</sup>/h  
 Head up to 190 metre  
 Double suction - Closed Impeller  
 Horizontal and vertical executions available  
 High efficiency  
 Low NPSHR  
 Option for Gland Pack seal or Mechanical seal  
 LHN = High pressure with larger size shaft

Construction Options: Cast Iron, Bronze, Stainless Steel  
 Refer to specification booklet for more details of build options





## Horizontal Split Case Pumps - LR Series



### Axially Split, Single Stage, Double Volute pump

Model	Nominal Dia impeller (inches)	RPM	Discharge size (mm)	Suction size (mm)	Price
2-1/2 LR 10	10"	2,900/1,450	65	80	POA Due to many options to suit your specific needs
3 LR 12	12"	1,450	80	125	
4 LR 12	12"	1,450	100	150	
4 LR 14	14"	1,450	100	150	
5 LR 10	10"	1,450	125	150	
6 LR 13	13"	1,450	150	200	
6 LR 16	16"	1,450	150	200	
6 LR 18	18"	1,450	150	250	
8 LR 14	14"	1,450	200	250	
10 LR 16	16"	1,450/960	250	300	
12 LR 25	25"	980	300	450	

#### Notes:

Axially split case design  
 Single stage pump  
 Range: 10 m<sup>3</sup>/h to 2,200 m<sup>3</sup>/h  
 Head up to 90 metre  
 Double suction - Closed Impeller  
 Horizontal and vertical executions available  
 High efficiency  
 Option for Gland Pack seal or Mechanical seal

Construction Options: Cast Iron, Bronze, Stainless Steel  
 Refer to specification booklet for more details of build options



## Dewatering Pumps - M & G series

### DEWATERING

Model	kW	Head metres	Discharge LPM	Pump end Price	Tool Kit Price
M 100 M	1.1	6-10	350-250	\$2,073	\$370
M 120 M	1.5	6-12	500-275	\$2,409	\$435
M 154 T	1.5	6-10	625-425	\$3,866	\$435
M 204 T	2.2	6-12	950-550	\$3,966	\$435
M 404 T	3	6-16	1050-375	\$4,392	\$435
M 502 T	3.7	5-10	1825-1200	\$5,678	\$457
M 504 T	3.7	5-15	1100-750	\$5,431	\$457
M 506 TH	3.7	20-40	300-225	\$7,440	\$457
M 536 TH	5.5	30-40	500-350	\$8,000	\$457
M 556 TH	7.5	30-40	800-550	\$8,815	\$457
G 502 T	3.7	5-10	1825-1200	\$5,580	\$457
G 504 T	3.7	5-15	1100-750	\$5,434	\$457
G 506 T	3.7	30-40	300-225	\$6,711	\$457
G 536 TH	5.5	30-40	600-350	\$7,272	\$457
G 556 TH	7.5	30-40	800-550	\$8,134	\$457
M 530 T	5.5	10-20	1800-800	\$7,081	\$457
G 530 T	5.5	10-20	1800-800	\$5,882	\$457
G 536 T	5.5	15-35	900-500	\$7,272	\$457
M 554 T	7.5	10-20	2300-1200	\$7,922	\$457
G 554 T	7.5	10-20	2300-1200	\$6,566	\$457
M 702 T/M	11.8	10-25	3500-1400	\$15,406	\$522
M 706 T/M	11.8	50-60	700-450	\$15,787	\$522
M 756 T/M	11.8	50-60	900-650	\$17,389	\$555
M 752 T/M	11.8	10-30	4000-1300	\$17,087	\$555
G 702 T/M	11.8	10-25	3500-1450	\$13,950	\$457
G 706 T/M	11.8	50-60	700-450	\$14,902	\$457
G 756 T/M	11.8	50-60	990-650	\$16,022	\$522
G 752 T/M	1.8	10-30	4000-1300	\$15,070	\$522
M 802 T/M	18.65	15-20	4500-1750	\$19,922	\$566
M 806 T/M	18.65	45-55	1000-750	\$20,314	\$566
G 802 T/M	18.65	15-30	4500-1750	\$19,585	\$566
G 806 T/M	18.65	45-55	1000-750	\$19,955	\$566
M 902 T	26.11	15-35	5700-2200	\$23,495	\$588
M 906 T	26.11	50-65	1500-750	\$23,888	\$588
G 902 T	26.11	15-35	5700-2200	\$21,557	\$566
G 906 T	26.11	50-65	1500-750	\$22,028	\$566
G 1002 T	37	20-48	6700-1500	\$25,647	\$653
G 1006 T	37	40-70	3250-1750	\$24,594	\$653



#### Notes:

All pumps are supplied with 20 metres of Cable  
Head and Discharge figures are recommended  
All motors are 3 phase, 50 Hz



## Dewatering Pumps - NC & MS series



### NON CLOG

Model	kW	Head metres	Discharge LPM	Pump end Price	Tool Kit Price
NC 06350 M/1	4.5	7.5-15	800-450	\$7,395	\$435
NC 08350 M/1	6	12.5-22.5	800-350	\$7,731	\$435
NC 10350 M/1	7.5	13-24	850-400	\$7,821	\$435



### SEWAGE

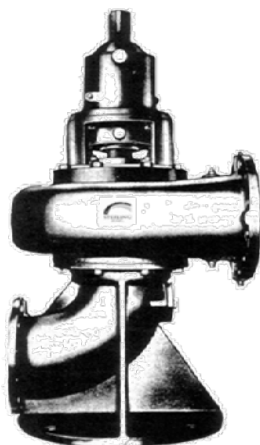
Model	kW	Head metres	Discharge LPM	Pump end Price	Tool Kit Price
MS 121	1.5	6-10	500-250	\$4,550	\$435
MS 231	2.2	8-16	800-400	\$7,473	\$435
MS 232	2.2	5-10	1500-400	\$7,922	\$435
MS 252	3.7	6-12	2200-900	\$8,538	\$435
MS 481	7.5	9-18	2500-1250	\$11,507	\$457
MS 482	7.5	6-14	3500-1250	\$12,448	\$457
MS 483	7.5	5-9	3250-1000	\$12,616	\$457
MS 6152	11	10-17	4000-2000	\$17,838	\$522
MS 6202	15	12-22	4500-1500	\$18,353	\$522

#### Notes:

All pumps are supplied with 20 metres of Cable  
 Head and Discharge figures are recommended  
 All motors are 3 phase, 50 Hz



## Solids Handling Pumps - MN Series



### Radially split, Single stage, Mixed Flow

Model	Nominal Dia impeller (inches)	Discharge size (mm)	Suction size (mm)	Price
10 MN-12	12	10	10	POA Due to many options to suit your specific needs
12 MN-14	14	12	12	
12 MN-19	19	12	12	
12 MN-24	24	12	12	
14 MN-16	16	14	14	
14 MN-24	24	14	14	
16 MN-19	19	16	16	
16 MN-25	25	16	16	
16 MN-33	33	16	16	
20 MN-24	24	20	20	
20 MN-30	30	20	20	
24 MN-28	28	20	20	
20 MN-39	39	20	20	
24 MN-33	33	24	24	
24 MN-47	47	24	24	
30 MN-33	33	30	30	
30 MN-43	43	30	30	

#### Notes:

Radially split case design, single stage

Cast Iron construction

Range: up to 10,220 m<sup>3</sup>/h

Head up to 68 metre

High efficiency

Low NPSHR

Non clogging

Construction Options: Stainless Steel

Refer to specification booklet for more details of build options



## End Suction Pumps - DS Series



### End Suction Pump - Single stage, double volute, radially split

Model	Nominal impeller diameter (mm)	Bearing Frame size	RPM	Discharge size (mm)	Suction size (mm)	Price
200 DS 401A	400	1	1,480	200	250	POA Due to many options to suit your specific needs
200 DS 552A	550	2	1,480	200	250	
250 DS 401A	400	1	1,480	250	300	

Other sizes and capacities are available on request

Pump and Motor Assembly on base, available to order - POA

PN16 flanges as standard, option for PN40 or 300 ANSI on request

#### Notes:

Back Pull Out design (BPO)

Single stage pump

Range: up to 200 m<sup>3</sup>/h to 1,500 m<sup>3</sup>/h

Head up to 106 metres

Double volute offers stable operation over a wide range

Stuffing box with 5 packing rings with option for Mechanical seal

#### Construction Options:

Standard Cast Iron, All Iron, All Bronze, All Stainless Steel

Refer to specification booklet for more details of build options



## Pumping Accessories

### Submersible Drop Cable 4 Core (3 wire + earth /3C+E)



Size mm <sup>2</sup>	Description	Order Number	Price per metre
2.5	4 core submersible power cable H07RNF rubber	AM11730	\$9.73
4	4 core submersible power cable H07RNF rubber	AM11731	\$10.16
6	4 core submersible power cable H07RNF rubber	AM11732	\$13.68
10	4 core submersible power cable H07RNF rubber	AM11733	\$24.00
16	4 core submersible power cable H07RNF rubber	AM11734	\$38.34
25	4 core submersible power cable H07RNF rubber	AM11735	\$49.28
35	4 core submersible power cable H07RNF rubber	AM11736	\$60.72
50	4 core submersible power cable H07RNF rubber	AM11737	\$92.72
70	4 core submersible power cable H07RNF rubber	AM11738	\$117.30
70	Single core submersible power cable H07RNF rubber	AM11739	\$26.80
95	Single core submersible power cable H07RNF rubber	AM11740	\$34.29

Pump drop cable is suitable for submergence to 1,000 metres

Flexible rubber multicore 0.6/1KV 125°C pump drop cable X-HF-110/E-110-R

Complies to AS/NZS 5000.1: 2005 and revisions

Check Sterling cable selection chart to ensure correct size selected for your installation

### Splice Kits



Size mm <sup>2</sup>	Description	Order Number	Price
4"	4" Splice Kit, up to 4mm	AM11725	\$40
6"	6" splice Kit, up to 6mm	AM11726	\$46

Splice Kits include;

Connectors, shrink tubes, emery paper, mastic putty and cleaning wipe

**Sterling can perform the submersible motor lead to drop cable splice on your behalf**

### Motor Lead to Drop Cable Splicing

Motor Size	Description	Order Number	Price
4"	Submersible cable joint supply and fit - 4" x 3-4 wire	AM11720	\$400
6"	Submersible cable joint supply and fit - 6" x 4 wire	AM11721	\$400
8"	Submersible cable joint supply and fit - 8" x 4 wire	AM11722	\$600
10"	Submersible cable joint supply and fit - 10" x 4 wire	AM11723	\$800
12"	Submersible cable joint supply and fit - 12" x 4 wire	AM11724	\$1,200

All splices are meg tested prior to despatch

### Safety Wire



Size	Description	Order Number	Price
3mm	3.2mm 316SS x 305 metre roll	AM11760	\$1,000
4mm	4mm 316SS x 305 metre roll	AM11761	\$1,550
3mm	U clamp/grip for 3.2mm safety wire	AM11762	\$5
4mm	U clamp/grip for 4mm safety wire	AM11763	\$5

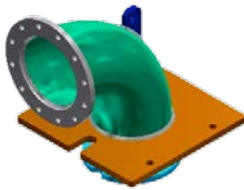




## Bore caps and Well Heads

### Bore Caps - Well Heads

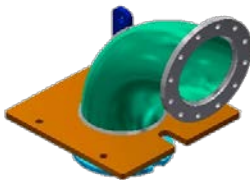
### MILD STEEL



Size	Description	Order Number	Price
1-1/2"	1-1/2" BSP (40mm) mild steel straight bore cap	AM11800	\$91
2"	2" BSP (50mm) mild steel straight bore cap	AM11801	\$91
3"	3" BSP (75mm) mild steel straight bore cap	AM11802	\$103
4"	4" BSP (100mm) mild steel straight bore cap	AM11803	\$103
6"	6" well head, mild steel flanged 90dg elbow with lifting lugs 6" BSPF inlet x 6" Table E flange outlet	AM11804	\$480
8"	8" well head, mild steel flanged 90dg elbow with lifting lugs 8" column thread inlet x 8" Table E flange outlet	AM11805	\$540
10"	10" well head, mild steel flanged 90dg elbow with lifting lugs 10" column thread inlet x 10" Table E flange outlet	AM11806	\$950

### Bore Caps - Well Heads

### 304 STAINLESS STEEL



Size	Description	Order Number	Price
1-1/2"	1-1/2" BSP (40mm) 304 SS straight bore cap	AM11807	\$268
2"	2" BSP (50mm) 304SS straight bore cap	AM11808	\$286
3"	3" BSP (75mm) 304SS straight bore cap	AM11809	\$340
4"	4" BSP (100mm) 304SS straight bore cap	AM11810	\$480
6"	6" well head, 304SS flanged 90dg elbow with lifting lugs 6" BSPF inlet x 6" Table E flange outlet	AM11811	\$860
8"	8" well head, 304SS flanged 90dg elbow with lifting lugs 8" column thread inlet x 8" Table E flange outlet	AM11812	\$1,200
10"	10" well head, 304SS flanged 90dg elbow with lifting lugs 10" column thread inlet x 10" Table E flange outlet	AM11813	\$1,850

Other size well heads are available to order, POA

8" and 10" well heads, column thread can be adapted to flange, POA



## Pumping Accessories

### Couple submersible pump to motor

Motor Size	Description	Order Number	Price
4"	Couple 4" submersible pump and motor	AM11698	\$100
6"	Couple 6" submersible pump and motor	AM11699	\$150
8"	Couple 8" submersible pump and motor	AM11700	\$200
10"	Couple 10" submersible pump and motor	AM11701	\$250
12"	Couple 12" submersible pump and motor	Am11702	\$300

Submersible motors are coupled/fitted to the submersible pump and motor lead installed in cable guard

### Pack and Crate of submersible pump & motor assembly

Motor Size	Description	Order Number	Price
4"	Pack 4" submersible pump and motor in timber crate	AM11703	\$100
6"	Pack 6" submersible pump and motor in timber crate	AM11704	\$150
8"	Pack 8" submersible pump and motor in timber crate	AM11705	\$200
10"	Pack 10" submersible pump and motor in timber crate	AM11706	\$250

Wooden crate, fully enclosed

Submersible pumps and submersible motor are usually sold and despatched in separate crates

### Performance testing of pump motor assembly

Motor Size	Description	Order Number	Price
6"	Mechanical run and performance testing of 6" submersible pump	AM11710	\$600
8"	Mechanical run and performance testing of 8" submersible pump	AM11711	\$900
10"	Mechanical run and performance testing of 10" submersible pump	AM11712	\$1,250
12"	Mechanical run and performance testing of 12" submersible pump	AM11713	\$1,800
All	Mechanical run and performance testing pump to customers requirements	AM11714	POA

Pump testing to ISO 9006:2012 and AS 2147:2001 (ISO 9006:1999)



## Soft Starters

### Soft Starters in enclosures

Order Number	Description	H x W x D	Price
SST-11000	10 amp Soft Starter in IP56 steel enclosure with bypass	500 x 400 x 300	\$4,143
SST-11001	34 amp Soft Starter in IP56 steel enclosure with bypass	500 x 400 x 300	\$4,571
SST-11002	42 amp Soft Starter in IP56 steel enclosure with bypass	500 x 400 x 300	\$4,914
SST-11003	48 amp Soft Starter in IP56 steel enclosure with bypass	500 x 400 x 300	\$5,071
SST-11004	60 amp Soft Starter in IP56 steel enclosure with bypass	500 x 400 x 300	\$5,457
SST-11005	75 amp Soft Starter in IP56 steel enclosure with bypass	600 x 600 x 300	\$6,000
SST-11006	85 amp Soft Starter in IP56 steel enclosure with bypass	600 x 600 x 300	\$6,571
SST-11007	100 amp Soft Starter in IP56 steel enclosure with bypass	600 x 600 x 300	\$7,200
SST-11008	140 amp Soft Starter in IP56 steel enclosure with bypass	800 x 600 x 300	\$7,914
SST-11009	170 amp Soft Starter in IP56 steel enclosure with bypass	800 x 600 x 300	\$8,243
SST-11010	200 amp Soft Starter in IP56 steel enclosure with bypass	800 x 600 x 300	\$9,714
SST-11011	255 amp Soft Starter in IP56 steel enclosure with bypass	1400 x 1000 x 400	\$13,571

All soft starters are supplied with Internal Bypass contactor

Select motor amps at Full Load Current at 415V to size soft starter amp rating

IP65 enclosure is rated for outdoor installation

Three Phase input - Three Phase output

Voltage range: 200 - 690V AC

Power Range: 7.5kW - 850kW

Current Range: 18A - 255A and up to 1600A available





## Series 100 Flexibore Flexible Riser Hose



	Hose	Couplings 304SS	Joiner 304SS	Cable ties
Hose Diameter	per metre	per set	each	each
32mm (1-1/4")	AM11750	AM11751	AM11752	AM11753
	\$17.73/M	\$119.47	\$193.57	\$1.03
50mm (2")	AM11754	AM11755	AM11756	AM11757
	\$19.6/M	\$175.09	\$257.41	\$1.03

### Notes:

Each flexible hose assembly requires 2 sets of couplings, one on each end

Fit 2 cable ties at each loop

### Install Roller

AM11758
\$491

Suits both 4" and 6" bores





## Series 250 Flexibore Flexible Riser Hose



	Hose	Couplings 304SS	Couplings 316SS	Joiners 316SS	Straps	Cable ties
Hose Diameter	per metre	per set	per set	each	each	each
40mm (1-1/2")	AM11759 \$22.00/M	AM11760 \$274.40	AM11761 \$494.67	na	AM11762 \$6.81	AM11763 \$1.77
50mm (2")	AM11764 \$31.68/M	AM11765 \$302.40	AM11766 \$530.13	na	AM11767 \$6.81	AM11768 \$1.77
75mm (3")	AM11769 \$89.36/M	AM11770 \$569.33	AM11771 \$961.33	AM xxx \$	AM11772 \$7.00	AM11773 \$1.77
100mm (4")	AM11774 \$126.40/M	AM11775 \$728.00	AM11776 \$1,241.33	AM xxx \$	AM11777 \$7.56	AM11778 \$1.77
125mm (5")	AM11779 \$170.32/M	AM11780 \$1,026.67	AM11781 \$1,745.33	na	AM11782 \$8.03	AM11783 \$2.33
150mm (6")	AM11784 \$197.76/M	AM11785 \$1,194.67	AM11786 \$2,025.33	na	AM11787 \$8.68	AM11788 \$2.33
200mm (8")	AM11789 \$336.24/M	na not avail	AM11790 \$4,424.00	na	AM11791 \$8.96	AM11792 \$2.55

### Notes:

Each flexible hose assembly requires 2 sets of couplings, one on each end  
At each hose loop, fit 1 x strap and 2 x cable ties

Installation Roller (6.0 tonnes)	AM11793 \$5,003	POA for 10 tonne roller assy
Lifting Clamps (1.3 tonnes) Std	AM11794 \$1,241	POA for 3.5 and 4 tonne lifting clamps
Break off Plug unit	AM11795 \$171	Brass break off plug only POA for fitted into coupling
Wire Whip coupling onto hose	AM \$780	To replace outer clamp rings with a wire whipping



## Fire Water Pumps and Packages



### **Sterling Pumps manufacturer engineered Fire Water Pumps and Packages**

#### **NFPA20 - FM/UL - AS2941**

22% Cr Duplex and 25% Cr Super Duplex Stainless Steel  
Nickel Aluminium Bronze  
316 Stainless Steel  
Zinc Free and Marine grade Bronze  
Cast Iron and other materials on request

Airports, Oil Platforms, FSPO's, Mining, maritime & vessels  
Petrochemical plants, Fuel farms, power plants

Horizontal Split Case Pumps, Vertical Turbine Pumps  
End Suction Pumps, Horizontal Multi stage Pumps,

Electric motor or Diesel driven  
Local Fire Control Panels  
Skid Mounted - Containerised Fire Packages







## API 610 Pumps and Packages

**Sterling Pumps manufacture engineered  
API 610 pumps and pumping systems**

### **API 610 current edition compliant**

Utilising Sterling vertical close coupled, single or multistage turbine pumps with fabricated discharge heads, top motor mounts and wet sump/pit (VS1) or closed suction (VS6).

Fire Pumps, Aircraft fueling, LPG transfer, pipelines,  
Offshore Platform/sea water lift, Refinery duty, pipeline booster,  
Cooling Water, Terminal/transfer, Oil & Gas Processing

316SS, Duplex and Super Duplex Stainless Steel  
Zinc Free Bronze, Cast iron, Nickel Alum Bronze  
with approved API 610 material combinations

VS6 pumping system



VS1 pumpset

**Due to the technical applications of these API 610 pumps,  
pricing is on application to meet your specified duty and application**

## **TERMS AND CONDITIONS OF SALE – July 2015**

### **Payment terms**

The terms of payment are strictly thirty (30) days (or such other period as nominated

by the supplier) from the end of the month. Sterling Pumps Pty Ltd ABN 57 108 899 305 and its related bodies corporate (as that term is defined in the *Corporations Act 2001*) (**Supplier**) may, at any time, unilaterally vary the terms of trade in its absolute and unfettered discretion. The Supplier may request that milestone payments are made. It such request is made it will be made on such conditions as the Supplier may stipulate in writing at its absolute discretion.

1. Should the Applicant not pay within the time then the provisions of clause 62 will come into effect.

### **Prices**

2. Unless otherwise stated all prices quoted by the Supplier are net, exclusive of Goods and Services Tax (GST).
3. Prices quoted are those at the date of issue of quotation and are based on rates of freight, insurance, customs duties, exchange, shipping expenses, sorting and stacking charges, cartage, rate of weights, cost of materials and other charges affecting the cost of production ruling on the date the quote is made.
4. If the Supplier makes any alterations to the price of the goods or to any of their inputs either before acceptance of or during the currency of the contract, these alterations are to the Applicant's account.
5. The Supplier reserves the right to charge an insurance, freight and handling fee (including GST) on any order below a minimum amount to be determined at the Supplier's discretion.
6. The Supplier may charge the Applicant a fee of up to 10% of its costs for any stock held by it for the Applicant.

### **Delivery**

7. The delivery times made known to the Applicant are estimates only and the Supplier is not liable in any way for late delivery or non-delivery.
8. The Supplier is not liable for any loss, damage or delay (whether direct or indirect) occasioned to the Applicant or its customers arising from late or non-delivery or late installation of the goods or the provision of services.
9. The Supplier may at its option deliver the goods to the Applicant in any number of instalments unless there is an agreement to the effect that the Applicant will not take delivery by instalments.
10. If the Supplier delivers any of the goods by instalments, and any one of those instalments is defective for any reason:
  - (a) it is not a repudiation of the contract of sale formed by these conditions; and
  - (b) the defective instalment is a severable breach that gives rise only to a claim for compensation.
11. The goods are at the Applicant's risk once delivered to the carrier or collected from the Supplier.

### **Loss or damage in transit**

12. The Supplier is not responsible to the Applicant or any person claiming through the Applicant for any loss or damage (whether direct or indirect) to goods in transit caused by any event of any kind by any person or otherwise.

### **Return of goods**

13. The Supplier is not under any duty to accept goods returned by the Applicant and will do so only on terms to be agreed in writing in each individual case. Specially manufactured or repaired goods are not acceptable for return or cancellation.
14. If the Supplier agrees to accept returned goods from the Applicant under clause 14, the Applicant must return the Goods to the Supplier at the Supplier's place of business as its cost.

### **Cancellation**

15. No order may be cancelled by the Applicant except with consent in writing of the Supplier and on terms deemed reasonable by the Supplier.

### **Jurisdiction**

16. The Applicant agrees that this agreement will be governed by the laws of Victoria, and the laws of the Commonwealth of Australia which are in force in Victoria.
17. The Applicant agrees that any contract for the supply of goods or services between the Supplier and the Applicant is formed at the address of the Supplier.
18. The parties to this agreement submit to the non-exclusive jurisdiction of the courts of Victoria and the relevant state and federal courts and courts competent to hear appeals from those courts.

### **Security/charges**

19. The Applicant charges in favour of the Supplier all of its estate and interest in any real or personal property that the Applicant owns at present and in the future with the amount of its indebtedness hereunder until discharged. The Applicant appoints as its duly constituted attorney the Supplier's company secretary to execute in the Applicant's name and as the Applicant's act any, deed any real property mortgage or consent to any caveat the Supplier may choose to lodge against real property that the Applicant may own in any Land Titles Office in any state or territory of Australia. Where the Applicant has previously entered into an agreement with the Supplier by which the Applicant has granted a charge, mortgage or other security over real or personal property, those charges, mortgages or other security interests created in this agreement. The Supplier may, at its election, vary the terms of such previous charges, mortgages or other securities to reflect the terms herein.

### **Supplier's quotations**

20. Unless previously withdrawn the Supplier's quotations are open for acceptance within the period stated in them or, when no period is so stated, within thirty (30) days. The Supplier reserves the right to refuse any order based on this quotation within seven (7) days after the receipt of the order.
21. The Supplier shall use reasonable endeavours to fill orders accepted by it but will in no event be liable or responsible to the Applicant or any third party for any failure or inability to supply goods ordered by the Applicant.
22. The Supplier reserves the right to withdraw any good or any ranges of goods from sale notwithstanding that such goods may be displayed in lists of goods available for purchase.
23. Prices quoted refer to the entire quotation and are subject to change if only part is ordered.
24. It is the Applicant's responsibility to check all specifications, selections, recommendations and engineering data, instructions including, inter alia, particulars of weight and dimensions ('specifications') submitted by the Applicant to the Supplier. Any deviation or variance by the Supplier from the specifications does not vitiate any contractual agreement entered into by the parties nor gives rise to any claim, action or liability resulting from any variance or by reason of any deviation from the specifications as against the Supplier. The provisions of this clause shall not apply insofar as their applications is prevented by the Competition and Consumer Act 2010 or any other State or Territory laws.

### **Substitution**

27. While description of the goods and brochures accompanying any quotations are as accurate as possible, the Supplier reserves the right to supply the goods with such modifications and specifications at the Supplier's discretion.

### **Performance**

28. Any performance figures or other data given by the Supplier are estimates only. The Supplier is under no liability for damages for failure of the goods to attain such figures unless specifically guaranteed by the Supplier in writing. Any such written guarantees are subject to the recognised tolerances applicable to such figures. It is acknowledged and recognized by the Applicant that any guarantee given by the Supplier is subject to the correct installation of the goods and any specifications are "as measured" within the test environment of the Supplier. Furthermore, the Applicant (or its Employee or Agents) is entitled to view the performance of the goods at the Supplier's premises. A failure to inspect the goods in this regard will disentitle the Applicant from making any future claim about the specifications of the goods. Any inspection by the Applicant will be taken as being acceptance by it of the goods unless otherwise immediately advised in writing to the Supplier.

### **Purpose of credit**

29. The Applicant acknowledges and agrees that the credit to be provided to the Applicant by the Supplier is to be applied wholly or predominantly for commercial purposes.

### **Formation of contract**

30. Quotations made by the Supplier will not be construed as an offer or obligation to supply in accordance with the quotation. The Supplier reserves the right to accept or reject, at its discretion, any offer to purchase received by it. Only written acceptance by the Supplier of the Applicant's offer will complete a contract.
31. Placement of an order, either verbally or in writing, will imply acceptance of the Supplier's offer and of these terms and conditions.
32. For the sake of clarity the Supplier rejects any proposed terms and conditions proposed by the Applicant (however described) unless such terms and conditions are accepted in writing by the Supplier.

### **Retention of title**

33. Whilst the Applicant has not paid for the goods supplied in full at any time, the Applicant agrees that property and title in the goods will not pass to the Applicant and the Supplier retains the legal and equitable title in those goods supplied and not yet sold until payment in full has been received by the Supplier.
34. Until payment in full has been made to the Supplier, the Applicant will hold the goods in a fiduciary capacity for the Supplier and agrees to store the goods in such a manner that they can be identified as the property of the Supplier.
35. The Applicant will be entitled to sell the goods in the ordinary course of its business, but until full payment for the goods has been made to the Supplier, the Applicant will sell as agent and bailee for the Supplier and the proceeds of sale of the goods will be held by the Applicant on trust for the Supplier absolutely.
36. The Applicant's indebtedness to the Supplier, whether in full or in part, will not be discharged by the operation of clause 34 unless and until the funds held on trust are remitted to the Supplier.
37. The Applicant agrees that whilst property and title in the goods remains with the Supplier, the Supplier has the right, with or without prior notice to the Applicant, to enter upon any premises occupied by the Applicant (or any receiver, receiver and manager, administrator, liquidator or trustee in bankruptcy of the Applicant) to inspect the goods of the Supplier and to repossess the goods which may be in the Applicant's possession, custody or control when payment is overdue.
38. The Applicant will be responsible for the Supplier's costs and expenses in exercising its rights under clause 36. Where the Supplier exercises any power to enter the premises, that entry will not give rise to any action of trespass or similar action on the part of the Applicant against the Supplier, its servants or agents.
39. The Applicant agrees that where the goods have been retaken into the possession of the Supplier, the Supplier has the absolute right to sell or deal with such goods.
40. For the avoidance of doubt, the Supplier's interest constitutes a 'purchase money security interest' pursuant to the *Personal Property Securities Act 2009*.

## Warranty

41. The Supplier's liability for goods manufactured by it is limited to making good any defects by repairing the defects or at the Supplier's option by replacement, within a period not exceeding eighteen(18) calendar months after the goods have been dispatched or 12 calendar months after installation (whichever is the earlier period) so long as:
  - (a) defects have arisen solely from faulty materials or workmanship;
  - (b) the goods have been subject to maltreatment, inattention, interference or adverse site conditions;
  - (c) additives of any kind used by the Applicant are manufactured by or approved by the Supplier;
  - (d) the goods have been correctly installed and operated in accordance with the Supplier's recommendations.; and
  - (e) the defective goods are promptly returned free of cost to the Supplier.
42. If the goods are not manufactured by the Supplier the guarantee of the manufacturer of those goods is accepted by the Applicant and is the only guarantee given to the Applicant in respect of the goods. The Supplier agrees to assign to the Applicant on written request made by the Applicant the benefit of any warranty or entitlement to the goods that the manufacturer has granted to the Supplier under any contract or by law.
43. The Supplier is not liable for and the Applicant releases the Supplier from any claims in respect of faulty or defective design or specification of any goods.
44. Except as provided in these conditions, all express and implied warranties, guarantees and conditions under statute or general law as to merchantability, description, quality, suitability or fitness of the goods for any purpose or as to design, assembly, installation, materials or workmanship or otherwise are expressly excluded. The Supplier is not liable for physical or financial injury, loss or damage or for consequential loss or damage of any kind arising out of the supply, layout, assembly, installation or operation of the goods or arising out of the Supplier's negligence or in any way whatsoever.
45. The Supplier makes no representation or warranty to the Applicant, other than those imposed by the law and incapable of exclusion, express or implied, as to the suitability of the goods, or any other component part of the goods supplied, for any purpose whatsoever.
46. It is expressly acknowledged by the Applicant that the Supplier has no way of knowing the purpose intended by the Applicant for the purchased goods.
47. The Applicant expressly acknowledges that any representations made by the Supplier, either in writing or orally, were not relied upon by the Applicant in its decision to purchase and use the goods.
48. It is agreed that the Applicant will abide by the recommendations of the Supplier as to installation of the goods. It is acknowledged that failure to do so may result in the warranty being void.
49. The Supplier's liability for a breach of a condition or warranty implied by the Competition and Consumer Act 2010 is limited to:
  - (a) in the case of goods, any one or more of the following:
    - (i) the replacement of the goods or the supply of equivalent goods;
    - (ii) the repair of the goods;
    - (iii) the payment of the cost of replacing the goods or of acquiring equivalent goods; or
    - (iv) the payment of the cost of having the goods repaired; or
  - (b) in the case of services:
    - (i) the supplying of the services again; or
    - (ii) the payment of the cost of having the services supplied again.
50. The Supplier's liability under s 274 of the Competition and Consumer Act 2010 is expressly limited to a liability to pay to the Applicant an amount equal to:
  - (a) the cost of replacing the goods;
  - (b) the cost of obtaining equivalent goods; or
  - (c) the cost of having the goods repaired, whichever is the lowest amount.

Please see Operating Manual for explanation and conditions of warranty.

51. Nothing in this agreement shall be read or applied so as to purport to exclude, restrict or modify or have the effect of excluding, restricting or modifying the application in relation to the supply of any goods and/or services pursuant to this agreement of all or any of the provisions of the Competition and Consumer Act 2010 or any relevant State or Federal Legislation which by law cannot be excluded, restricted or modified.

## Cancellation of terms of credit

52. The Supplier reserves the right to withdraw credit at any time, whether the Applicant is in default under the terms of this agreement or not.
53. Upon cancellation (with or without) notice all liabilities incurred by the Applicant become immediately due and payable to the Supplier.

## Indemnity

54. The Applicant agrees to indemnify the Supplier and keep the Supplier indemnified against any claim arising in connection with this agreement. This indemnity includes, but is not limited to, any legal fees and expenses the Supplier incurs in order to enforce its rights, on a full indemnity basis.

## Provision of further information

55. The Applicant undertakes to comply with any request by the Supplier to provide further information for the purpose of assessing the Applicant's creditworthiness, including an updated credit application.

## Corporations

56. If the Applicant is a corporation, the Applicant warrants that all of its directors have signed this agreement and that all of its directors will enter into a guarantee and indemnity with the Supplier in relation to the Applicant's obligations to the Supplier.

## Insolvency

57. If the Applicant becomes insolvent, the Applicant remains liable under this agreement for payment of all liabilities incurred hereunder. The Applicant remains liable under this agreement even if the Supplier receives a dividend or payment as a result of the Applicant being insolvent.

## Waiver

58. A waiver of any provision or breach of this agreement by the Supplier must be made by an authorised officer of the Supplier in writing. A waiver of any provision or breach of this agreement by the Applicant must be made by the Applicant's authorised officer in writing.
59. Until ownership of the goods passes, the Applicant waives its rights it would otherwise have under the PPSA:
  - (a) under section 95 to receive notice of intention to remove an accession;
  - (b) under section 118 to receive notice that the Supplier intends to enforce its security interest in accordance with land law;
  - (c) under section 121(4) to receive a notice of enforcement action against liquid assets;
  - (d) under section 129 to receive a notice of disposal of goods by the Supplier purchasing the goods;
  - (e) under section 130 to receive a notice to dispose of goods;
  - (f) under section 132(2) to receive a statement of account following disposal of goods;
  - (g) under section 132(4) to receive a statement of account if no disposal of goods for each 6 month period;
  - (h) under section 135 to receive notice of any proposal of the Supplier to retain goods;
  - (i) under section 137(2) to object to any proposal of the Supplier to retain or dispose of goods;
  - (j) under section 142 to redeem the goods;
  - (k) under section 143 to reinstate the security agreement; and
  - (l) under section 157(1) and 157(3) to receive a notice of any verification statement.

## Costs

60. The Applicant must pay all costs incurred by the Supplier relating to any default by the Applicant.
61. The Applicant will pay the Supplier's costs and disbursements incurred in pursuing any recovery action, or any other claim or remedy, against the Applicant, including debt recovery fees and legal costs on a full indemnity basis. Such costs and disbursements will be due and payable by the Applicant to the Supplier irrespective of whether pursuit of the recovery action, claim or remedy is successful.

## Taxes and duty

62. The Applicant must pay GST on any taxable supply made by the Supplier to the Applicant under this agreement.
63. If as a result of:
  - (a) any legislation becoming applicable to the subject matter of this agreement; or
  - (b) any changes in legislation or its interpretation by a court of competent jurisdiction or by any authority charged with its administration;the Supplier becomes liable to pay any tax, duty, excise or levy in respect of the amounts received from the Applicant, then the Applicant must pay the Supplier these additional amounts on demand.

## Interest rates

64. The interest rate on any outstanding debts due to the Supplier are that as determined by the Penalty Interest Act 1983.

## Service rates

65. All Service Rates are to be charged at those rates, and under those conditions, described in the Suppliers "Service Rates Terms & Conditions" as contained on its website, [www.sterlingpumps.com.au](http://www.sterlingpumps.com.au). This Policy forms part of these Terms & Conditions.

## Set-off

66. All payments required to be made by the Applicant to the Supplier under this agreement will be made free of any set-off, or counterclaim and without deduction or withholding.
67. Any amount due to the Supplier may be deducted from any monies which may be or may become payable to the Applicant by the Supplier.

## Miscellaneous

68. The Supplier is not liable for any loss caused to the Applicant by reason of strikes, lockouts, fires, riots, war, embargoes, civil commotions, acts of God or any other activity beyond the Supplier's control.
69. The Supplier is not liable, whether claims are made or not, for loss of profit, economic or financial loss, damages, consequential loss, loss of opportunity or benefit, loss of a right or any other indirect loss suffered by the Applicant.
70. The Applicant will, at the request of the Supplier, execute documents and do such further acts as may be required for the Supplier to register the security interest granted by the Applicant under the PPSA.
71. The Applicant agrees to accept service of any document required to be served, including any notice under this agreement or the PPSA or any originating process, by prepaid post at any address nominated in this application or any other address later notified to the Supplier by the Applicant.
72. The Applicant further agrees that where the Supplier has rights in addition to those under part 4 of the PPSA, those rights will continue to apply.
73. The Applicant irrevocably grants to the Supplier the right to enter upon the Applicant's property or premises, without notice, and without being in any way liable to the Applicant or to any third party, of the Supplier has cause to exercise any of their rights under sections 123 and/or 128 of the PPSA, and the Applicant shall indemnify the Supplier from any claims made by any third party as a result of such exercise.

### **Severance**

74. If any provision of this agreement is not enforceable in accordance with its terms, other provisions which are self-sustaining are, and continue to be, enforceable in accordance with their terms.
75. If any part of this agreement is invalid or unenforceable, that part is deleted and the remainder of the agreement remains effective.

### **Variation**

76. The Applicant agrees that these terms and conditions may be varied, added to, or amended by an authorised officer of the Supplier at any time by written notice to the Applicant.
77. Any proposed variation to these terms and conditions by the Applicant must be requested in writing. The Supplier may refuse any such request without providing reasons either orally or in writing.

### **Consent to register**

78. The Applicant hereby consents to the Supplier recording the details of this Agreement on the Personal Property Securities Register and agrees to do all things necessary and reasonably required by the Supplier to effect such registration.
79. The Applicant waives any right or entitlement to receive notice of the registration of any security interest(s) created by this instrument on the Personal Property Securities Register.

### **Entire agreement**

80. This agreement constitutes the entire agreement between the parties relating in any way to its subject matter. All previous negotiations, understandings, representations or warranties about the subject matter of this agreement are merged in this agreement and are of no further effect. No oral explanation or information provided by a party to another affects the meaning or interpretation of this agreement or constitutes any collateral agreement, warranty or understanding.

### **Privacy Act**

81. The Applicant agrees to the terms of the *Privacy Act 1988* authorisation contained in this agreement see Schedule 1.
82. The Applicant also warrants that it has read (or has had the opportunity to read) the Suppliers Privacy Act Policy as described and listed on its website, [www.sterlingpumps.com.au](http://www.sterlingpumps.com.au). This Policy forms part of these terms and conditions of this agreement.

### **Warranty**

83. The Applicant warrants that it has understood all of the information contained in this agreement.

**Sterling Pumps Pty Ltd**

ABN 57 108 899 305

14 Sharnet Circuit,

Pakenham VIC 3810

[www.sterlingpumps.com.au](http://www.sterlingpumps.com.au)



## **WARRANTY STATEMENT**

Sterling Pumps are guaranteed to be free of defects in material and workmanship for a period of one (1) year from the date of installation or eighteen (18) months from the date of manufacture, whichever is less, and the product has been properly used and cared for. Should any Sterling Pump or parts prove defective within the warranty period, the pump or parts (at our option) will be repaired or replaced, F.O.B. our factory, without charge, provided the defective pump or parts are returned transportation charges prepaid. No allowances will be made for labour, transportation, or other charges incurred in the replacement or repair of defective parts by customer. We will not be responsible for labour charges, loss, or damage caused by defective parts.

The warranty does not apply when damage is caused by sand or abrasive materials pumped with the water, corrosion due to acid waters, careless handling, misapplication, improper installation, or operation.

It is agreed that the user will abide by the recommendations of STERLING PUMPS PTY LTD as to the installation of the pump. The pump must be installed by suitably qualified personnel. A failure to do so may result in this Warranty being void.

Other equipment and/or accessories not manufactured by STERLING PUMPS PTY LTD, but furnished with Sterling Pumps, shall be subject to the warranty as provided by the manufacturer of said equipment and/or accessories. STERLING PUMPS PTY LTD will not be responsible for labour charges, mileage charges, loss or consequential damage of any kind or characteristic caused by defective parts, or for other charges incurred in the replacement or repair of defective parts by Purchaser.

This warranty is a **LIMITED** warranty. Anything in the warranty notwithstanding, **IMPLIED WARRANTIES FOR PARTICULAR PURPOSE AND MERCHANTABILITY SHALL BE LIMITED TO THE DURATION OF THE EXPRESS WARRANTY. MANUFACTURER EXPRESSLY DISCLAIMS AND EXCLUDES ANY LIABILITY OF CONSEQUENTIAL OR INCIDENTAL DAMAGES FOR BREACH OF ANY EXPRESS OR IMPLIED WARRANTY.**

## TYPES of FAILURES that are NOT WARRANTY\*

<b>For electric motors, submersible and surface mounted:</b>
Incorrect voltage; high voltage, low voltage
Voltage surges, power surges from grid power or a generator
Lightning strikes or surges from lightning
Incorrect cooling flow/velocity
Excessive starting and stopping
Incorrect water flow over the submersible motor leading to overheating
Hot water over motor size rated temperature
Corrosion of motor from compounds in the water
Corrosion of the motor from stray DC current/voltages/electrolysis
Top feeding, cascading bores for submersible motors
Incorrect or no 3 phase overload protection
Too small a drop cable, starving the motor of voltage
Incorrect or poor quality cable splice from the motor to the drop cable
Damaged or cut submersible motor lead and/or drop cable
Using orange circular cable as submersible drop cable
Incorrect kW start panel to kW motor
Incorrect wiring of motor leads into control panel
Incorrect ramp times on Soft Starters and Variable Frequency Drives
Damaged mechanical seals from grit or sand
Flooding of surface mounted motors
Water inside surface mounted motors
Worn splines on submersible motors
Back spinning of submersible motor causing bearing wear
Broken shaft
Encrustation of motor shell leading to overheating of submersible motor

<b>For pumps:</b>
Water hammer, water shocks and resultant damage
Cavitation
Dry running, no water in the bore, tank, wet well or pipeline
Incorrect placement of the bore pump into the screens
Side loading of bearings, incorrect attachment/alignment of pump to motor
Broken shaft
Build up of sand – lime -iron oxide - calcium
Block/obstructed inlet strainer
No oil in Oil Lubricated Line Shaft pump column
Corrosion of pump from compounds in the water

\*The above is not a complete list, offered as a guide only. These types of failures are caused by/from the site, installer or operator relating to incorrect installation and/or operation and/or site condition.

Unauthorised dismantling of product within warranty period
--

Refer to Sterling Pumps warranty for more details.





## CONSUMER WARRANTY – AUSTRALIA only

1

Nothing in this warranty is intended to exclude, restrict or modify any rights that a party may have under Commonwealth and/or State consumer protection legislation that cannot be excluded, restricted or modified. The benefits of this warranty are in addition to other rights and remedies that the Purchaser has under a law in relation to the goods.

2

Our goods come with guarantees that cannot be excluded under the Australian Consumer Law. You are entitled to a replacement or refund for a major failure and for compensation for any other loss or damage. You are also entitled to have the goods repaired or replaced if the goods fail to be of acceptable quality and the failure does not amount to a major failure.

3

To the extent permitted by law, where the Purchaser acquires a product as a 'consumer' within the meaning of the Australia Consumer Law, but where the product or is of a type that is not of a kind ordinary acquired for personal, domestic or household use or consumption, Sterling Pumps Pty Ltd's liability is limited to:

- (a) The cost of replacing the goods or
- (b) The cost of obtaining equivalent goods or
- (c) The cost of having the goods repaired

which-ever is the lowest amount.

4

Where the Purchaser has a remedy against Sterling Pumps under Part 5-4 of the Australian Consumer Law, Sterling Pumps liability will be determined in accordance with Part 5-4 of the Australian Consumer Law. In all other cases the following provisions apply:

- (a) Sterling Pumps guarantee its products will be free from defects in workmanship and materials, will perform consistently with samples previously supplied to the Purchaser and will conform to applicable specifications published by Sterling Pumps or otherwise agreed to between the Purchaser and Sterling Pumps for a period of no less than 1 year (12 months) from date of installation or 18 months from the date of manufacture, whichever occurs first.
- (b) Any Sterling Pumps product found to be defective within the Warranty period shall be repaired or replaced by Sterling Pumps at Sterling Pumps sole election. No allegedly defective products shall be returned to Sterling Pumps however, without Sterling Pumps prior written authorisation and delivery instruction.
- (c) Sterling Pumps makes no warranty, expressed or implied, with respect to the products acquired by the Purchaser except as set forth in this warranty. Sterling Pumps shall not be liable for any Purchase's incidental expenses (including costs of inspection, testing, storage or transportation), any other charges, costs, or expenses, or consequential damages incurred by Purchaser or by any third party (including lost profits, liability to third parties' requirements) regardless of whether Sterling Pumps is shown to be at fault and regardless of whether there is shown to have been a defect in materials or workmanship, negligence in manufacture or design, or failure to warn. Notwithstanding paragraph 4(b) above, in the event that Sterling Pumps is liable in any way Sterling Pumps liability shall not exceed the amounts paid by the Purchaser for the products.



- (d) Sterling Pumps has the right to inspect any product returned under warranty to confirm that the product contains a defect in material or workmanship. If Sterling Pumps determines that the products is covered by warranty, Sterling Pumps shall have sole right to choose whether to repair or replace the defective equipment, parts or components.
- (e) The warranty does not apply to products damaged as an act of god, including lightning, normal wear and tear, normal maintenance services and parts used in connection with such services, installation and operation outside of installation, operational and maintenance literature, design limitations, or any other matters beyond the control of Sterling Pumps. Refer to our web site [www.sterlingpumps.com.au](http://www.sterlingpumps.com.au) for a list of site, installation, operational circumstances that are not covered by this warranty.
- (f) This warranty will immediately void if any of the following conditions are found:
- (i) Product is used for any purpose other than those for which it was designed and manufactured.
  - (ii) Product was not installed in accordance with any applicable codes, ordinances and industry best practice and/or installation operation and maintenance manuals, instructions or training provided by Sterling Pumps Pty Ltd.
  - (iii) Product was damaged as a result of negligence, abuse, accident, misapplication, tampering, alteration, improper installation, operation, maintenance or storage, unauthorised dismantling, nor to an operation in excess of recommended maximum operational settings or performance limitations as set forth in the product installation, operating and maintenance manuals.

5

All other liability of Sterling Pumps whether arising from negligence or otherwise, is expressly excluded.

6

For the avoidance of doubt, if after inspection of any product returned to it, sterling Pumps form the view that neither Part 5-4 of the Australian Consumer Law applies and is not covered by warranty, but nevertheless decides to offer a commercial replacement, this is not to be construed as an admission of liability and Sterling Pumps shall not under any circumstances be liable for any removal, reinstall costs or third party costs associated with our offer.

7

This warranty is offered by:

Sterling Pumps Pty Ltd

ABN 57 108 899 305

14 Sharnet Circuit, Pakenham, Victoria, 3810

Telephone: 03 5941 3400

Email: [sales@sterlingpumps.com.au](mailto:sales@sterlingpumps.com.au)

To claim under this ACL consumer warranty:

Please submit in writing, by email or fax or letter,

- Your contact details: phone (fixed or mobile), email address if applicable
- The location of the product and installation.
- Product used for, brief explanation of your use.

- Product model
- Product serial number
- Date of purchase



- Purchased from – Sterling Pumps and contact phone (fixed or mobile) number or email address
- Copy of your Tax Invoice for the goods
- Date of installation or date of commissioning
- Installed by – Installers name and phone (fixed or mobile) number or email address
- Date of failure
- Brief explanation of what you have done to get the product working again: contacted selling dealer or installer?
- Any other information that you feel is relevant to your installation or the product failure.

End

Issued July 2017





**Sterling Pumps Pty Ltd**  
14 Sharnet Circuit, Pakenham, VIC, 3810  
P: 03 5941 3400 F: 03 5940 2645  
sales@sterlingpumps.com.au

**[www.sterlingpumps.com.au](http://www.sterlingpumps.com.au)**

